

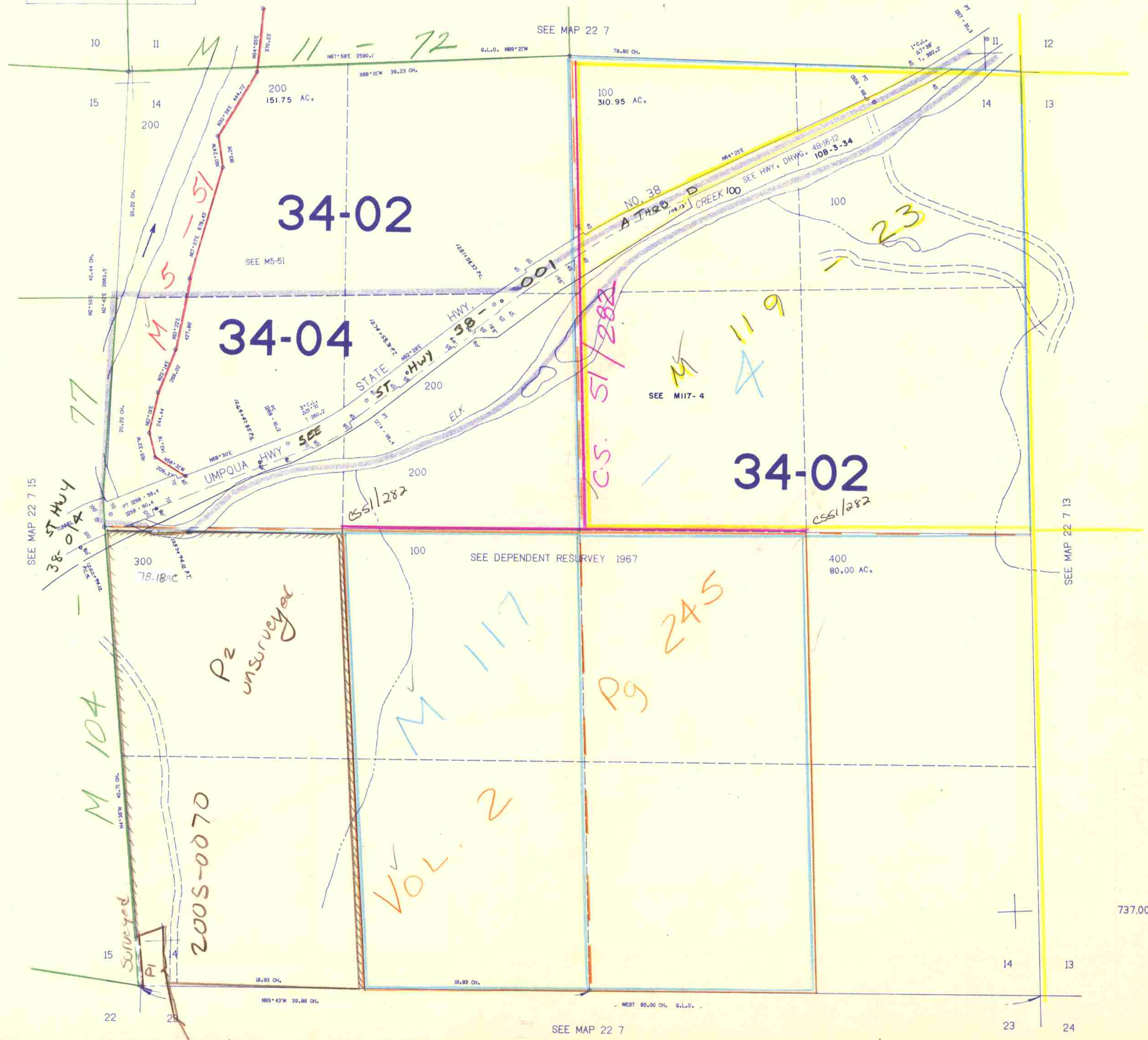
SECTION 14 T.22S. R.7W. W.M.
DOUGLAS COUNTY

REVISED ON
1-19-94

22 7 14

THIS MAP WAS PREPARED FOR
ASSESSMENT PURPOSE ONLY.

1"=400'



737,000

SEE MAP 22 7

1:210,000

22 7 14

JP 2/94