

SECTION 13 T.22S. R.7W. W.M.  
DOUGLAS COUNTY

22 7 13

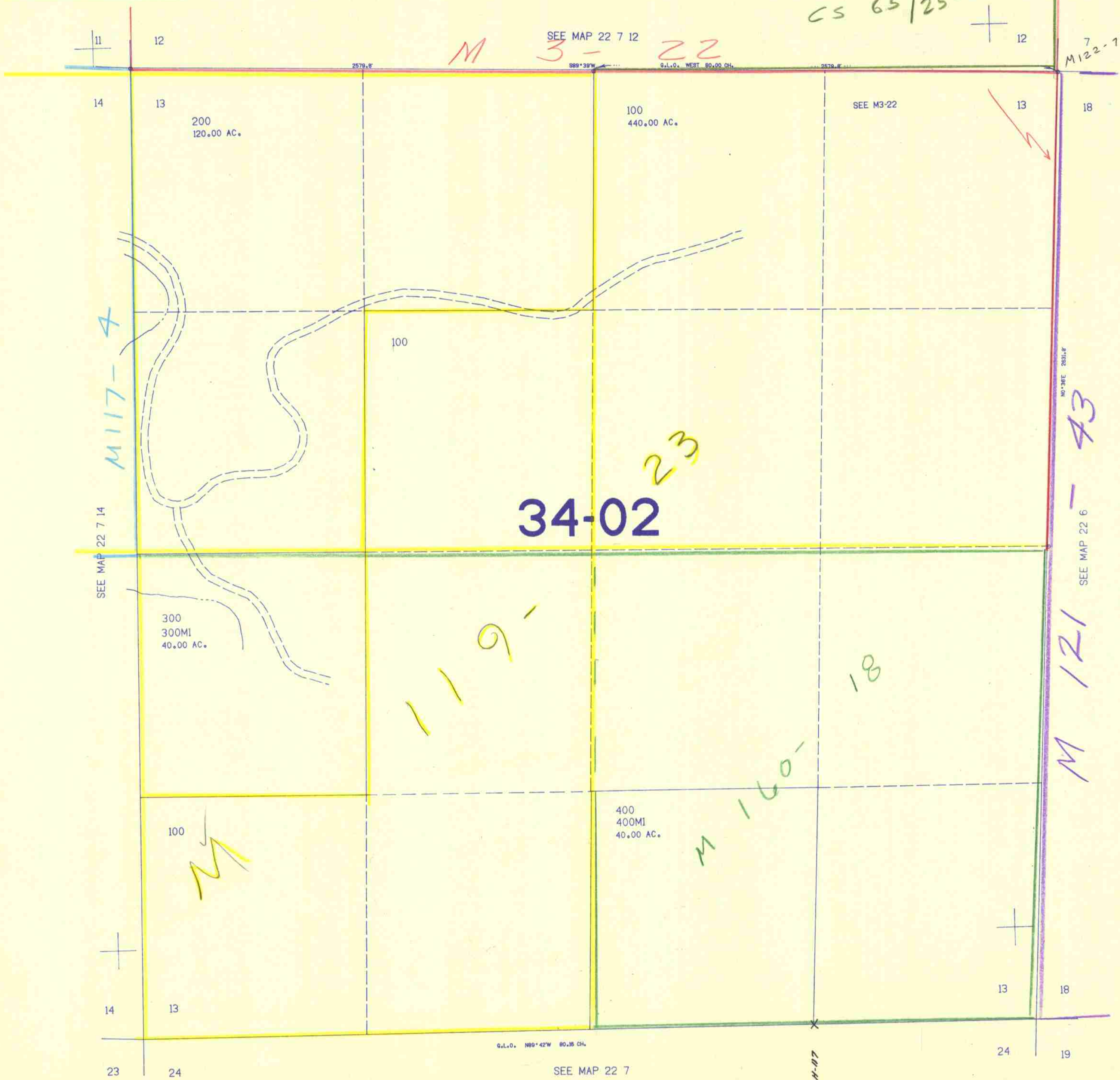
THIS MAP WAS PREPARED FOR  
ASSESSMENT PURPOSE ONLY.

1"=400'

CS 65/25-8

M 3-22

SEE MAP 22 7 12



SEE MAP 22 7 14

SEE MAP 22 6

G.L.O. N89°42'W 80.18 CH.

SEE MAP 22 7

See 11-17

1:215,000

22 7 13

8/83  
2/8