

SECTION 4 T.22S. R.7W. W.M.
DOUGLAS COUNTY

22 7 4

THIS MAP WAS PREPARED FOR
ASSESSMENT PURPOSE ONLY.

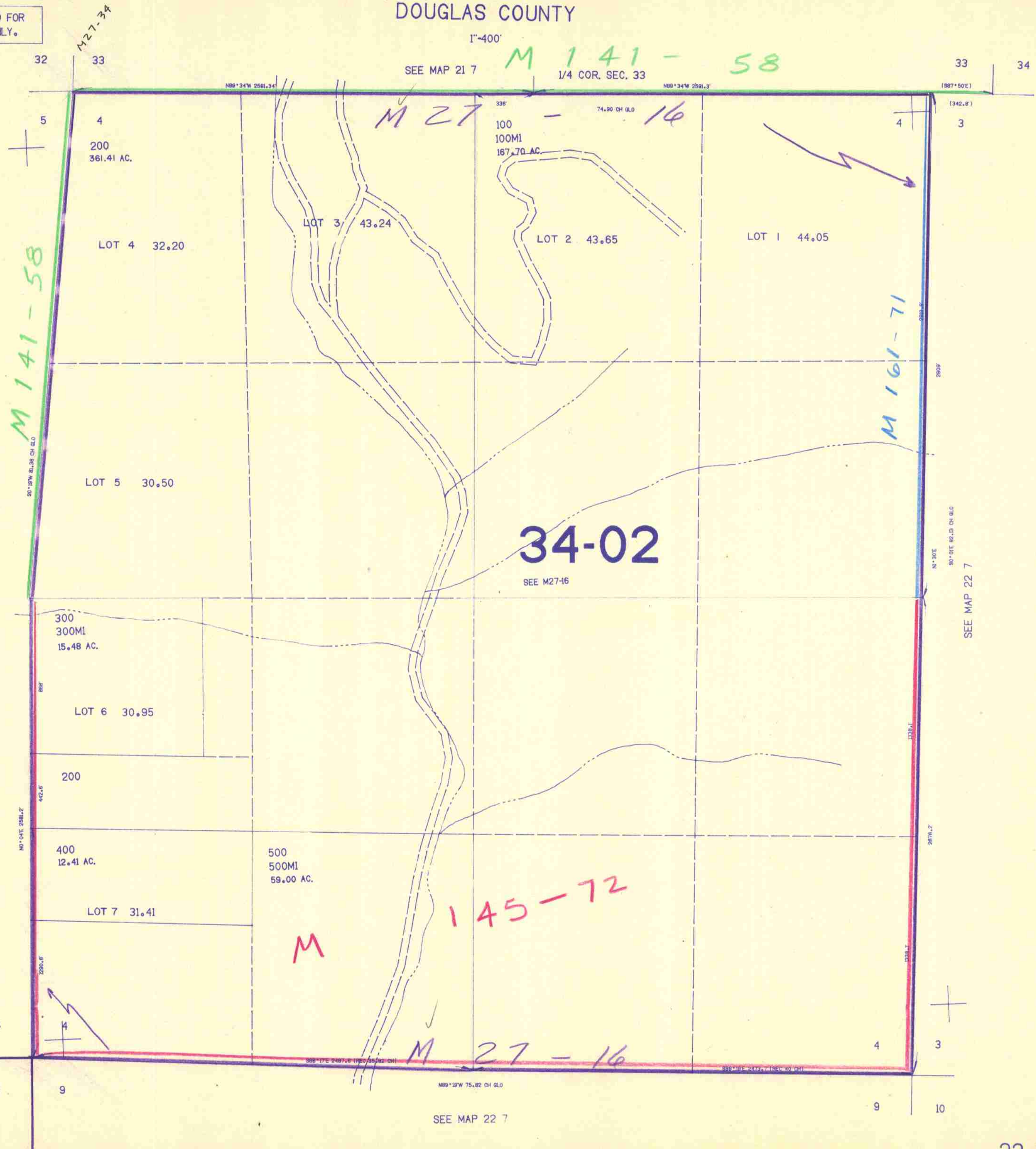
1"=400'

SEE MAP 21 7

M 141 - 58

1/4 COR. SEC. 33

33 34



SEE MAP 22 7

SEE MAP 22 7

SEE MAP 22 7

748,000

22 7 4

200,000

8/83