

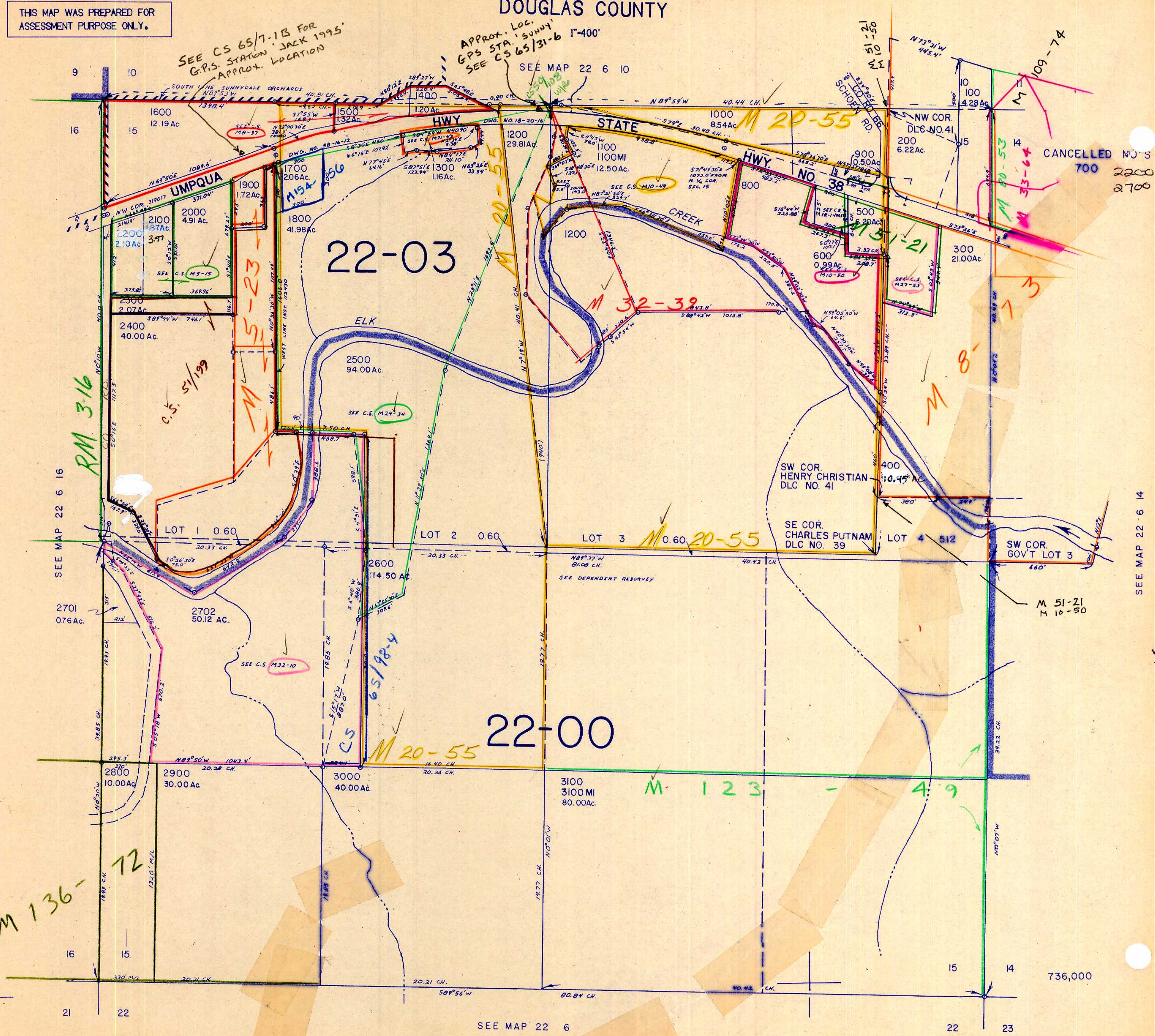
SECTION 15 T.22S. R.6W. W.M.
DOUGLAS COUNTY

THIS MAP WAS PREPARED FOR
ASSESSMENT PURPOSE ONLY.

SEE CS 65/7-1B FOR
G.P.S. STATION
APPROX. LOCATION

APPROX. LOC.
GPS STA. 'SUNNY'
SEE CS 65/31-6 1"-400"

SEE MAP 22 6 10



CANCELLED NO'S
700 2200
2700

M 136-72

22-00

22-03

SEE MAP 22 6

736,000

1,235,000