

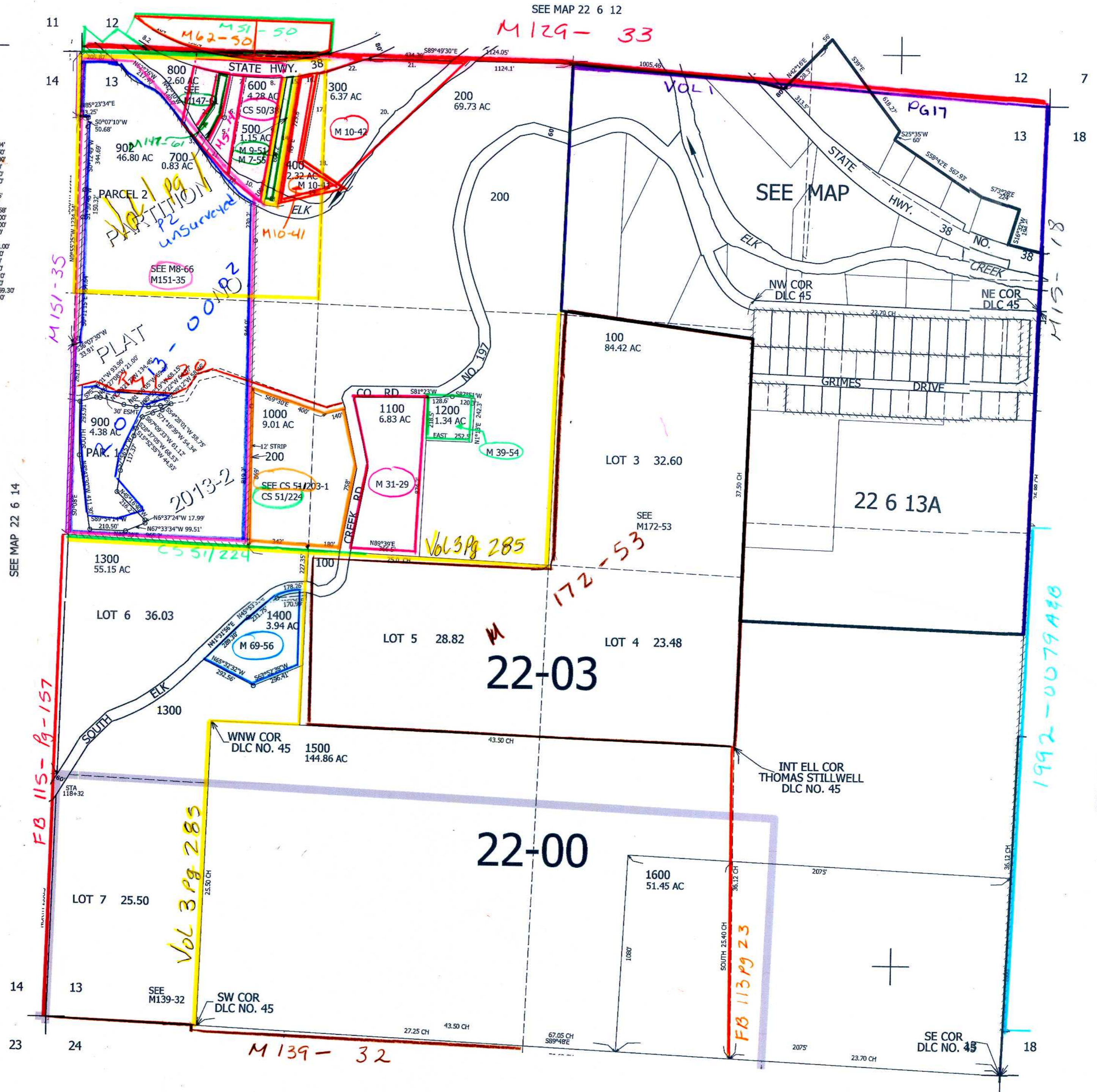
THIS MAP WAS PREPARED FOR ASSESSMENT PURPOSE ONLY.

SEC.13 T.22S. R.6W. W.M. DOUGLAS COUNTY 1" = 400'

REVISED ON 3-6-18

22 6 13 & INDEX

1. S10°56'W 197.34'
2. S30°30'W 181.50'
3. N32°15'W 362.00'
4. N52°15'W 92.40'
5. N22°55'E 211.20'
6. N10°48'E 245.00'
7. S85°30'E 91.23'
8. S87°59'E 215.06'
9. N9°01'E 709.20'
10. N50°07'W 240.58'
11. N51°21'W 177.00'
12. N53°30'W 355.00'
13. N82°06'W 69.90'
14. N96°E 659.60'
15. N81°46'30"E 73.00'
16. N78°17'E 103.30'
17. S9°04'W 475.30'
18. S57°25'E 304.60'
19. S74°46'W 411.20'
20. N41°50'E 959.50'
21. N89°49'39"W 559.30'
22. S72°30'W 275.30'



SEE MAP 22 6 14

FB 115-157

Vol 3 Pg 285

SEE MAP 22 6 24

4,167,000

SEE MAP 22 5 18B

SEE MAP 22 5 18C

CANCELLED NO. 901

736,000

22 6 13 & INDEX

JCW