

SECTION 3 T.22S. R.6W. W.M.
DOUGLAS COUNTY

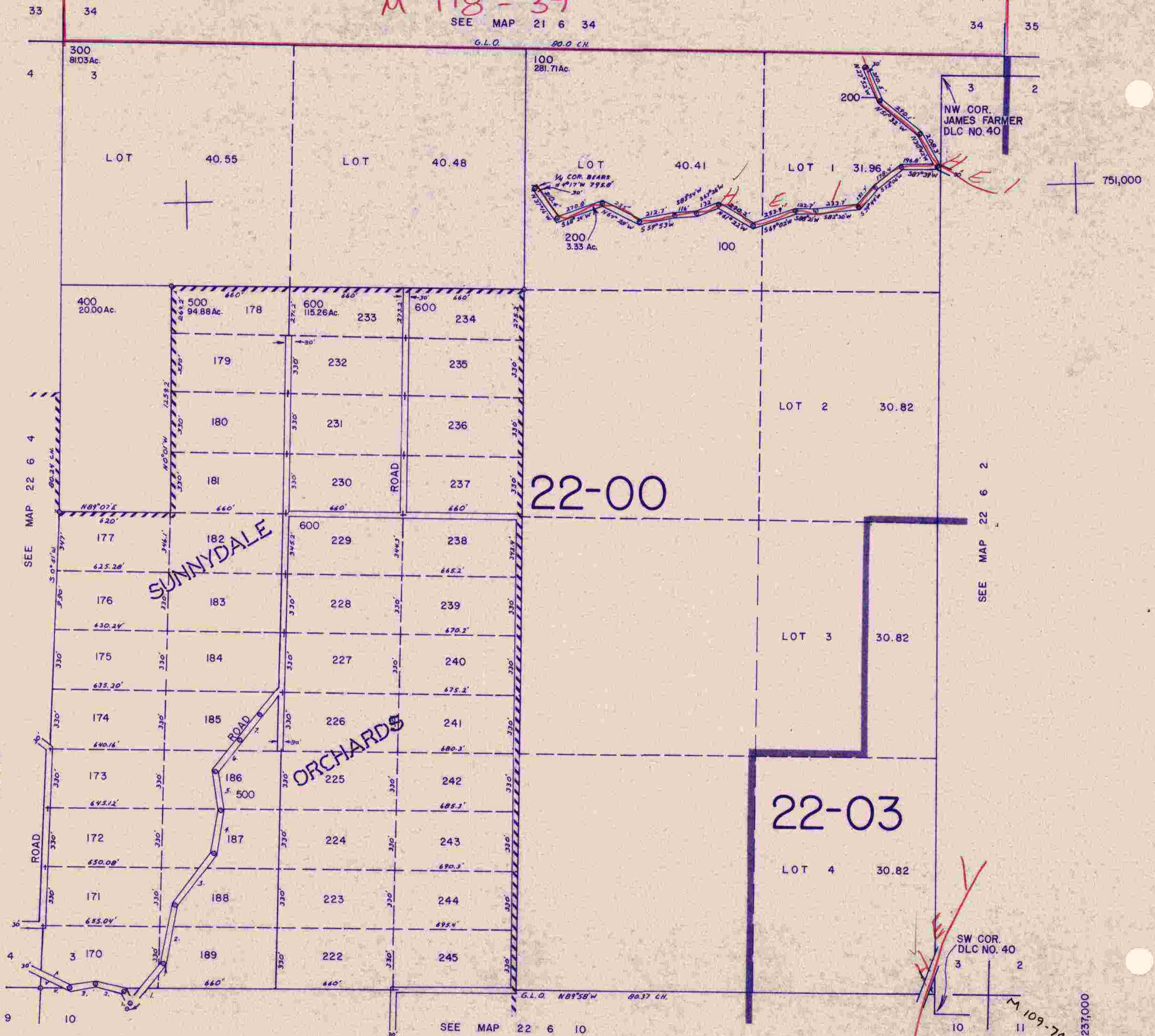
22 6 3

THIS MAP WAS PREPARED FOR
ASSESSMENT PURPOSE ONLY.

1" = 400'

M 118-39

SEE MAP 21 6 34



ROAD NO. 1

1. N 37°17'E	303.75'
2. N 11°42'E	340.00'
3. N 25°34'E	340.00'
4. N 8°44'E	330.00'
5. N 6°41'W	230.00'
6. N 38°42'E	433.83'
7. N 35°26'E	184.23'

ROAD NO. 2

1. N 28°16'W	75.0'
2. N 75°48'W	176.4'
3. S 70°09'W	195.0'
4. N 84°06'W	585.9'

SW COR. DLC NO. 40

M 109-74

1,237,000

22 6 3

8/83 BS