

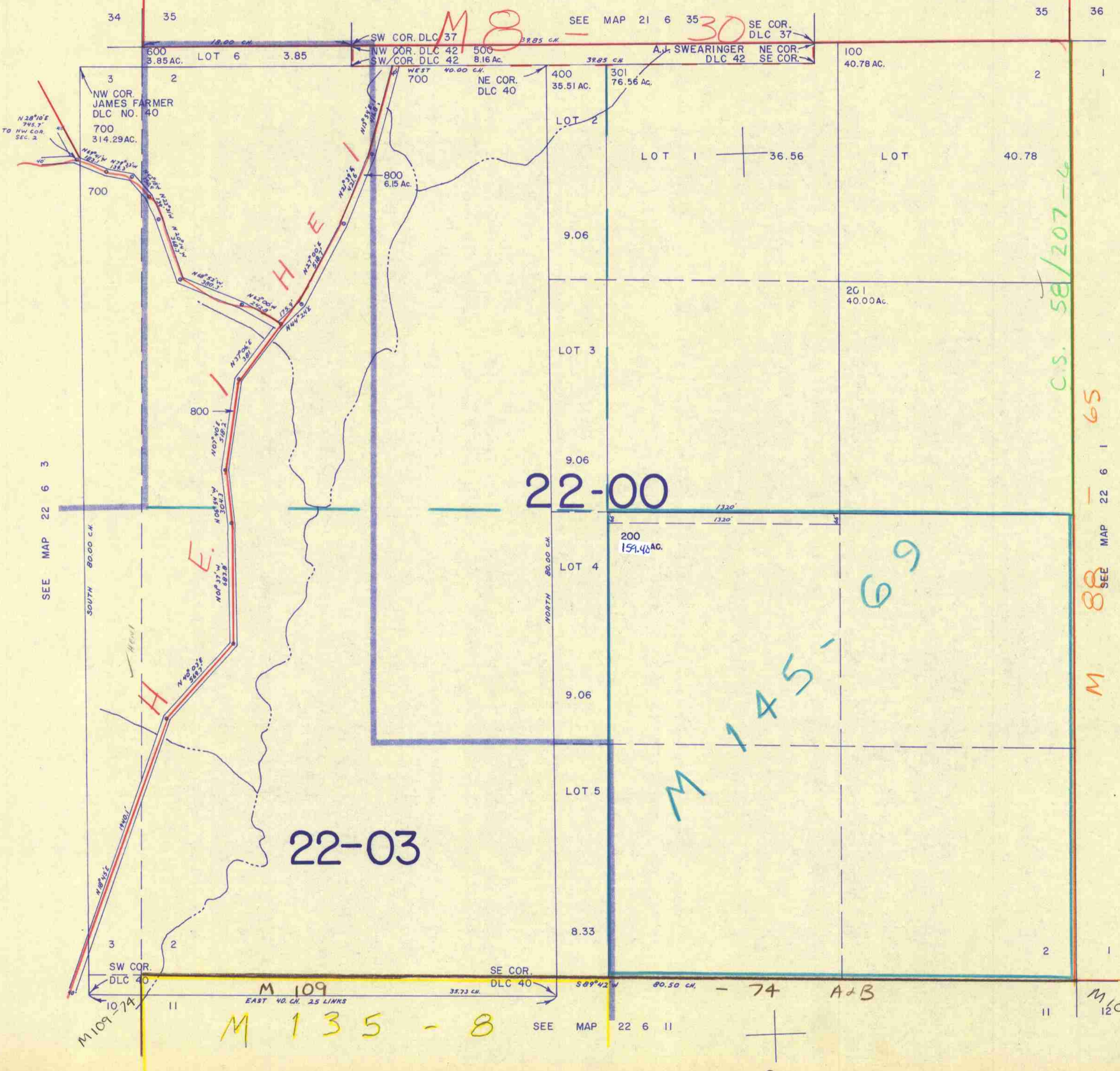
SECTION 2 T.22S. R.6W. W.M.
DOUGLAS COUNTY

REVISED ON
3-19-92

22 6 2

THIS MAP WAS PREPARED FOR
ASSESSMENT PURPOSE ONLY.

1"=400'



CANCELLED NO'S
300

c.s. 58/207-6

M 88
SEE MAP 22 6 1 65

M 145
69

M 135 - 8

22 6 2

3192
15

240,000