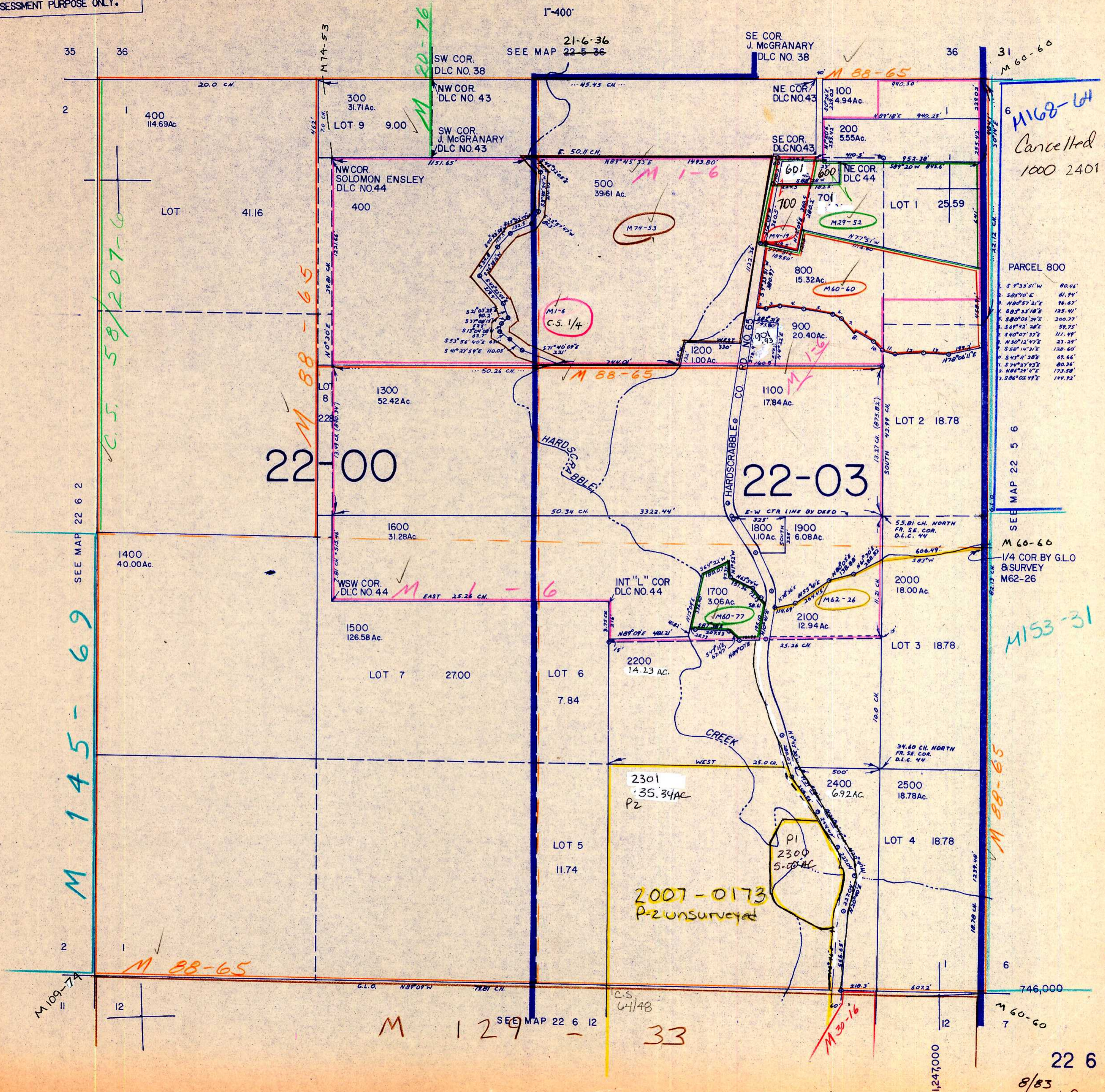


SECTION 1 T.22S. R.6W. W.M.
DOUGLAS COUNTY

REVISED
3-17-04

22 6 1

THIS MAP WAS PREPARED FOR
ASSESSMENT PURPOSE ONLY.



M 168-64
Cancelled Nos
1000 2401

PARCEL 800	
S 4°33'51\"	80.46'
S 50°10'0\"	41.94'
N 40°52'21\"	96.47'
S 80°35'18\"	125.41'
S 80°04'20\"	200.77'
S 84°42'28\"	59.75'
S 40°07'37\"	111.49'
N 30°12'47\"	23.24'
S 50°14'32\"	67.60'
S 43°11'28\"	80.36'
N 86°24'17\"	173.58'
S 306°05'19\"	144.92'

M 60-66
1/4 COR. BY G.L.O
8 SURVEY
M62-26

M 153-31

M 88-65

M 145-69

C.S. 58/207-6

M 129-33

22 6 1

8/83
BS