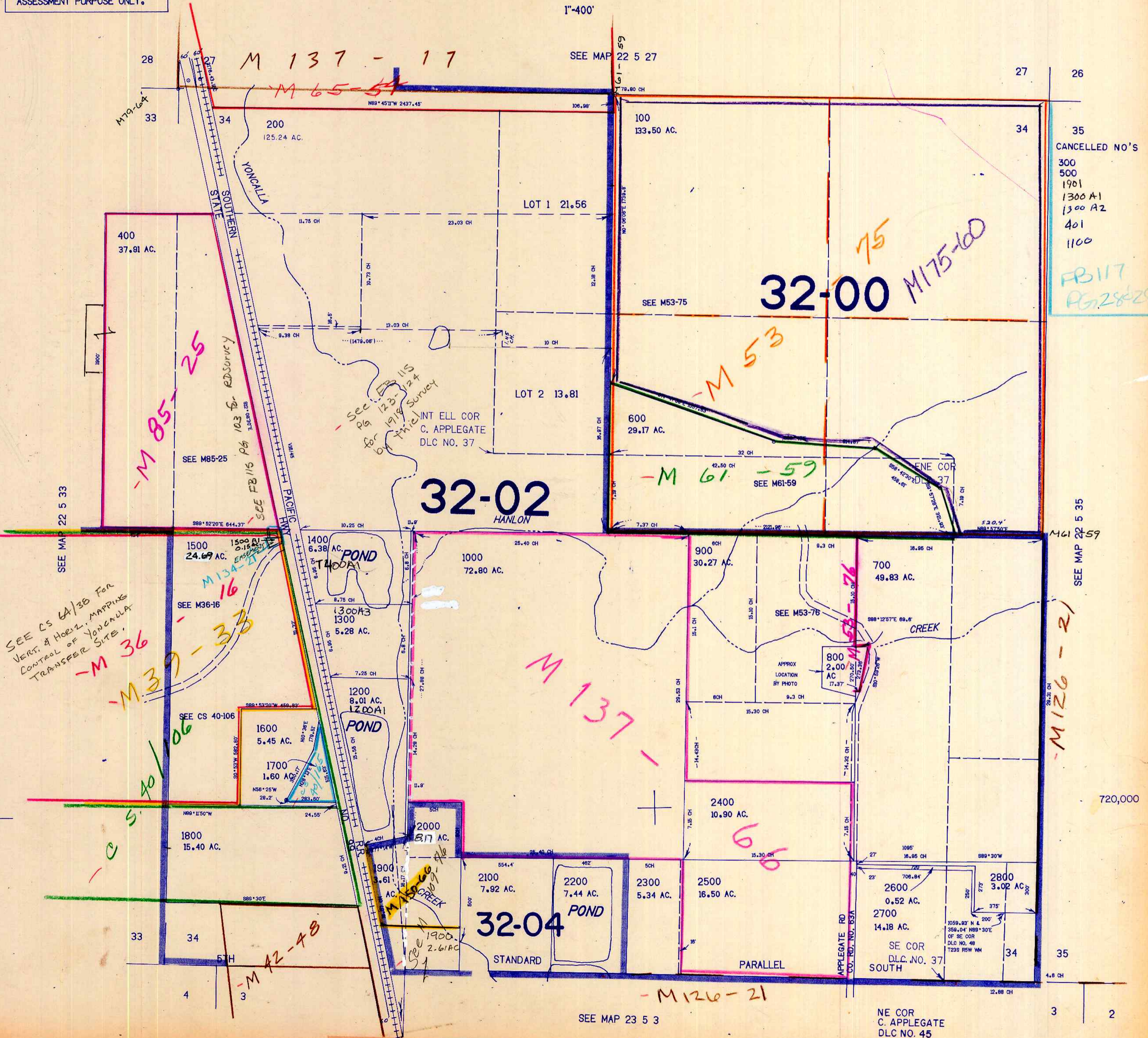


SECTION 34 T.22S. R.5W. W.M.
DOUGLAS COUNTY

22 5 34

THIS MAP WAS PREPARED FOR
ASSESSMENT PURPOSE ONLY.

1"=400'



CANCELLED NO'S
 300
 500
 1901
 1300 A1
 1300 A2
 401
 1100

FB 117
 PG 28-29

SEE CS 64/38 For
 VERT. & HORIZ. MAPPING
 CONTROL OF YONCALLA
 TRANSFER SITE.

See FB 115
 Pg 123-124
 for 1918 Survey
 of this Survey

INT ELL COR
 C. APPLGATE
 DLC NO. 37

APPROX
 LOCATION
 BY PHOTO

SE COR
 DLC. NO. 37
 SOUTH

NE COR
 C. APPLGATE
 DLC NO. 45

SEE MAP 23 5 3

SEE MAP 22 5 35

M 126-21

22 5 34

1265,000

1878