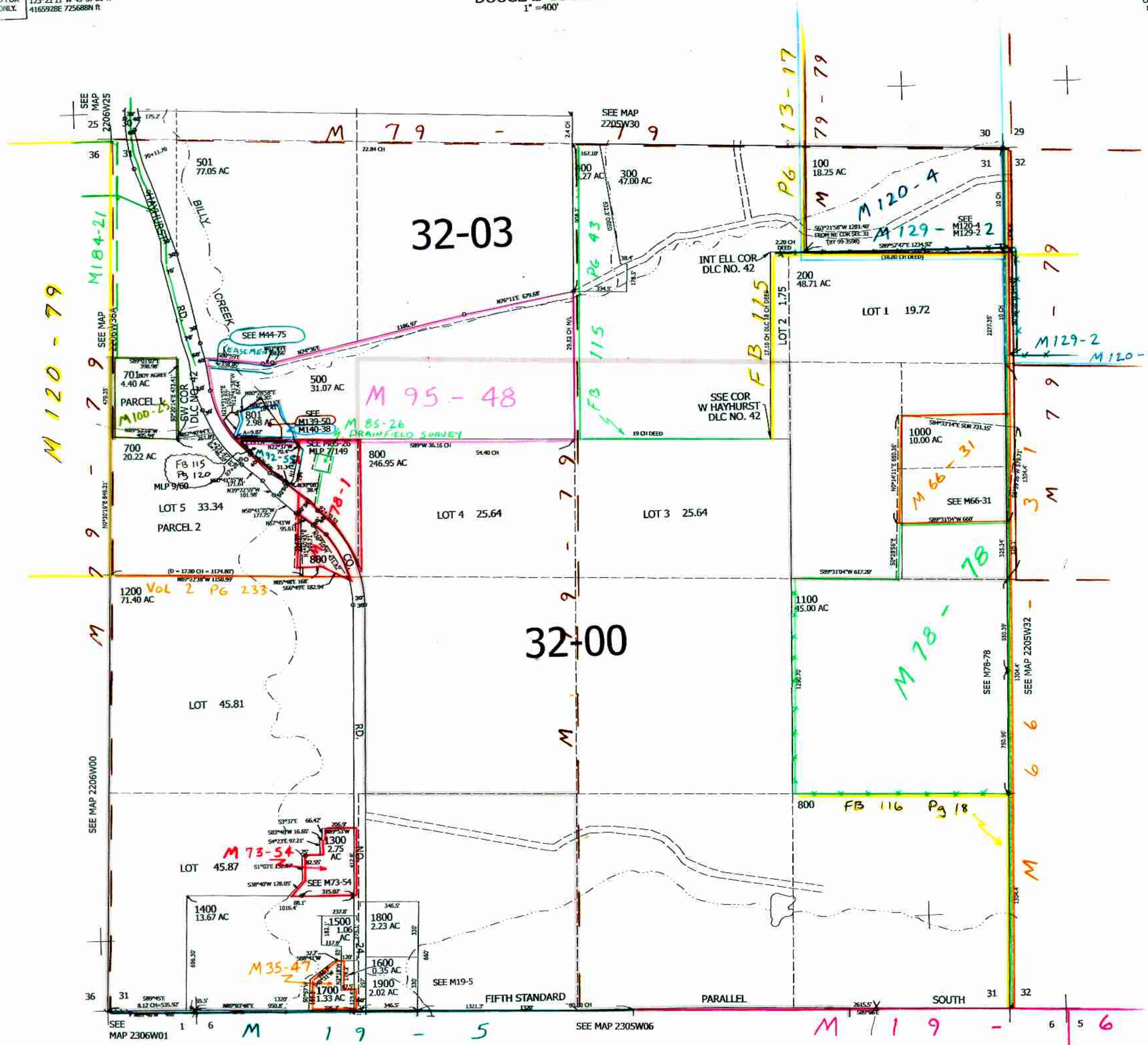


SEC.31 T.22S. R.05W. W.M.
DOUGLAS COUNTY
1" = 400'

THIS MAP WAS PREPARED FOR
ASSESSMENT PURPOSE ONLY.

Upper Left:
123°21'11"W 43°37'21"N
4165928E 725688N ft



E 1/4 NW 1/4
Sec 6 T 23-5
CS 65/104-14

Lower Right:
123°19'22"W 43°36'15"N
4173777E 718733N ft
8/22/10
220531