

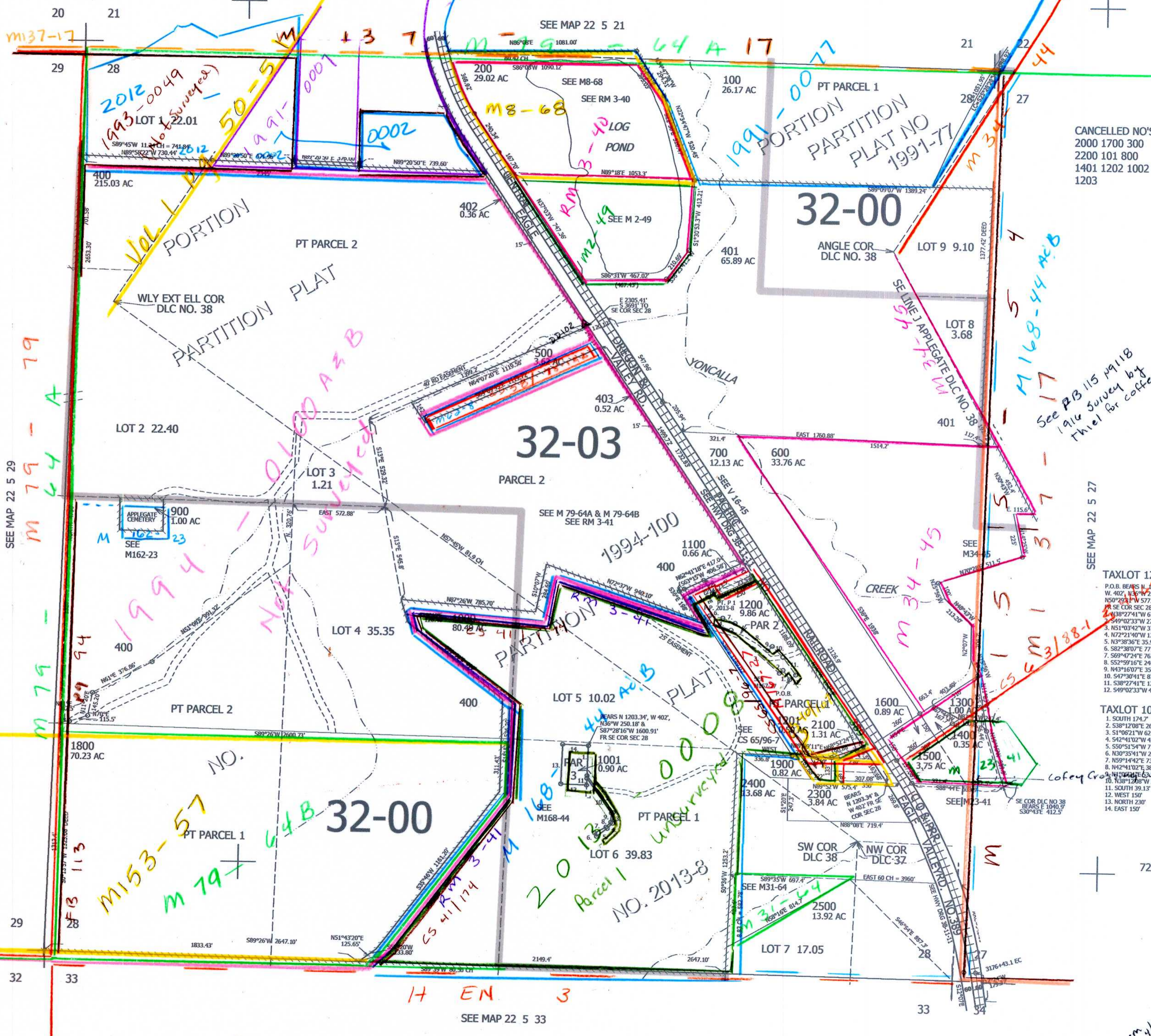
THIS MAP WAS PREPARED FOR ASSESSMENT PURPOSE ONLY.

SEC.28 T.22S. R.5W. W.M.
DOUGLAS COUNTY

REVISED ON
3-28-19

22 5 28

1" = 400'



CANCELLED NO'S
 2000 1700 300
 2200 101 800
 1401 1202 1002
 1203

See PB 115 P9118
 1916 Survey by
 Thiel for Coffey

TAXLOT 1200 3
 P.O.B. BEARS N 1203.34',
 W 402' 13.6" W 250.18' &
 N50°28'11"W 577.47'
 1. SE COR SEC 28
 2. S49°02'33"W 27.61'
 3. N51°03'42"W 376.56'
 4. N72°21'40"W 136.65'
 5. N3°38'36"E 35.93'
 6. S82°38'07"E 77.86'
 7. S69°47'24"E 76.98'
 8. S52°59'16"E 248.87'
 9. N43°16'07"E 35.68'
 10. S47°30'41"E 67.23'
 11. S38°27'41"E 128.28'
 12. S49°02'33"W 43.92'

TAXLOT 1001
 1. SOUTH 174.7'
 2. S38°12'08"E 263.32'
 3. S1°06'21"W 62.43'
 4. S42°41'02"W 42.25'
 5. S50°51'54"W 77.06'
 6. N30°35'41"W 22'
 7. N59°14'42"E 73.8'
 8. N42°41'02"E 38.79'
 9. N10°42'16"E 63.94'
 10. N38°12'08"W 247.05'
 11. SOUTH 39.13'
 12. WEST 150'
 13. NORTH 230'
 14. EAST 150'

725,000

H EN 3

SEE MAP 22 5 33

4,179,000

22 5 28

em-411
JCV