

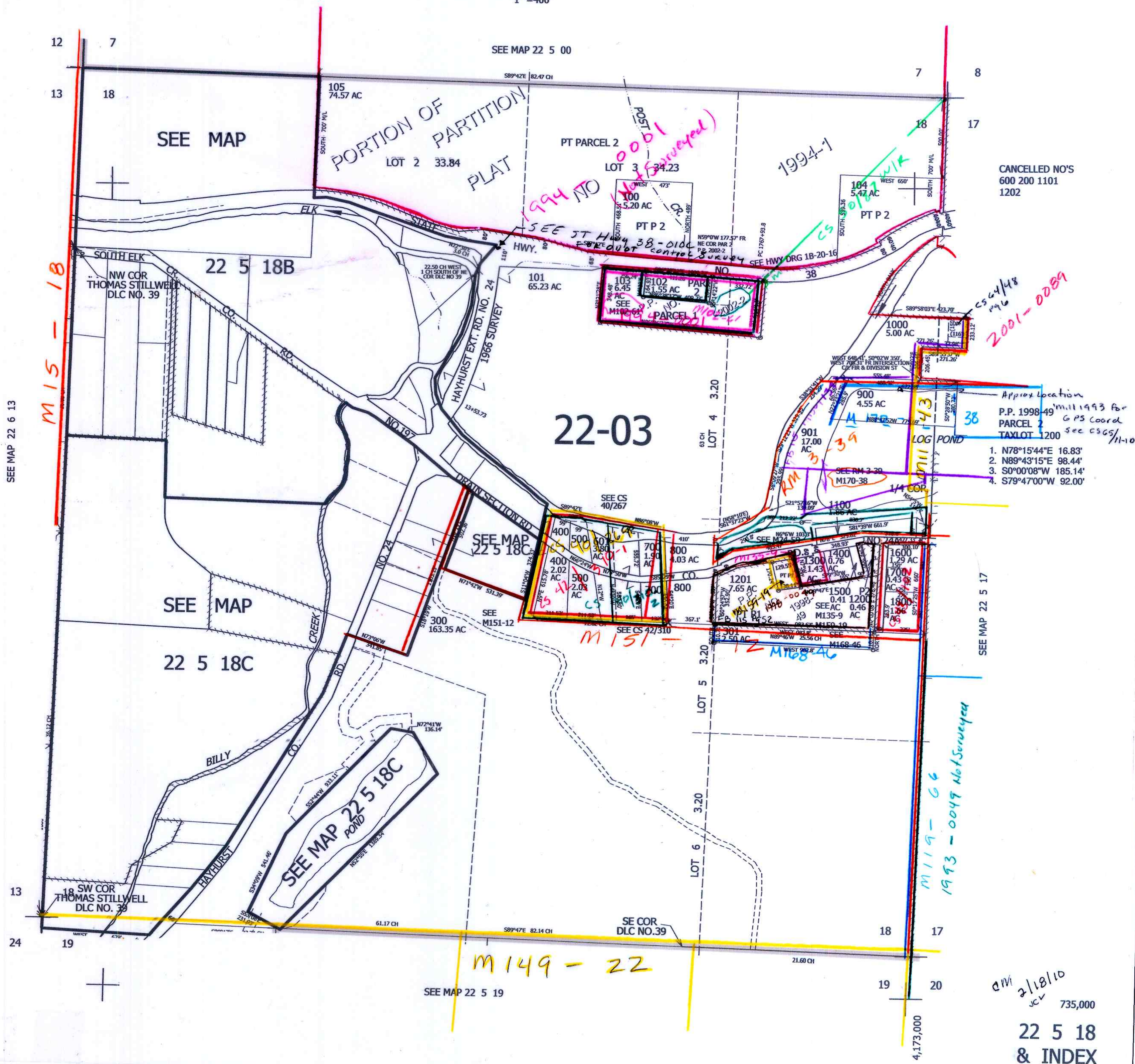
THIS MAP WAS PREPARED FOR ASSESSMENT PURPOSE ONLY.

SEC.18 T.22S. R.5W. W.M. DOUGLAS COUNTY

1" = 400'

REVISED ON 8-5-19

22 5 18 & INDEX



CANCELLED NO'S 600 200 1101 1202

2001-0089

Approx Location
 P.P. 1998-49
 PARCEL 2
 TAXLOT 1200
 See CS 6/11-10

1. N78°15'44"E 16.83'
2. N89°43'15"E 98.44'
3. S0°00'08"W 185.14'
4. S79°47'00"W 92.00'

SEE MAP 22 5 17

M119-66
1993-0049 Not Surveyed

M149-22

SEE MAP 22 5 19

2/18/10
JCW 735,000

22 5 18 & INDEX