

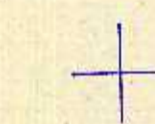
NW1/4 SE1/4 SEC. 17 T.22S. R.5W. W.M.
DOUGLAS COUNTY

22 5 17DB
DRAIN

THIS MAP WAS PREPARED FOR
ASSESSMENT PURPOSE ONLY.

738.000

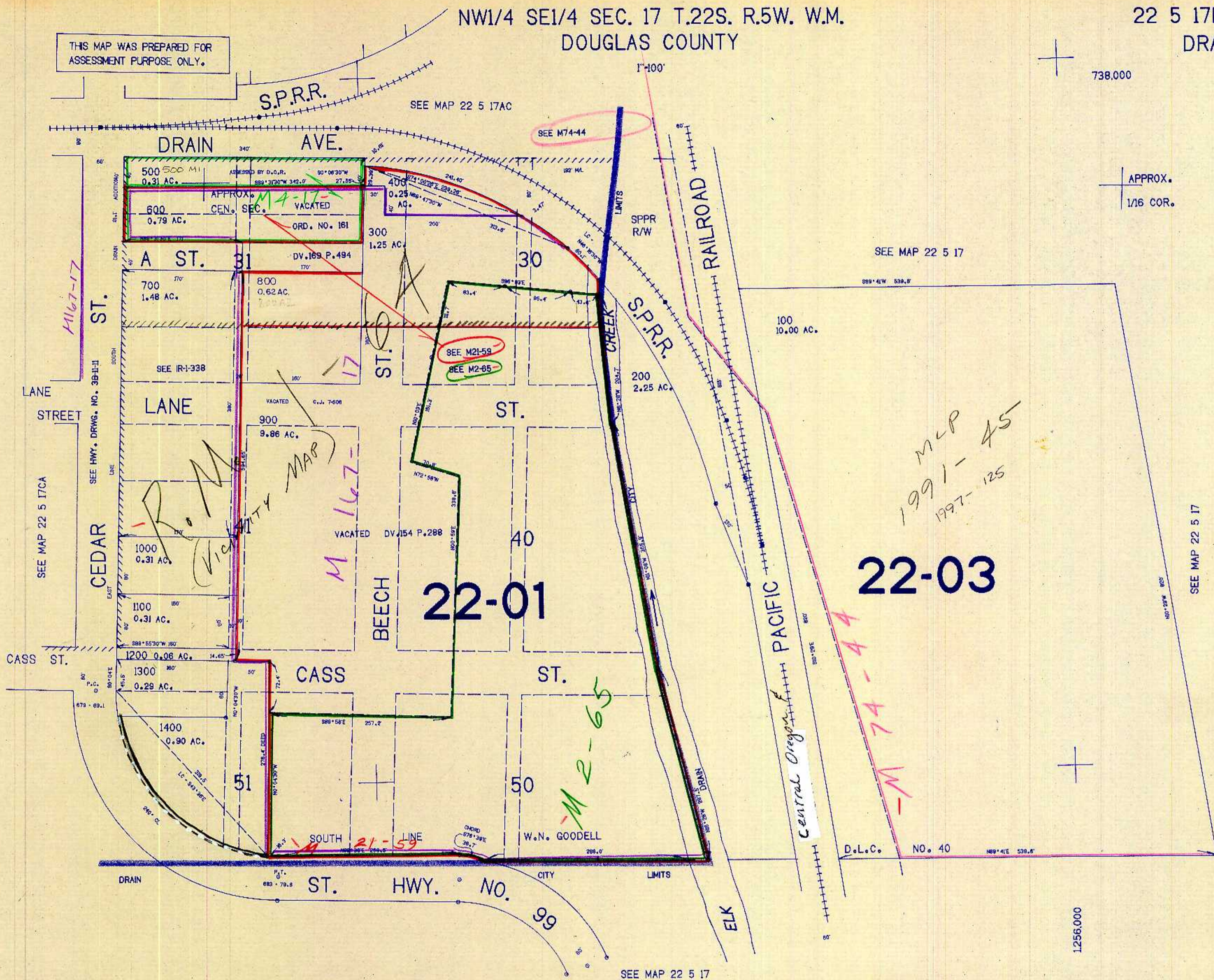
APPROX.
1/16 COR.



APPROX.
1/16 COR.

22 5 17DB
DRAIN

8/83/88



22-01

22-03

D.L.C. NO. 40

SEE MAP 22 5 17

SEE MAP 22 5 17

SEE MAP 22 5 17CA

SEE HWY. DRWG. NO. 3B-11-I

SEE MAP 22 5 17AC

SEE MAP 22 5 17

1.256.000