

THIS MAP WAS PREPARED FOR ASSESSMENT PURPOSE ONLY.

NE1/4 SW1/4 SEC.17 T.22S. R.5W. W.M.  
DOUGLAS COUNTY

REVISED ON  
7-28-17

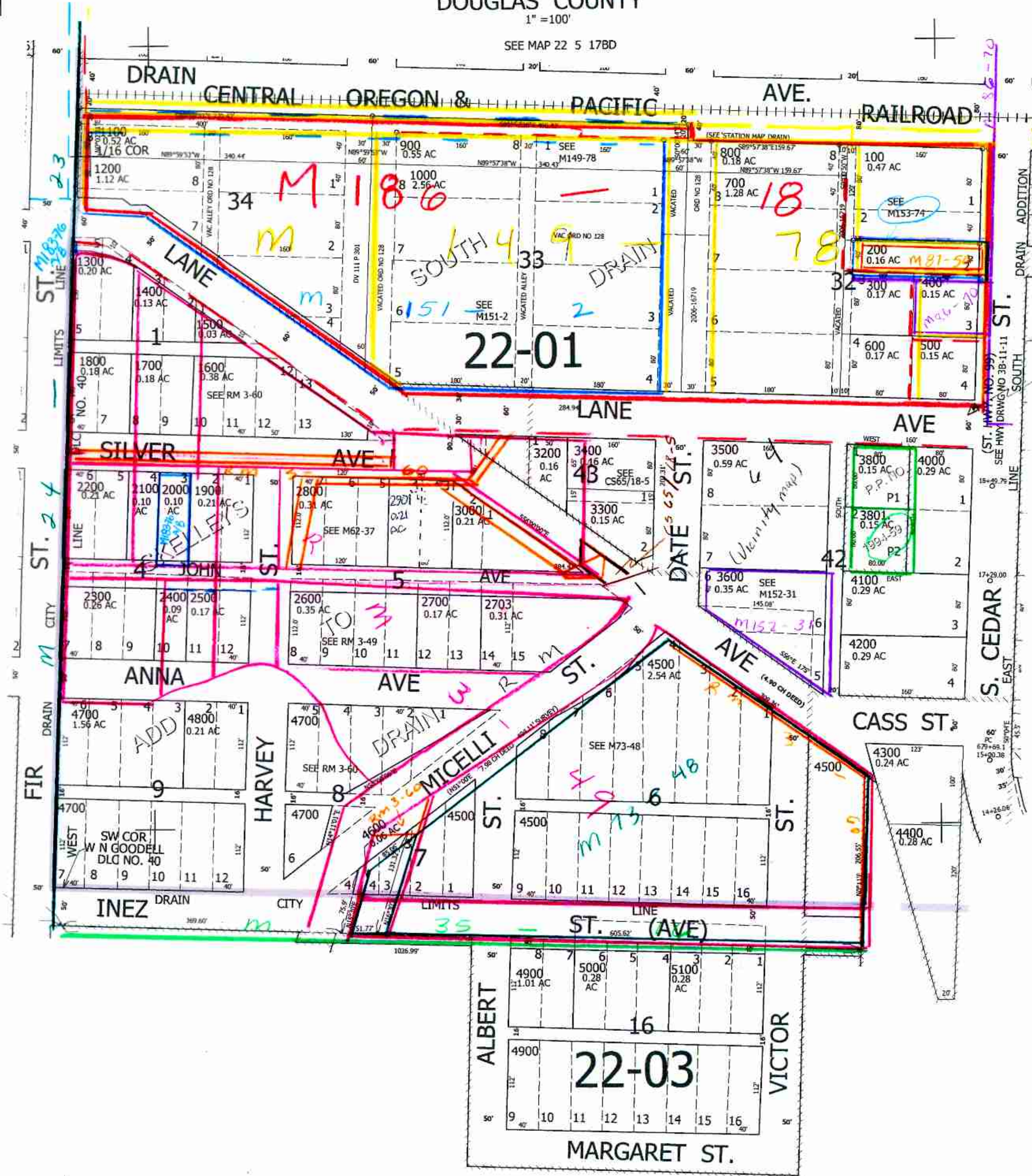
22 5 17CA  
DRAIN

1" = 100'

SEE MAP 22 5 17BD

Block 2, 3, 6, 7, 8, 9, 16 of Skellys Addition not vacated  
Per comm's title Per Agre Co Clerk, 1875

SEE MAP 22 5 17CB



CEN SEC  
M 187-17

CANCELLED NO'S  
100A1 3900 5400  
5500 5300 2401  
2701 2702 5001  
5101 5200 100M1  
800M1 900M1 1100M1  
3100 3700 2200

SEE MAP 22 5 17DB

737,000

1/16 COR

SEE MAP 22 5 17

1/16 COR

4,175,500

SEE MAP 22 5 17CA  
DRAIN