

THIS MAP WAS PREPARED FOR ASSESSMENT PURPOSE ONLY.

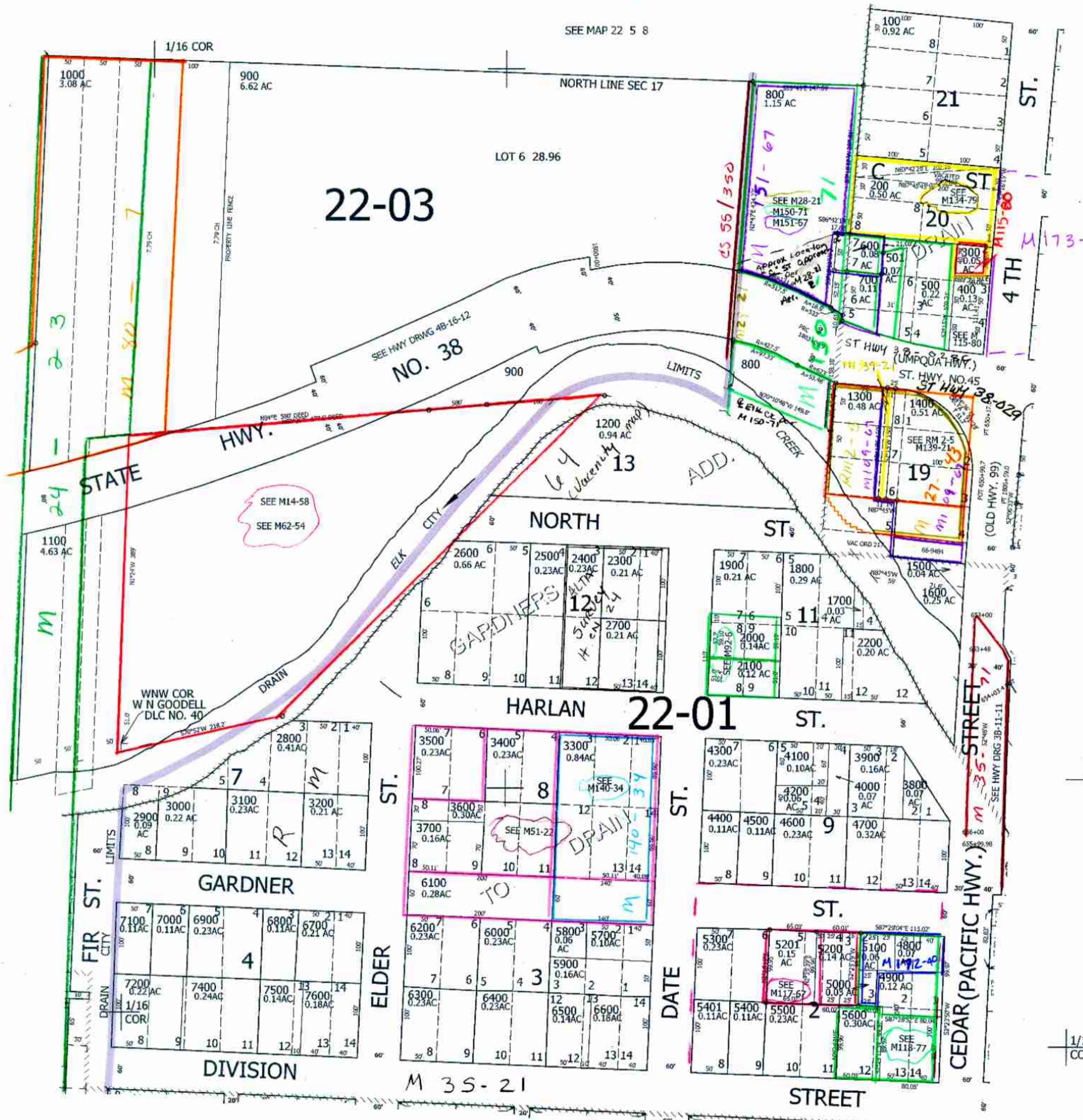
NE1/4 NW1/4 SEC.17 T.22S. R.5W. W.M.
DOUGLAS COUNTY

1" = 100'

REVISED ON
1-8-10

22 5 17BA
DRAIN

SEE MAP 22 5 8



CANCELLED NO'S
2001 7301 7300
301 5601 200A1
1401 801 802
5202

SEE MAP 22 5 17BB

SEE MAP 22 5 17AB

739,500

4,175,000
SEE MAP 22 5 17BD

CM 4/14/08
22 5 17BA
DRAIN