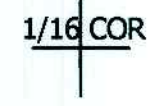
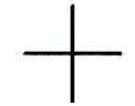


THIS MAP WAS PREPARED FOR ASSESSMENT PURPOSE ONLY.

SE1/4 NW1/4 SEC.16 T.22S. R.5W. W.M.
DOUGLAS COUNTY
1" = 100'

REVISED ON

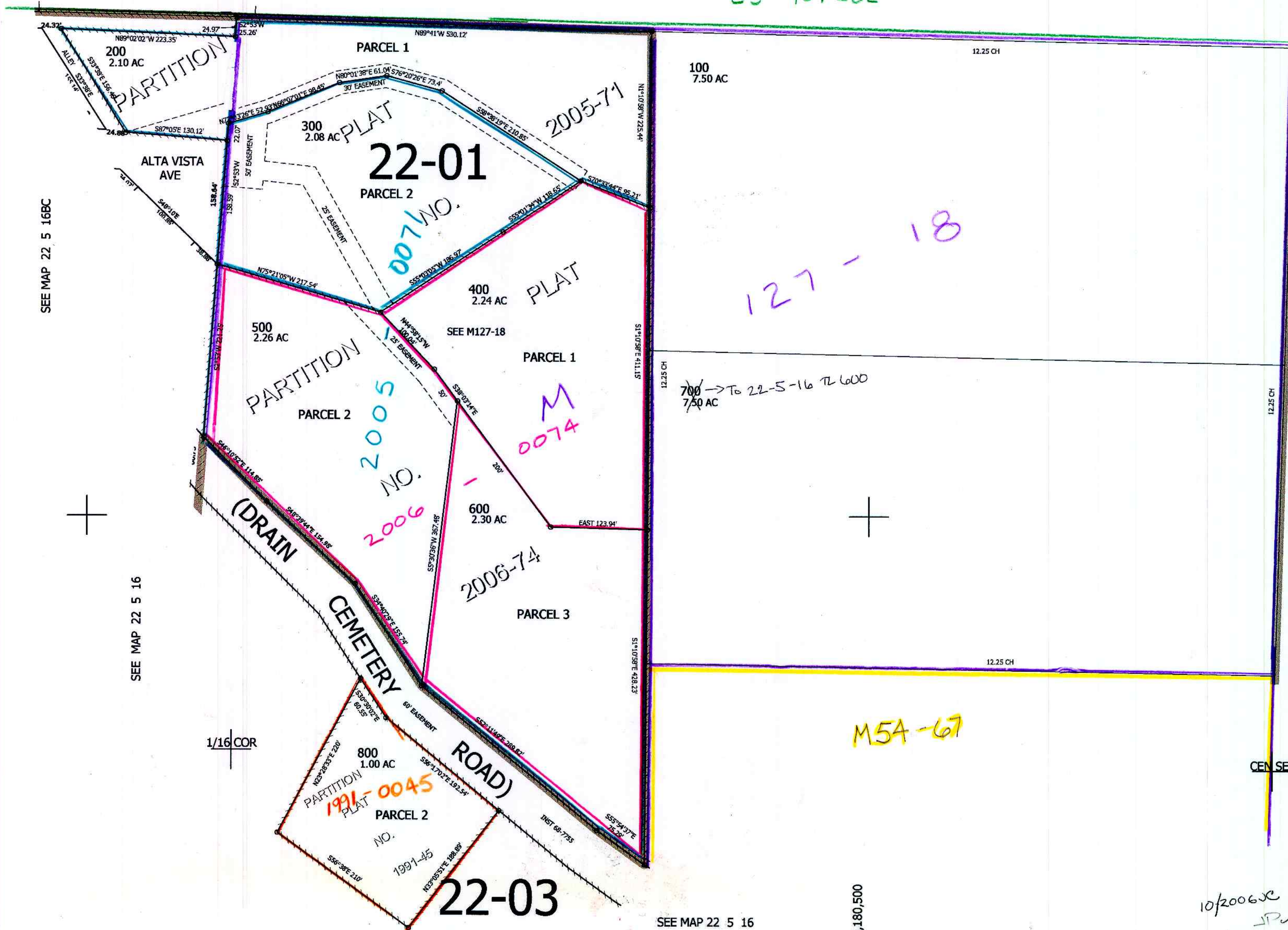
22 5 16BD
DRAIN



CANCELLED NO'S
700

SEE MAP 22 5 16

CS 40/282



SEE MAP 22 5 16

738,000

10/2006 JC JPV 22 5 16BD
DRAIN