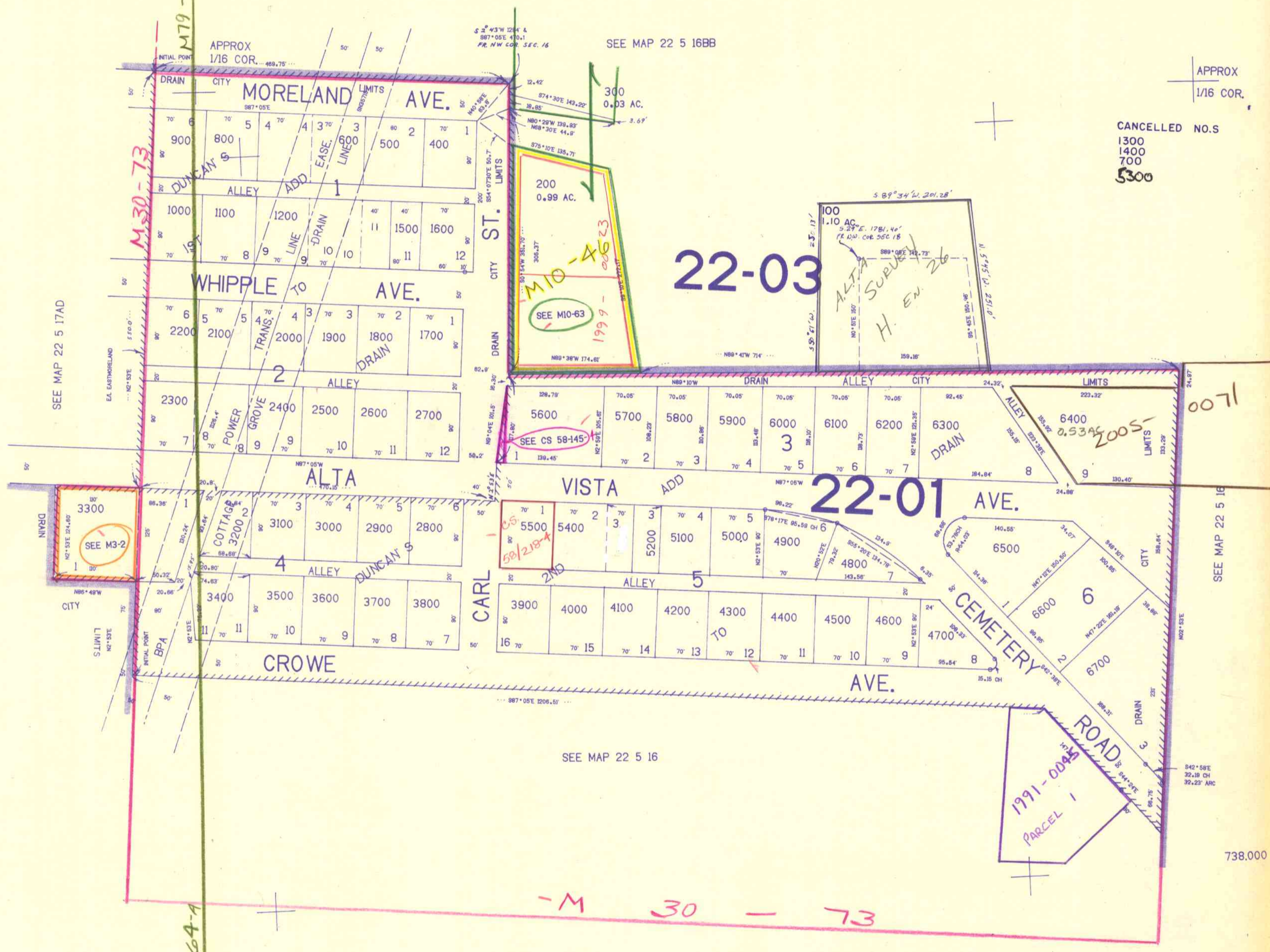


THIS MAP WAS PREPARED FOR ASSESSMENT PURPOSE ONLY.

SW1/4 NW1/4 SEC. 16 T.22S. R.5W. W.M.
DOUGLAS COUNTY

22 5 16BC
DRAIN

1"=100'



APPROX
1/16 COR.

CANCELLED NOS
1300
1400
700
5300

0071

SEE MAP 22 5 16

738.000

APPROX
1/16 COR.

22 5 16BC
DRAIN

1.258.500

9/190

M79-64 A

M30-73

M10-63
1999-00623

ALTA SURVEY
H. EN. 26

SEE MAP 22 5 17AD

SEE M3-2

SEE CS 58-145

1991-0045
PARCEL 1

M 30 - 73

APPROX
1/16 COR.