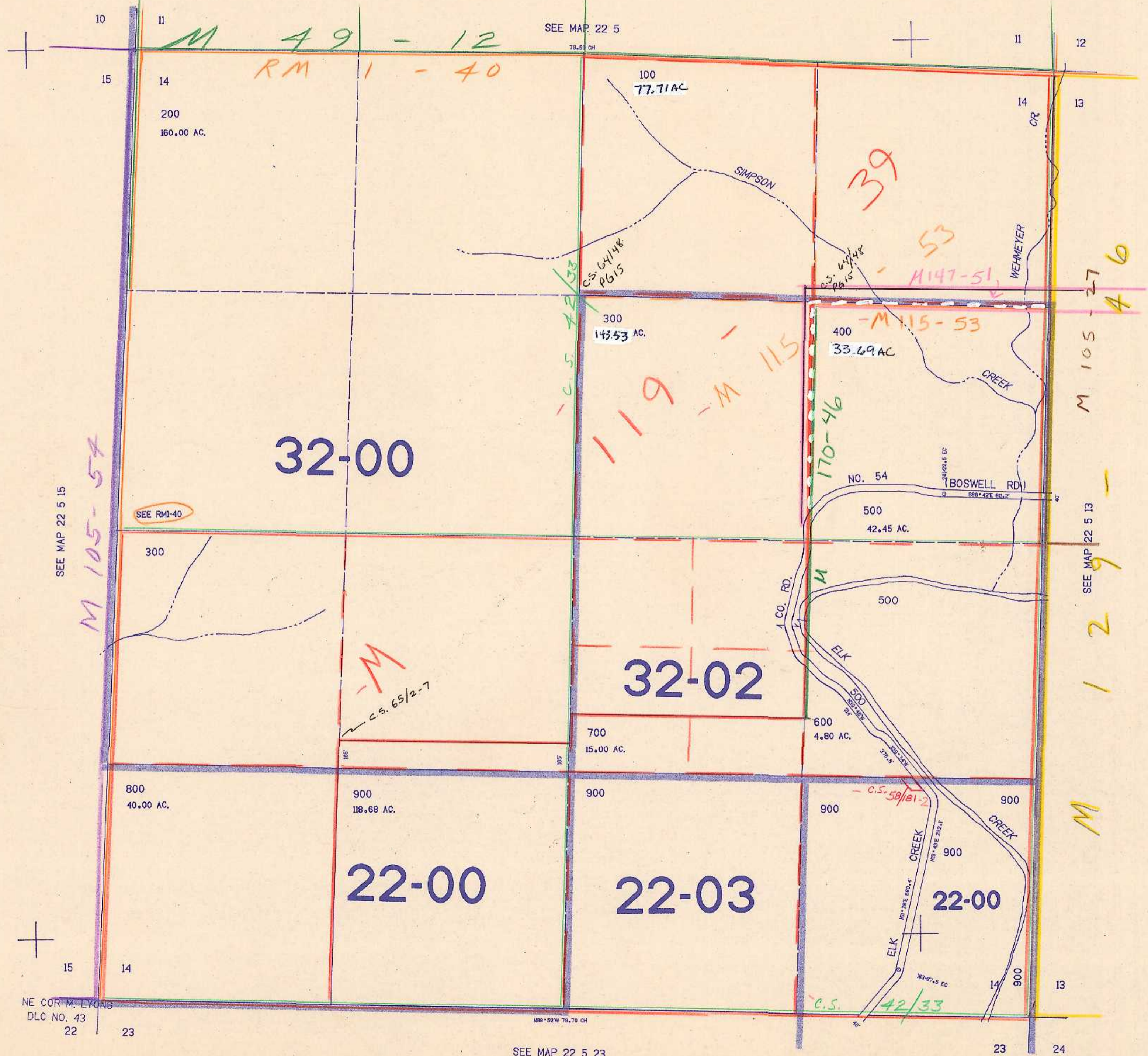


SECTION 14 T.22S. R.5W. W.M.
DOUGLAS COUNTY

22 5 14

THIS MAP WAS PREPARED FOR
ASSESSMENT PURPOSE ONLY.

1"=400'



NE COR. M. LYONS
DLC NO. 43
22 23

SEE MAP 22 5 23

1.272.500

22 5 14
7/83