

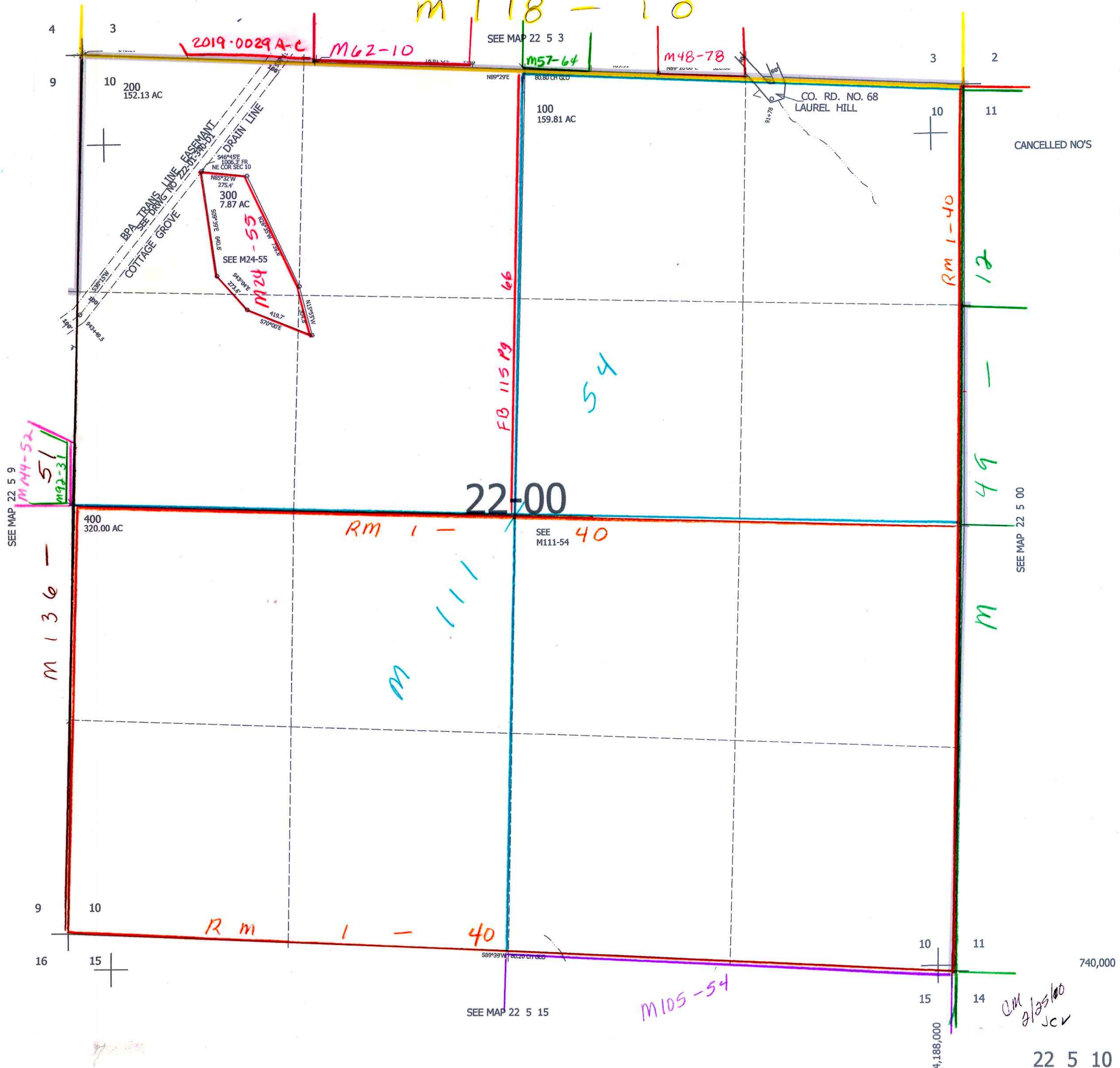
THIS MAP WAS PREPARED FOR ASSESSMENT PURPOSE ONLY.

SEC.10 T.22S. R.5W. W.M.
DOUGLAS COUNTY
1" = 400'

REVISED ON
2-25-10

22 5 10

M 118 - 10



SEE MAP 22 5 9

SEE MAP 22 5 3

SEE MAP 22 5 00

22-00

SEE MAP 22 5 15

22 5 10

CM alaska JCV