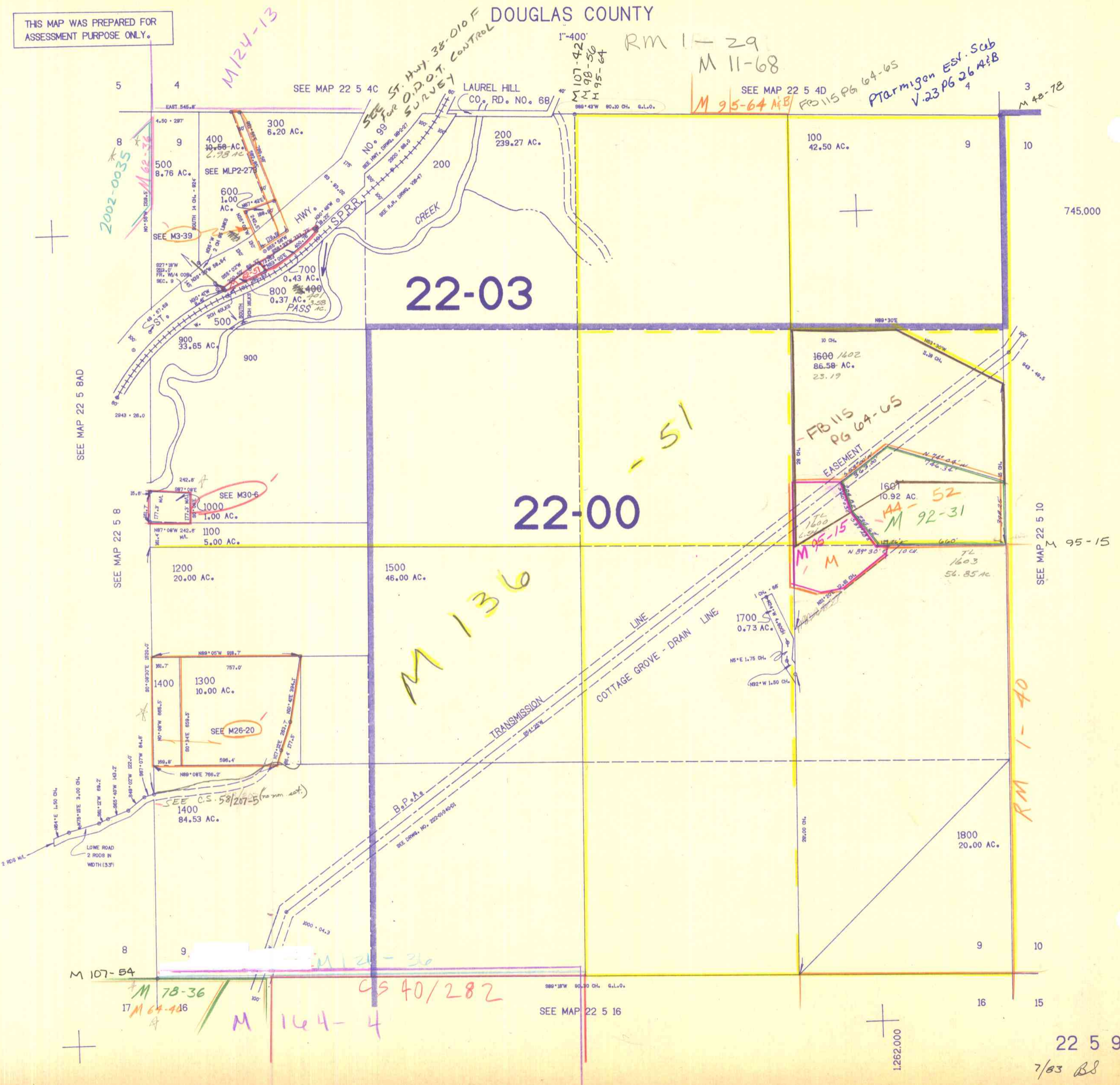


SECTION 9 T.22S. R.5W. W.M.
DOUGLAS COUNTY

22 5 9

THIS MAP WAS PREPARED FOR
ASSESSMENT PURPOSE ONLY.



SEE MAP 22 5 8AD

SEE MAP 22 5 8

M 107-54

M 78-36
M 64-486

M 144-4

CS 40/282

SEE MAP 22 5 16

RM 1-40

SEE MAP 22 5 10

22 5 9
7/83 BS