

THIS MAP WAS PREPARED FOR  
ASSESSMENT PURPOSE ONLY.

SE1/4 SE1/4 SEC. 8 T.22S. R.5W. W.M.  
DOUGLAS COUNTY

REVISED ON  
1-26-96

22 5 8DD  
DRAIN

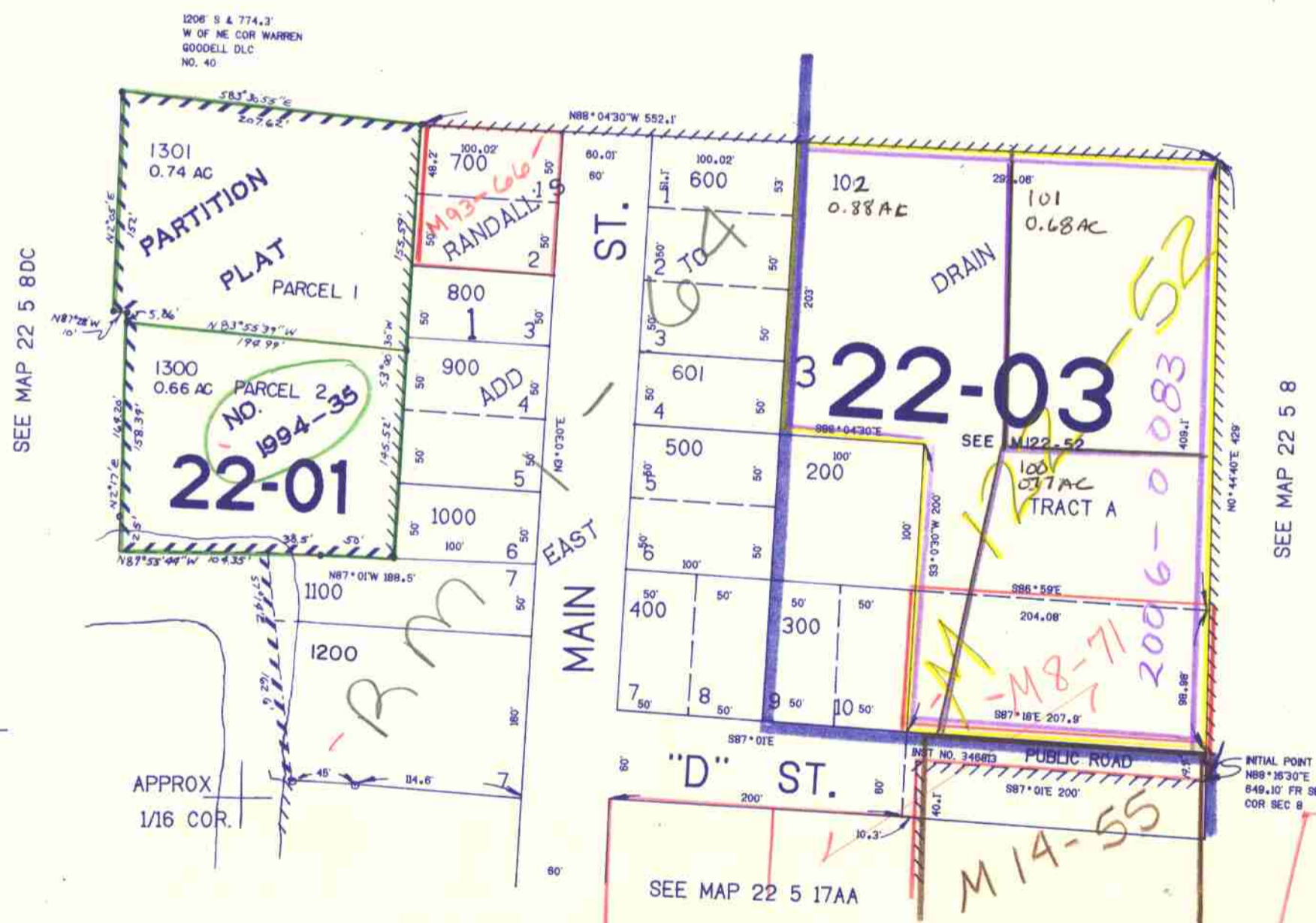
1"=100'

APPROX  
1/16 COR.

APPROX  
1/16 COR.

See CS 58/194-1  
for Drain Vicinity Map

SEE MAP 22 5 8



740.500

22 5 8DD  
DRAIN

2/96  
ec