

THIS MAP WAS PREPARED FOR ASSESSMENT PURPOSE ONLY.

SE1/4 NE1/4 SEC. 8 T.22S. R.5W. W.M.  
DOUGLAS COUNTY

REVISED ON  
3-16-95

22 5 8AD  
DRAIN

1"=100'

APPROX.  
1/16 COR.

APPROX  
1/16 COR.

22-03

22-03

Cancelled  
1202 1201 1607  
1300 1608 1701  
499 201 1601  
1602 1603

SEE MAP 22 5 8

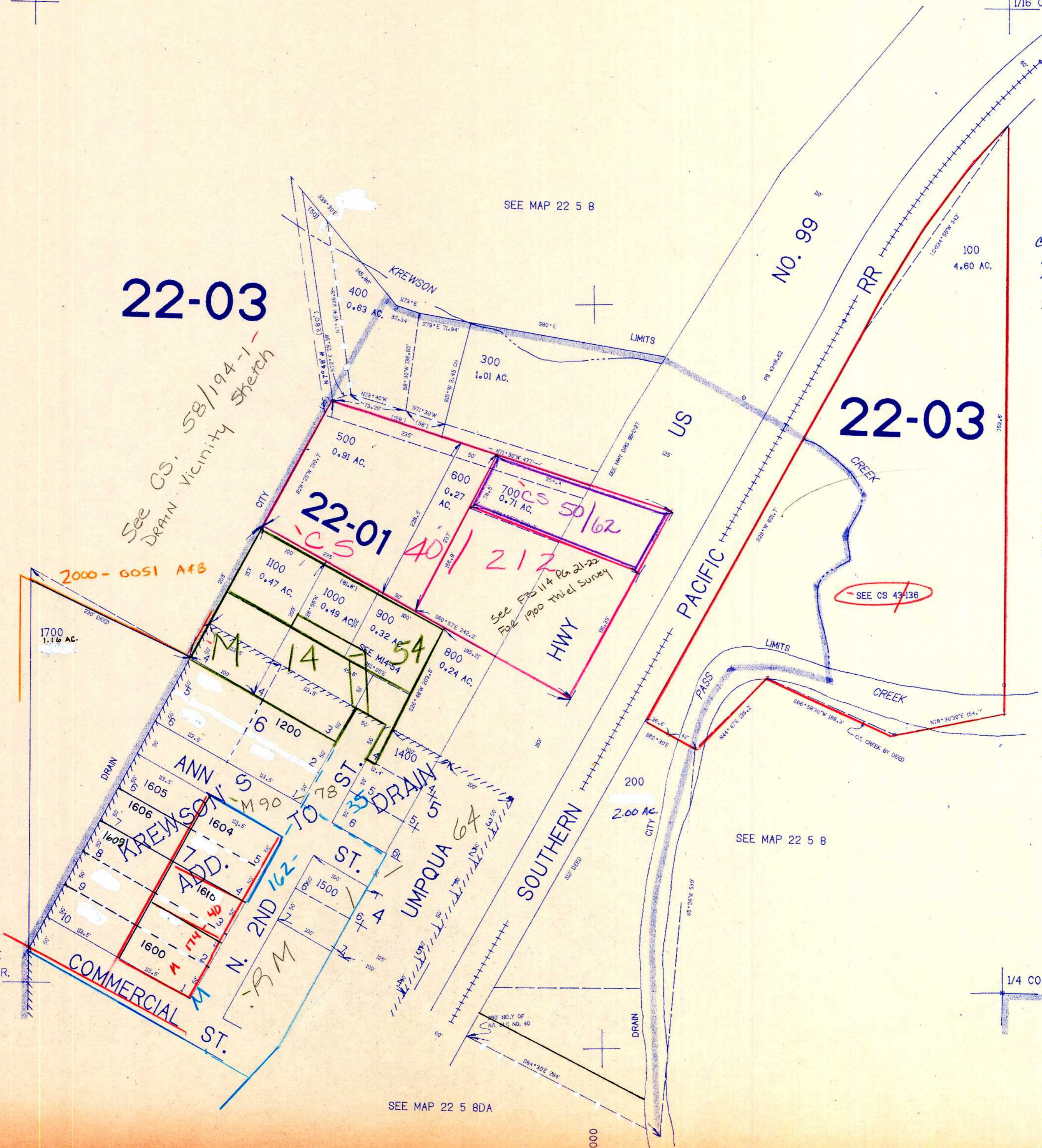
SEE MAP 22 5 7

SEE MAP 22 5 8

SEE MAP 22 5 8DA

743.000

22 5 8AD  
DRAIN



APPROX  
1/16 COR.

1/4 COR.

1.257,000

APR 95