

THIS MAP WAS PREPARED FOR ASSESSMENT PURPOSE ONLY.

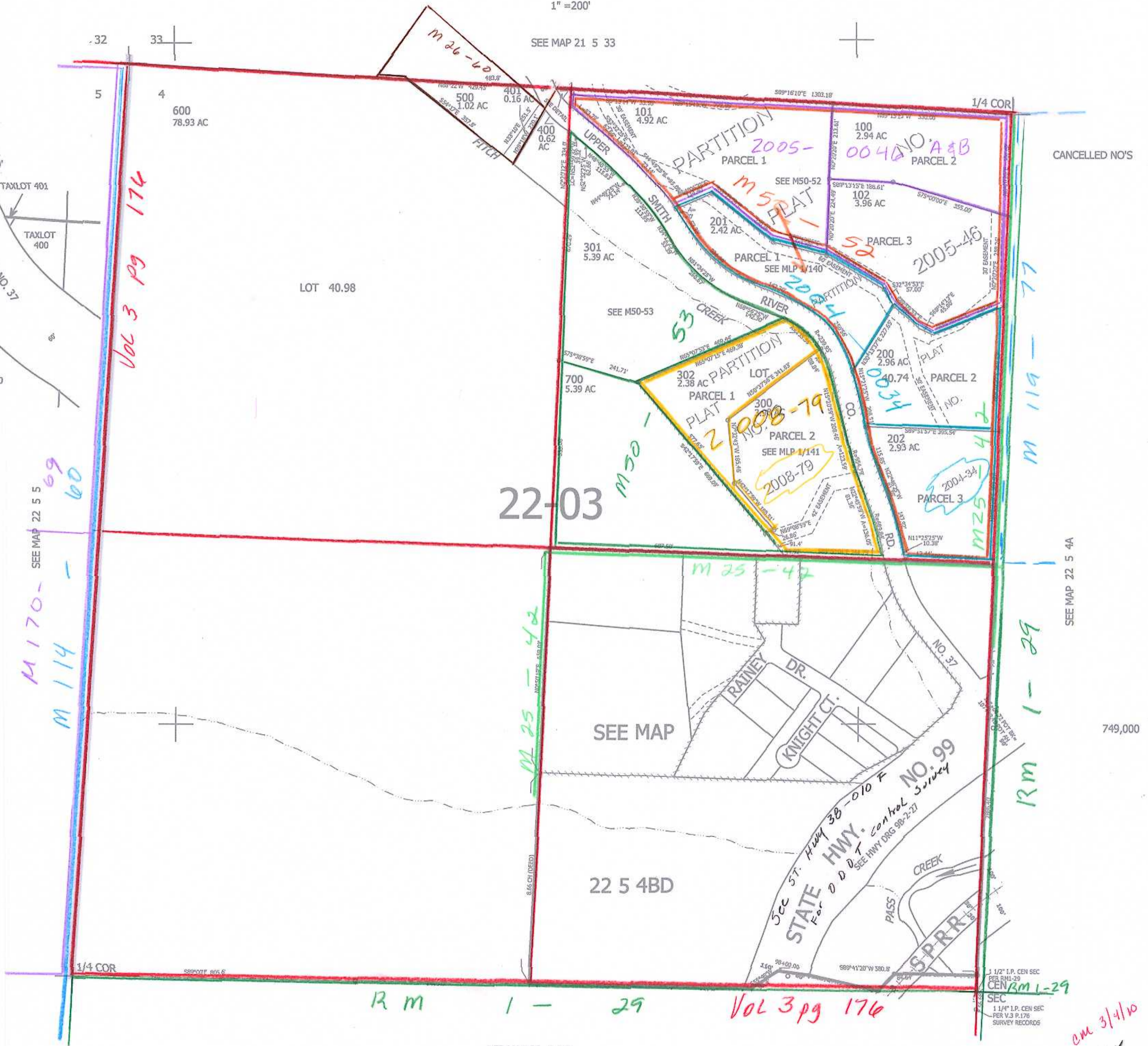
NW1/4 SEC.4 T.22S. R.5W. W.M.
DOUGLAS COUNTY

REVISED ON
2-24-10

22 5 4B
& INDEX

1" = 200'

SEE MAP 21 5 33



DETAIL
1" = 50'

CANCELLED NO'S

22-03

SEE MAP

22 5 4BD

RM 1-29

Vol 3 pg 176

SEE MAP 22 5 4A

749,000

SEE MAP 22 5 4C

4,181,000

1 1/2" I.P. CEN SEC
PER RM 1-29
CEN RM 1-29
SEC
1 1/4" I.P. CEN SEC
PER V.3 P.176
SURVEY RECORDS

am 3/1/10
JC

22 5 4B
& INDEX