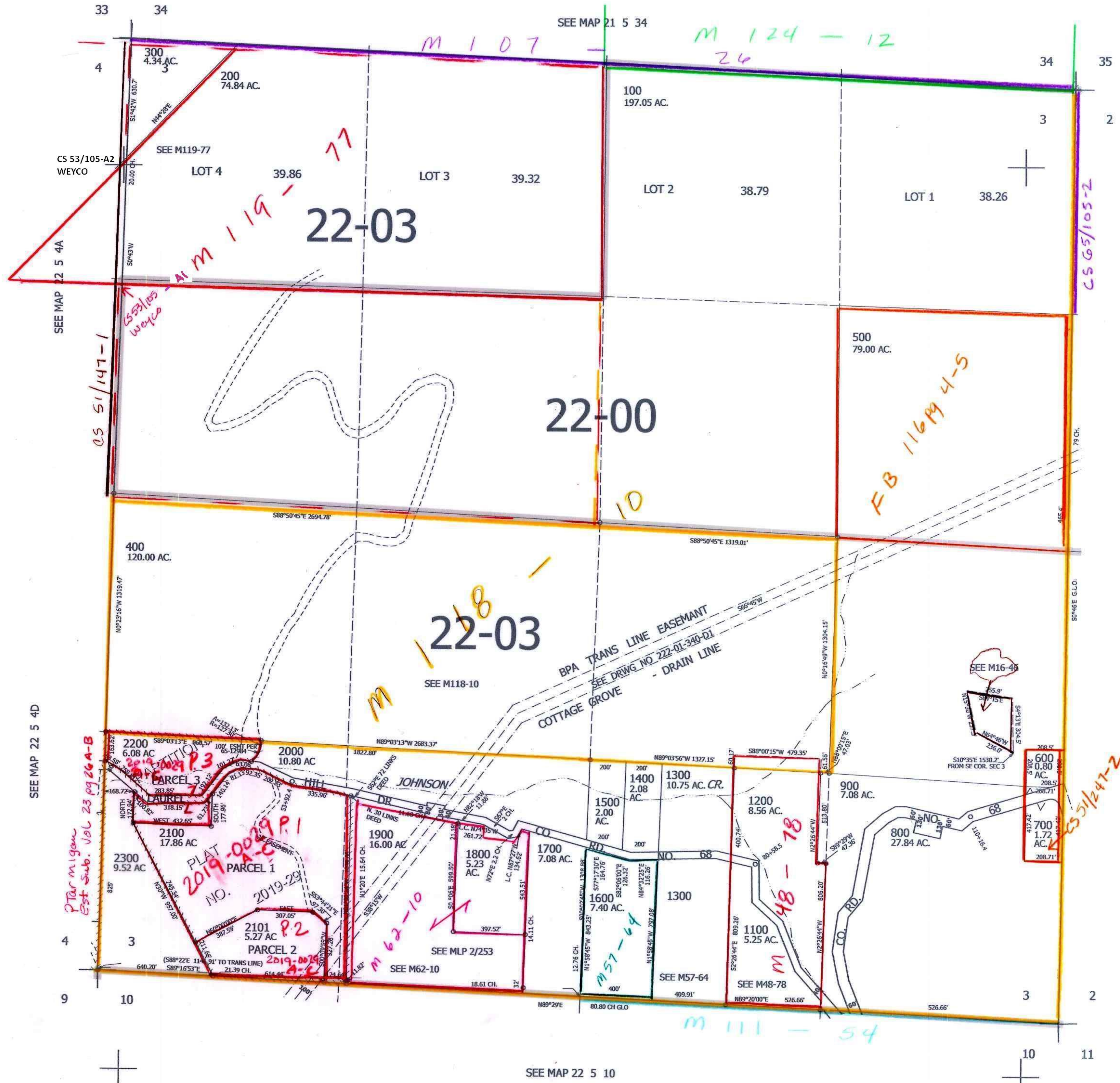


THIS MAP WAS PREPARED FOR ASSESSMENT PURPOSE ONLY.

SEC.3 T.22S. R.5W. W.M.  
DOUGLAS COUNTY  
1" = 400'

REVISED ON  
10-17-19

22 5 3



750,000

CANCELLED NO'S  
1000 2102

SEE MAP 22 5 00

SEE MAP 22 5 4D

SEE MAP 22 5 10

4,189,000

Jul  
31/2/10  
JCV

22 5 3