

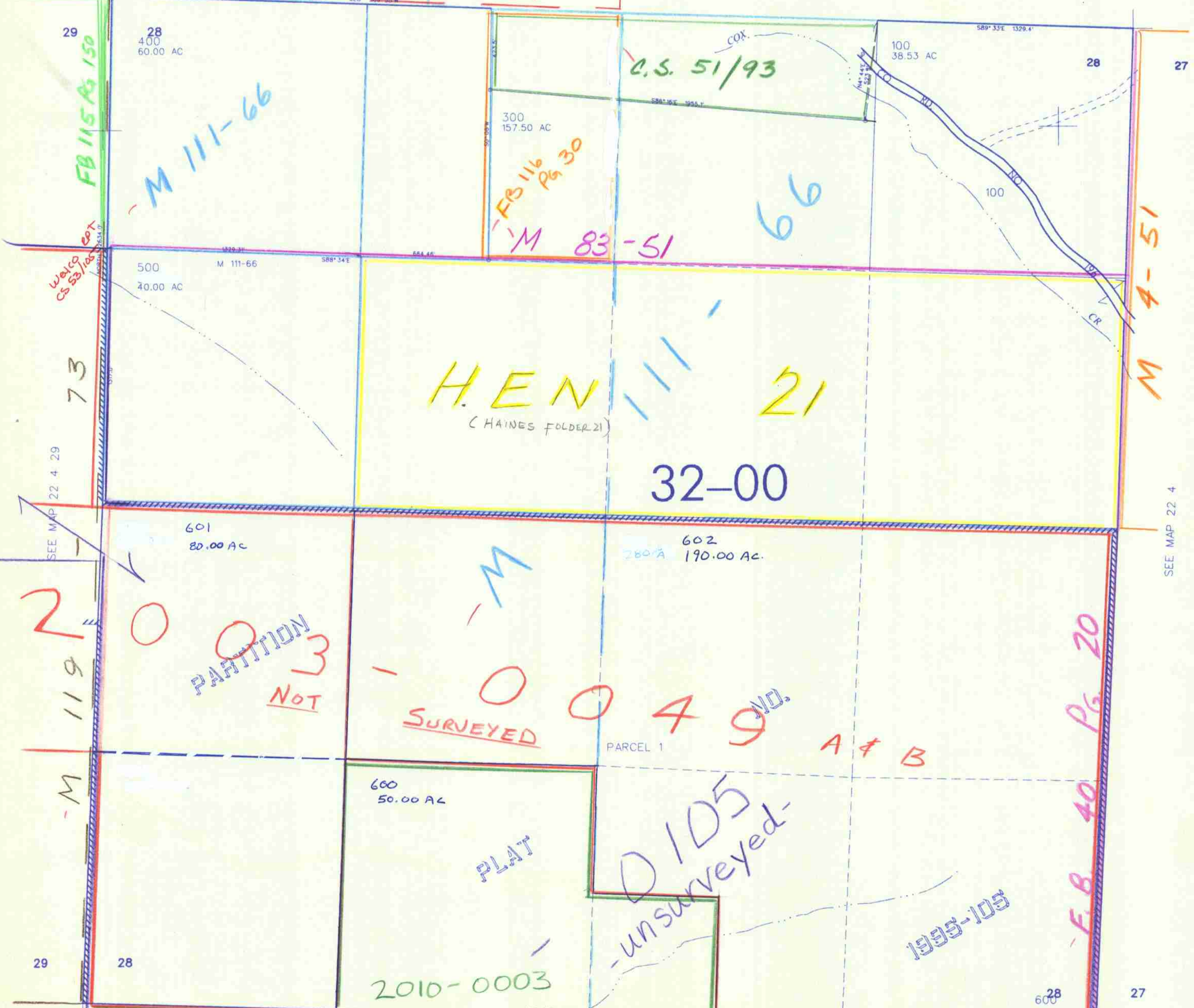
MAP WAS PREPARED FOR ASSESSMENT PURPOSE ONLY

SEC. 28 T.22S. R. 4W W.M. DOUGLAS COUNTY

REVISED ON 12-19-97

1" = 400'

M 20 21 1 3 7 - 1 5 1 SEE MAP 22 4 21



CANCELLED NO'S 700 200 500M 603

2003 PARTITION NOT SURVEYED

0049 NO. A & B

PLAT 0105 unsurveyed

2010-0003

unsurveyed

1995

4,215,000

723,000