

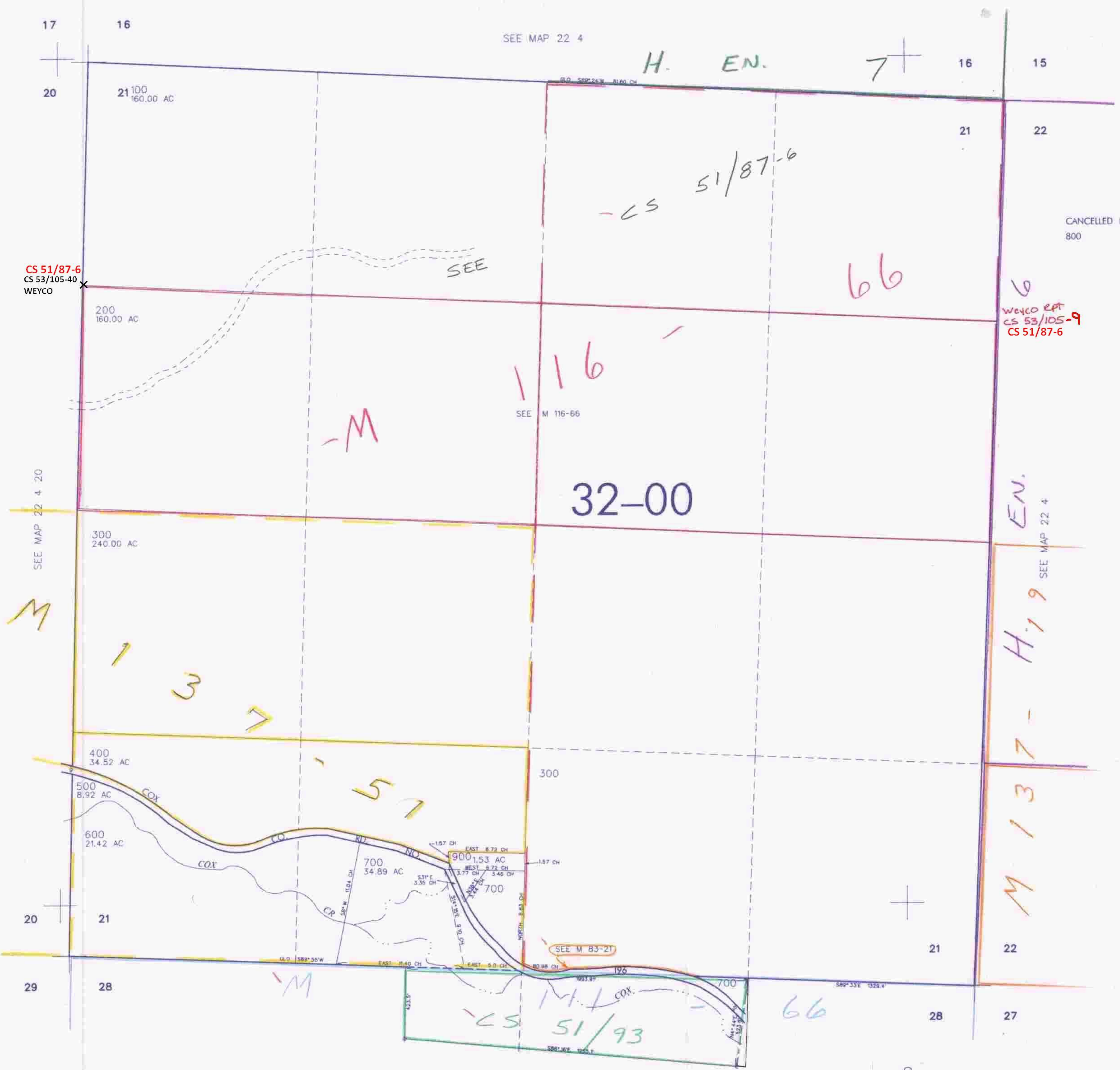
SEC. 21 T.22S. R.4 W W.M.
DOUGLAS COUNTY

REVISED ON
12-19-97

22 4 21

THIS MAP WAS PREPARED FOR
ASSESSMENT PURPOSE ONLY

1"=400'



SEE MAP 22 4

H. EN.

7+

16

15

17

16

20

2100
160.00 AC

21

22

CS 51/87-6
CS 53/105-40
WEYCO

200
160.00 AC

SEE

CS 51/87-6

66

CANCELLED NO'S
800

WEYCO REP
CS 53/105-9
CS 51/87-6

M

SEE M 116-66

116

32-00

SEE MAP 22 4 20

M

300
240.00 AC

EN.

SEE MAP 22 4

1
3
7

400
34.52 AC

300

500
8.92 AC

600
21.42 AC

57

20

21

700
34.89 AC

900
1.53 AC

700

SEE M 83-21

21

22

29

28

M

SEE MAP 22 4 28

CS 51/93

66

28

27

4,215,000

729,000

22 4 21
2/98 JP
MUR