

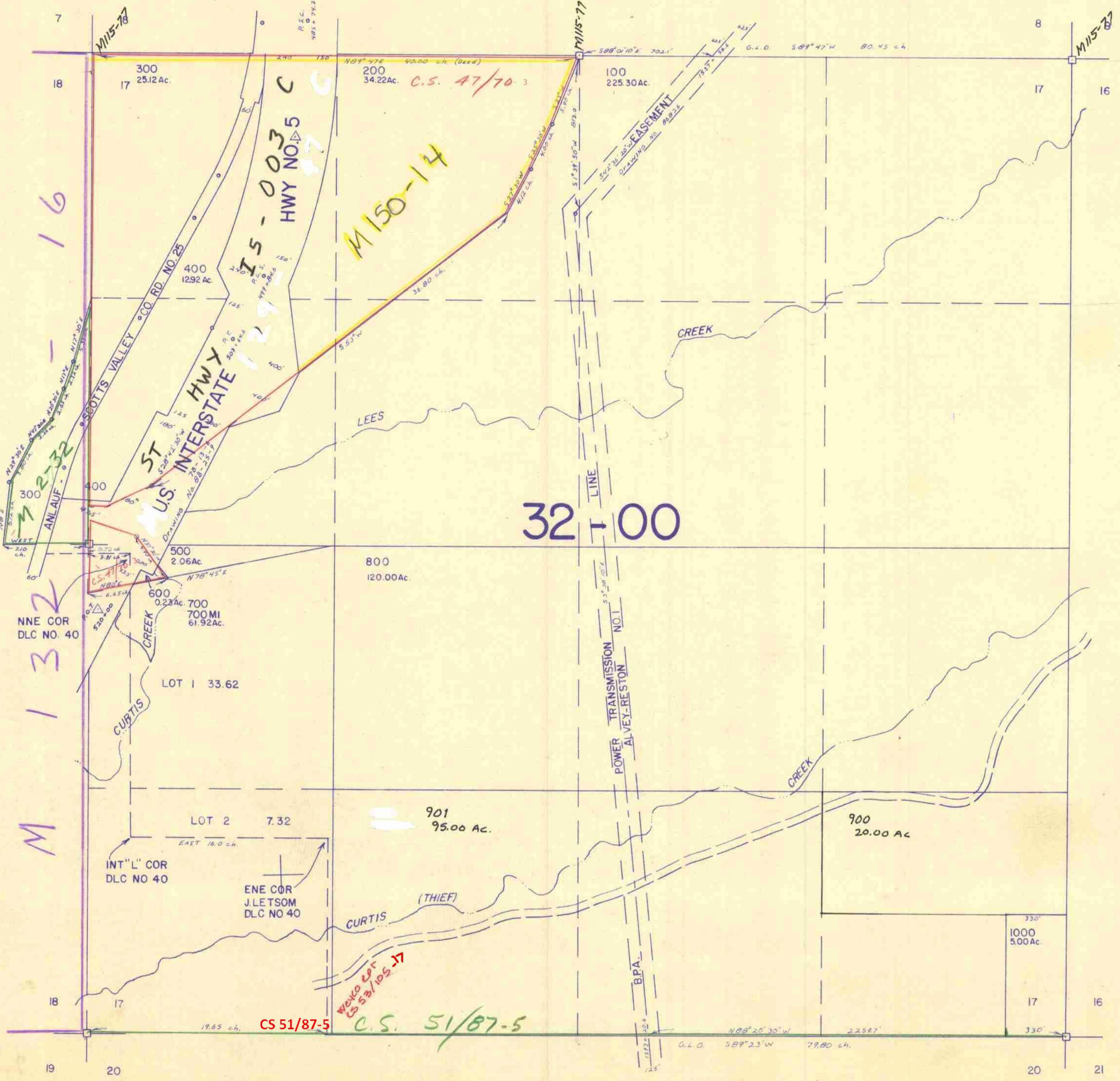
SECTION 17 T.22S. R. 4 W. W.M.
DOUGLAS COUNTY

1" = 400'

SEE MAP 22 4 8

SEE MAP 22 4 18

SEE MAP 22 4



M 16

M 132

M 132

IS-003 C
HWY NO. 5

M 150-14

32-00

CS 51/87-5
C.S. 51/87-5

7/83
BL

SEE MAP 22 4 20

735,000

1,290,000