

THIS MAP WAS PREPARED FOR
ASSESSMENT PURPOSE ONLY.

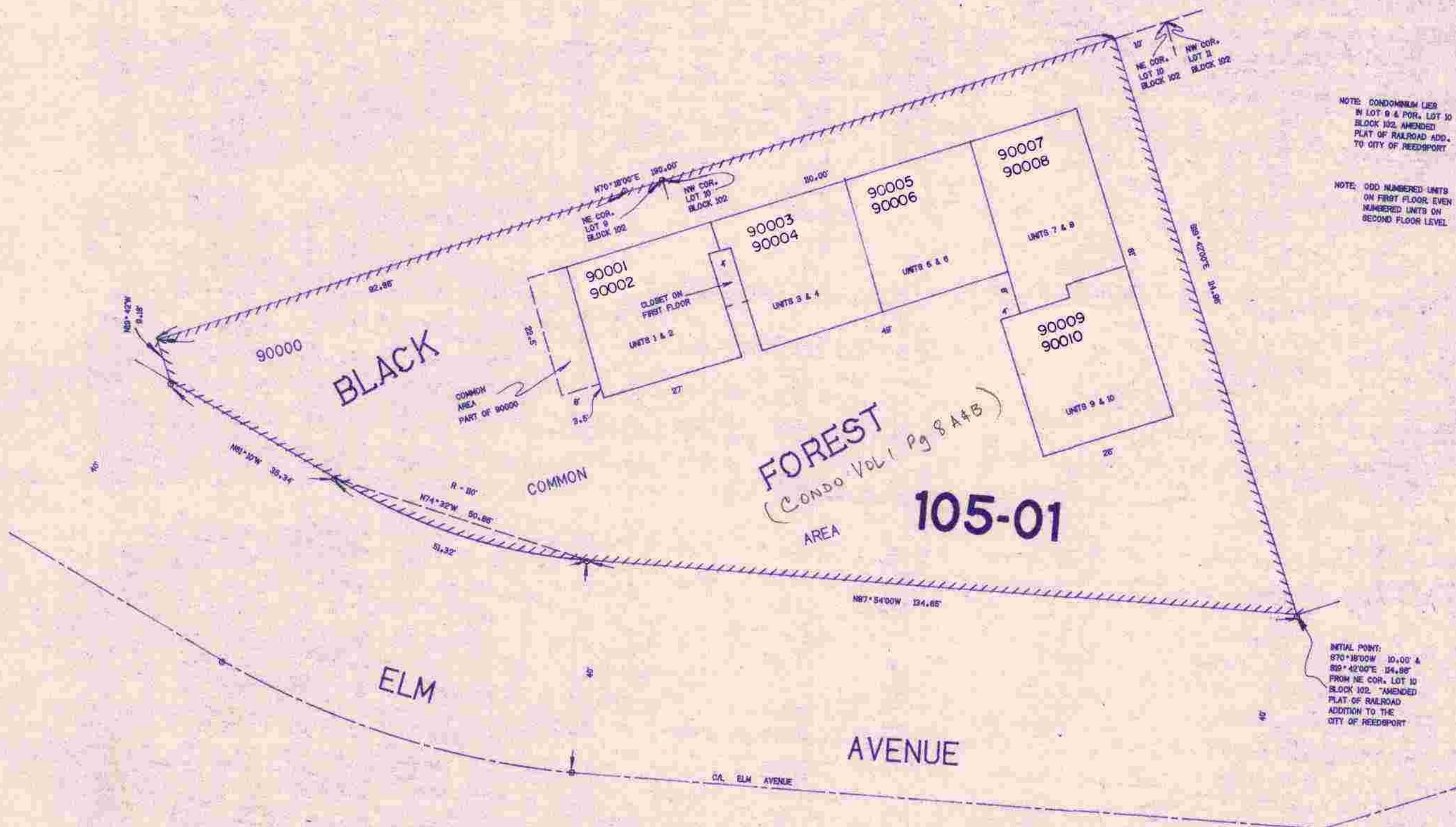
SUPPLEMENTAL MAP NO.1
IN
SW1/4 SW1/4 SEC.35 T.21S. R.12W. W.M.
DOUGLAS COUNTY

REVISED ON
6-15-92

21 12 35CC
SUPPLEMENTAL
MAP NO.1
REEDSPORT

1"=60'

CONDOMINIUM



NOTE: CONDOMINIUM LER
IN LOT 9 & POR. LOT 10
BLOCK 102, AMENDED
PLAT OF RAILROAD ADD.
TO CITY OF REEDSPORT

NOTE: ODD NUMBERED UNITS
ON FIRST FLOOR, EVEN
NUMBERED UNITS ON
SECOND FLOOR LEVEL

INITIAL POINT:
S70°18'00"W 10.00' &
S69°42'00"E 14.88'
FROM NE COR. LOT 10
BLOCK 102, "AMENDED"
PLAT OF RAILROAD
ADDITION TO THE
CITY OF REEDSPORT

21 12 35CC
SUPPLEMENTAL
MAP NO.1
REEDSPORT

6/92