

THIS MAP WAS PREPARED FOR ASSESSMENT PURPOSE ONLY.

SE1/4 NW1/4 SEC.35 T.21S. R.12W. W.M.
DOUGLAS COUNTY
1" = 100'

REVISED ON
12-12-05

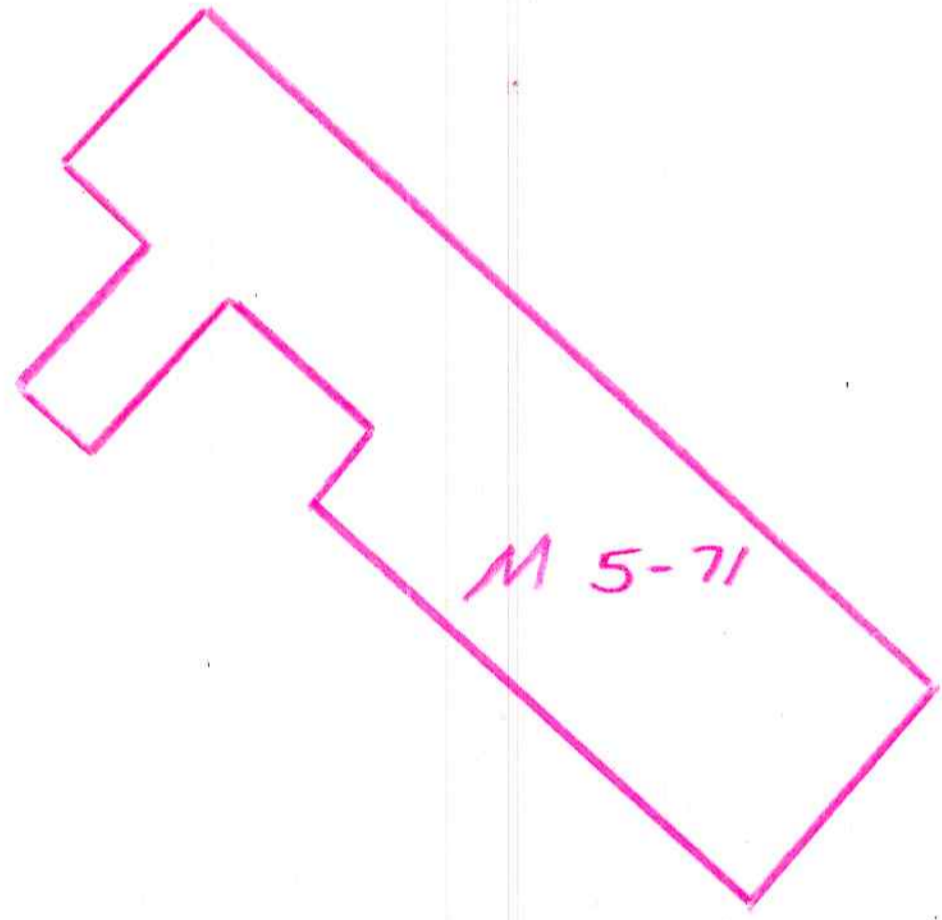
21 12 35BD
REEDSPORT

1/16 COR

+

1/16 COR

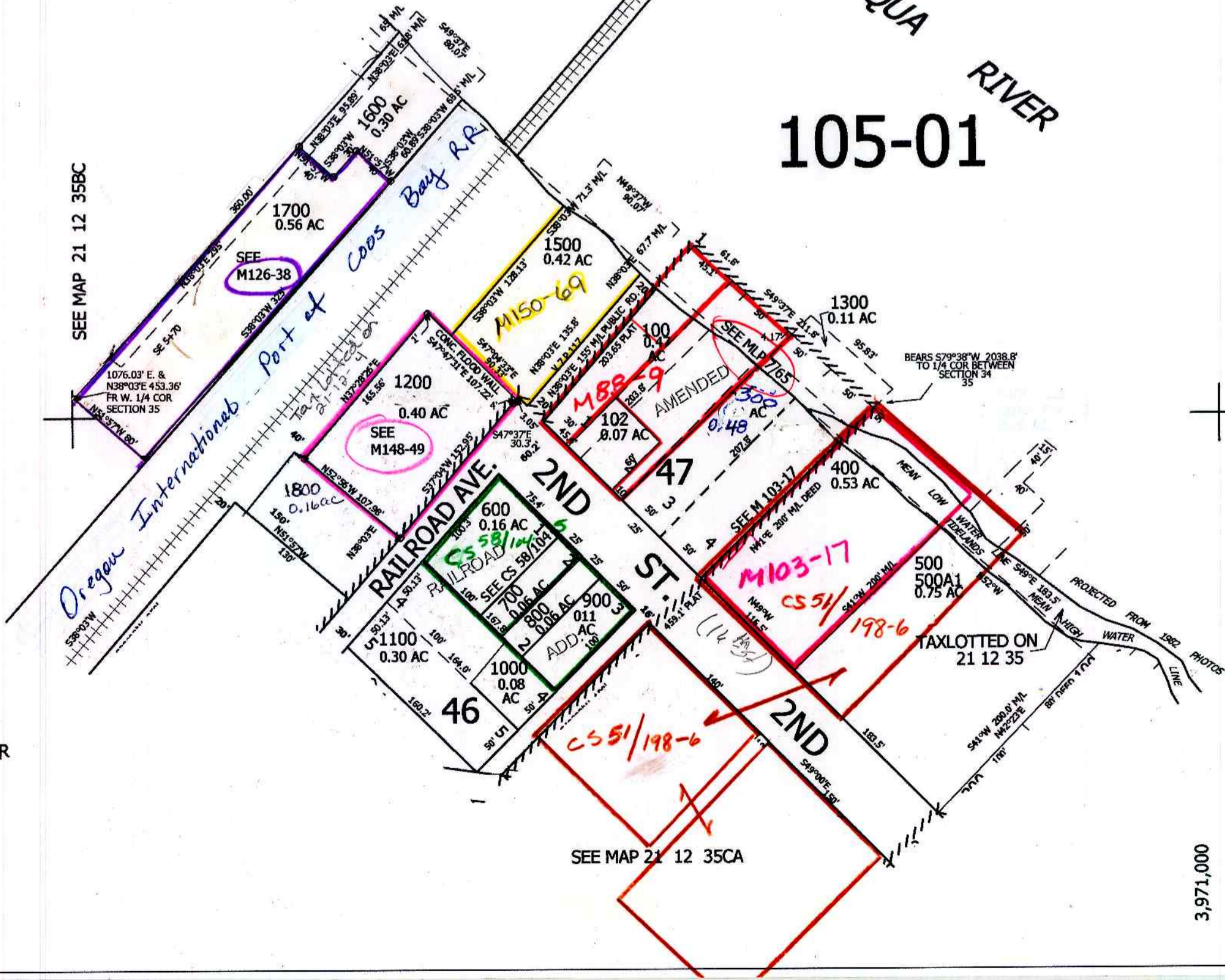
CANCELLED NO'S
101 201 1600A1
100A1 1200M1 1500M1
1600M1 1400, 200



SEE MAP 21 12 35

UMPQUA RIVER
105-01

SEE MAP 21 12 35BC



SEE MAP 21 12 35

763,500

1/16 COR

+

CEN SEC

SEE MAP 21 12 35CA

3,971,000

CW
12/13/05

21 12 35BD
REEDSPORT