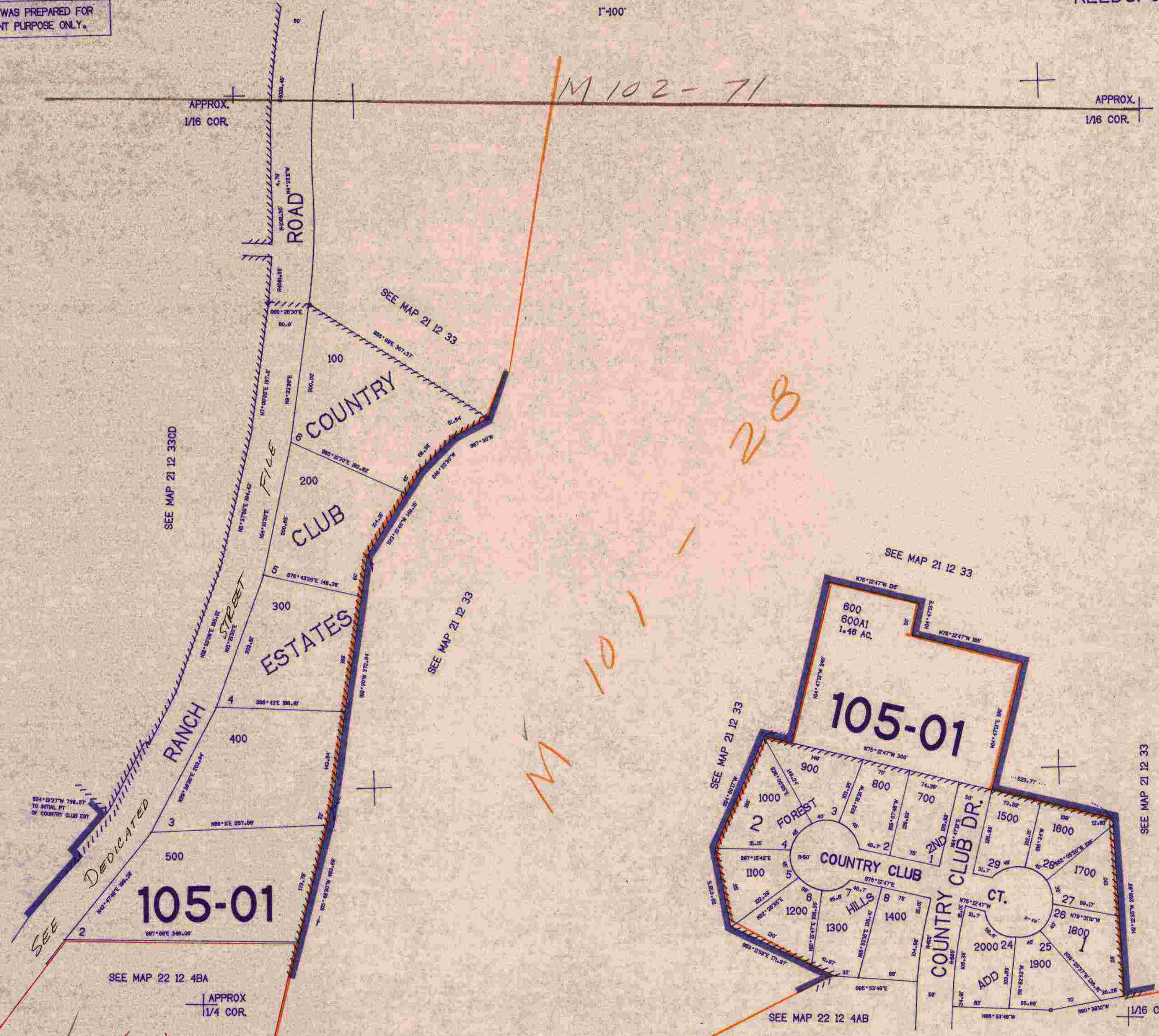


SW1/4 SE1/4 SEC. 33 T.21S. R.12W. W.M.  
DOUGLAS COUNTY

21 12 33DC  
REEDSPORT

1"=100'

THIS MAP WAS PREPARED FOR  
ASSESSMENT PURPOSE ONLY.



M 102-71

28

M 101-1

CS 55/38-1  
M 101-28

21 12 33DC  
REEDSPORT

40.750

1/83