

THIS MAP WAS PREPARED FOR ASSESSMENT PURPOSE ONLY.

NE1/4 SW1/4 SEC.33 T.21S. R.12W. W.M.
DOUGLAS COUNTY

1" = 100'

REVISED ON

21 12 33CA
REEDSPORT

1/16 COR

CEN. SEC.

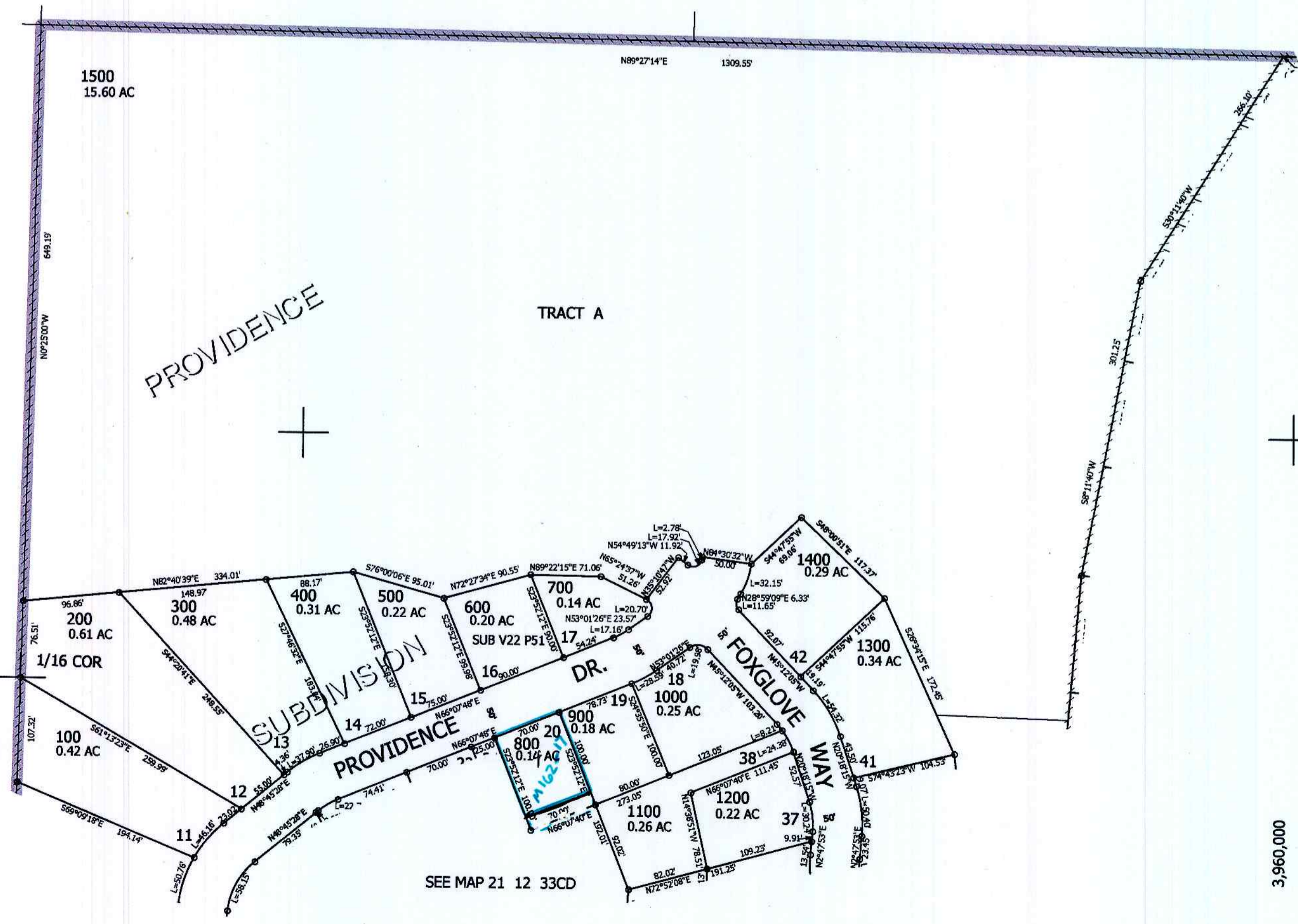
CANCELLED NO'S

SEE MAP 21 12 33

SEE MAP 21 12 33

SEE MAP 21 12 33DB

763,000



SEE MAP 21 12 33CD

3,960,000

1/16 COR

21 12 33CA
REEDSPORT