

SECTION 32 T.21S. R.12W. W.M.
DOUGLAS COUNTY

21 12 32

THIS MAP WAS PREPARED FOR
ASSESSMENT PURPOSE ONLY.

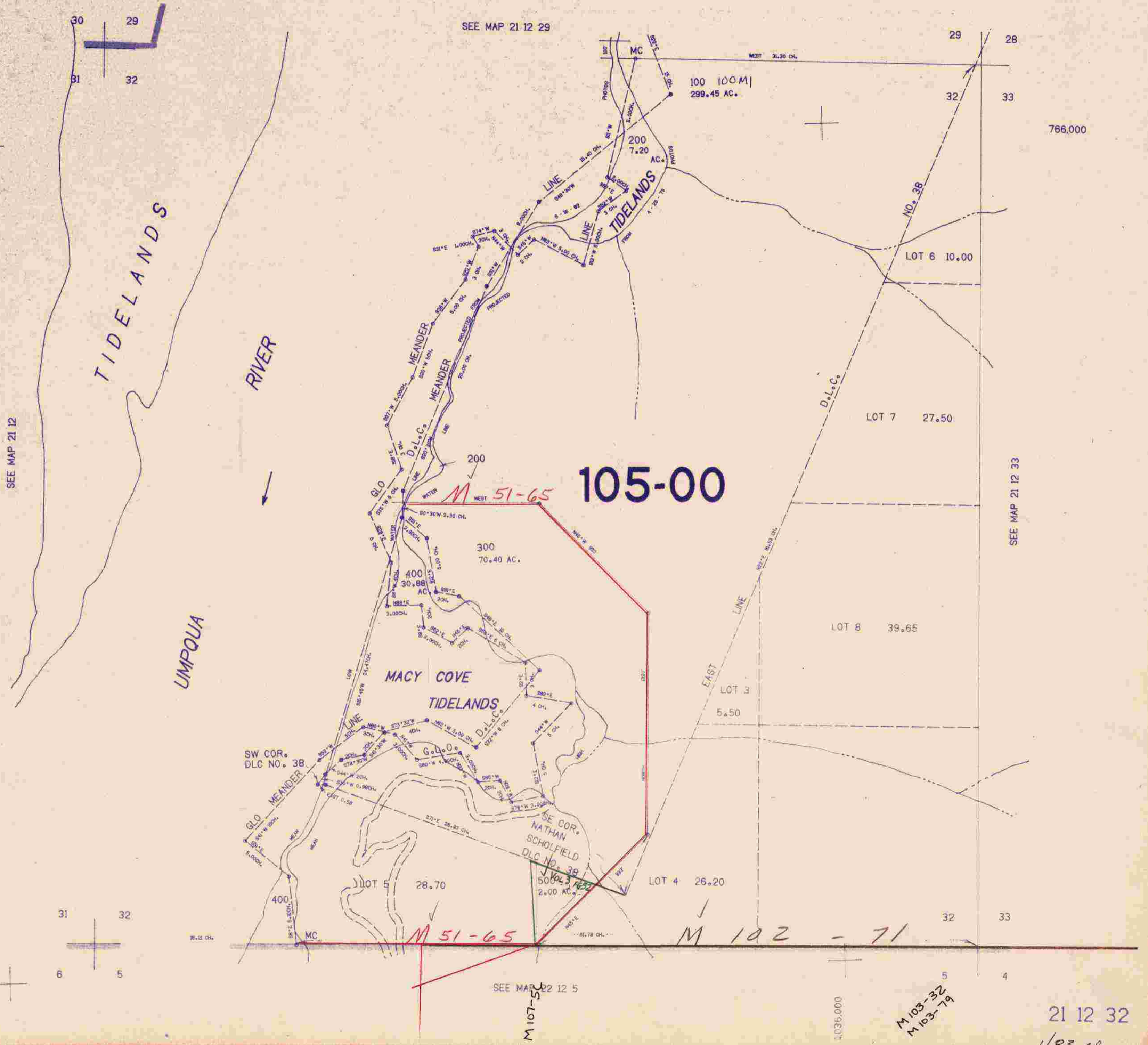
1"=400'

SEE MAP 21 12 29

SEE MAP 21 12

SEE MAP 21 12 33

SEE MAP 21 12 5



21 12 32

1/83 BS

M 103-32
M 103-79

1036,000

M 107-56