

THIS MAP WAS PREPARED FOR
ASSESSMENT PURPOSE ONLY.

SW1/4 SE1/4 SEC.22 T.21S. R.12W. W.M.
DOUGLAS COUNTY
1" = 100'

21 12 22DC

REVISED ON
7-31-17

1/16
COR

SW COR
LOT 8
NW COR
LOT 9

CANCELLED NO'S
901 1001 6800
1002 100M1 5500M1
1501 1003 1502
6100 2702 3401
6300

SEE MAP 21 12 22

TAXLOTTED
ON 21 12 22

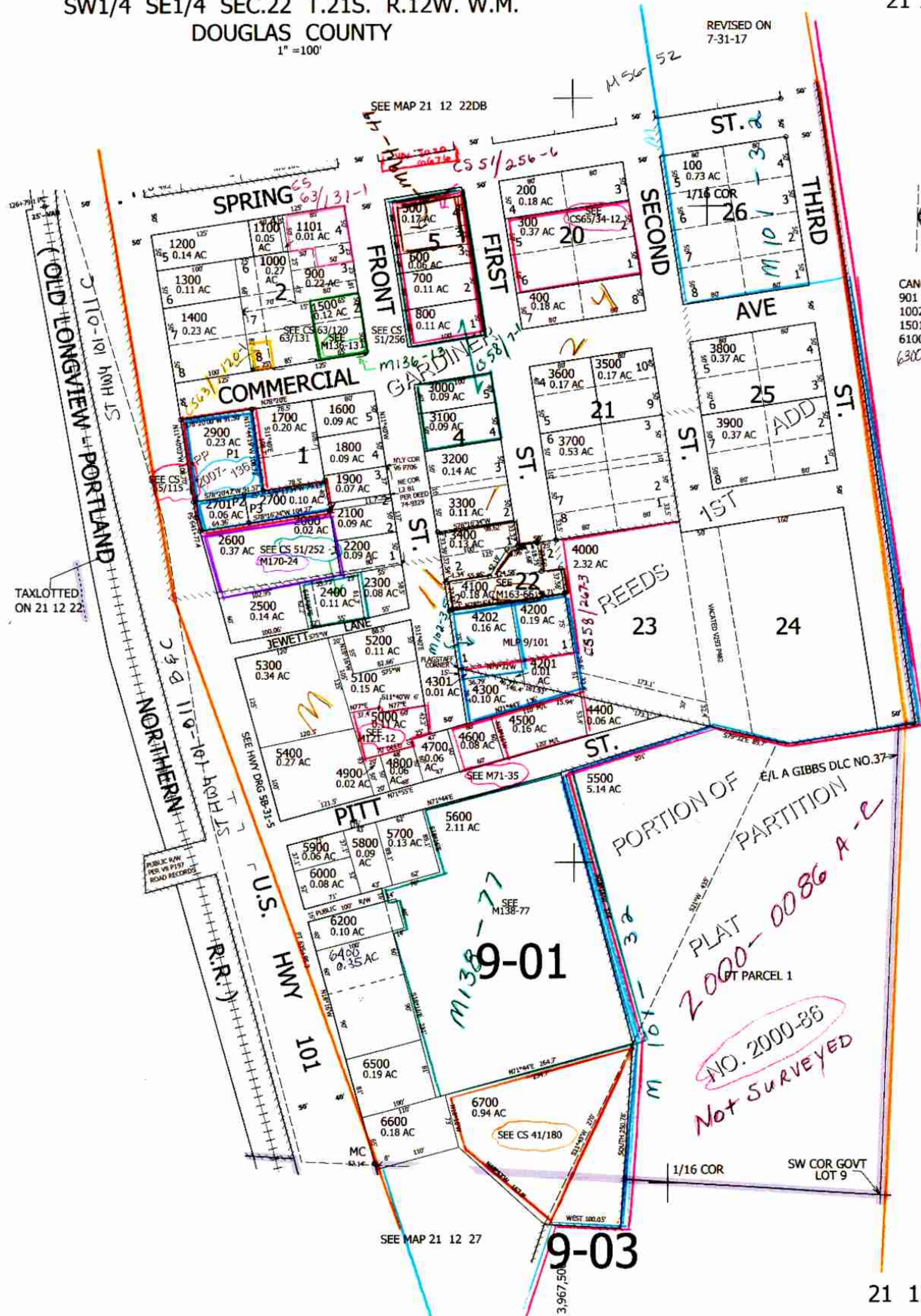
SEE MAP 21 12 22

772,500

SEE MAP 21 12 27

aw 8/25/17
scr

21 12 22DC



1/4
COR

PORTION OF
PARTITION
PLAT
2000-0086 A-E
PT PARCEL 1
NO. 2000-88
Not Surveyed

9-03