

THIS MAP WAS PREPARED FOR ASSESSMENT PURPOSE ONLY.

SW1/4 NE1/4 SEC.22 T.21S. R.12W. W.M.
DOUGLAS COUNTY

1" = 100'

REVISED ON
10-25-19

21 12 22AC

1/16 COR

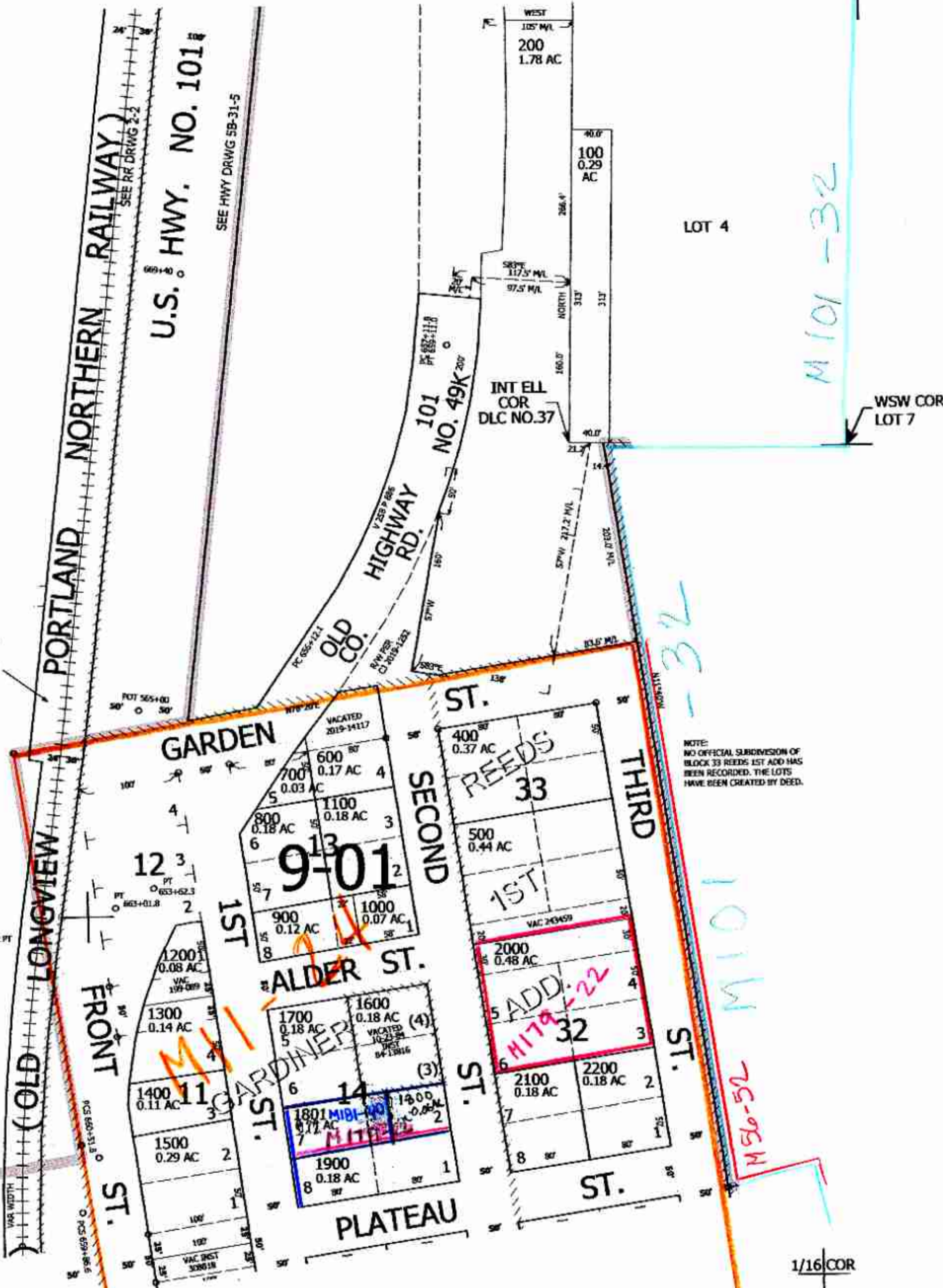
SEE MAP 21 12 22

1/16 COR

CANCELLED NO'S
2001 100M1 300M1
300

SEE MAP 21 12 22

TAX LOTTED
ON 21 12 22



LOT 4

M101-32

WSW COR
LOT 7

ENE COR
A C GIBBS
DLC NO. 37

NOTE:
NO OFFICIAL SUBDIVISION OF
BLOCK 33 REEDS 1ST ADD HAS
BEEN RECORDED. THE LOTS
HAVE BEEN CREATED BY DEED.

SEE MAP 21 12 22

774,000

CEN SEC

1/16 COR

SW COR
LOT 7
NW COR
LOT 8

SEE MAP 21 12 22DB

3,967,000

10/29/19
JC

21 12 22AC