

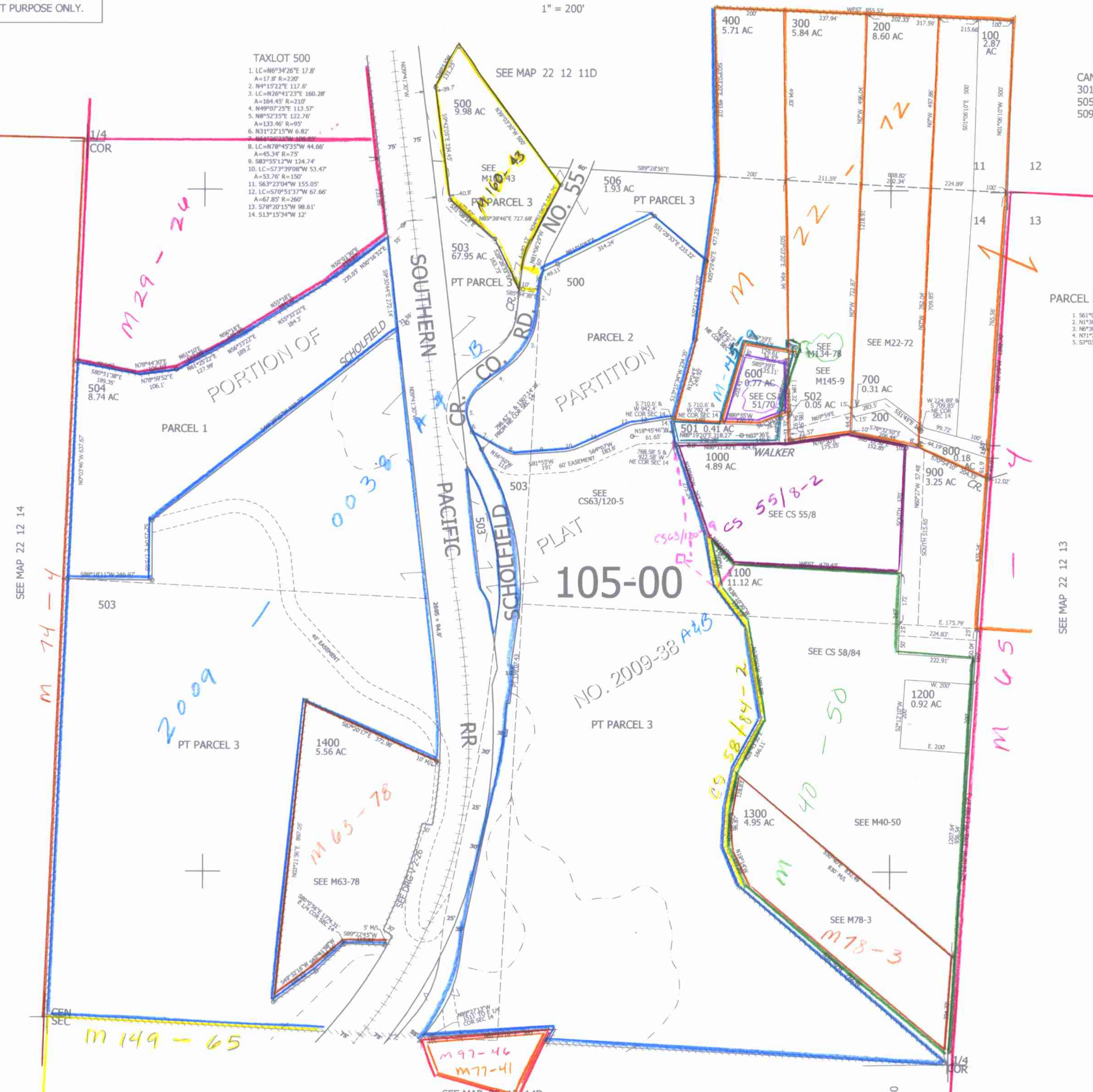
NE1/4 SEC.14 T.22S. R.12W. W.M.  
DOUGLAS COUNTY

REVISED ON  
3-29-10

22 12 14A

THIS MAP WAS PREPARED FOR  
ASSESSMENT PURPOSE ONLY.

1" = 200'



- TAXLOT 500
1. LC=N6°34'26"E 17.8'
  2. N4°15'22"E 117.6'
  3. LC=N26°41'23"E 160.28'
  4. N49°07'25"E 113.57'
  5. N8°52'35"E 122.76'
  6. N31°22'15"W 6.82'
  7. N2°22'25"E 108.85'
  8. LC=N78°45'35"W 44.66'
  9. A=17.8' R=220'
  9. S83°55'12"W 124.74'
  10. LC=S7°39'08"W 53.47'
  11. A=53.76' R=150'
  12. LC=S70°51'37"W 67.66'
  13. A=67.85' R=260'
  14. S78°20'15"W 98.61'
  15. S13°15'34"W 12'

CANCELLED NOS  
301 601 1500M1  
505 507 508  
509 510

PARCEL 300 & 600

1. S61°01'W 29.07'
2. N1°30'53"E 37.22'
3. N6°30'36"W 24.6'
4. N71°23'W 21.31'
5. S3°03'20"E 23.48'

105-00

M 74-4

M 29-24

2009

M 65-78

M 149-65

M 97-46  
M 77-41

M 58-84-2

M 40-50  
M 78-3

M 65

NO. 2009-38 A+B  
SEE CS 55/8

M 01/04/10

SEE MAP 22 12 14

SEE MAP 22 12 13

SEE MAP 22 12 14D

748,000

22 12 14A