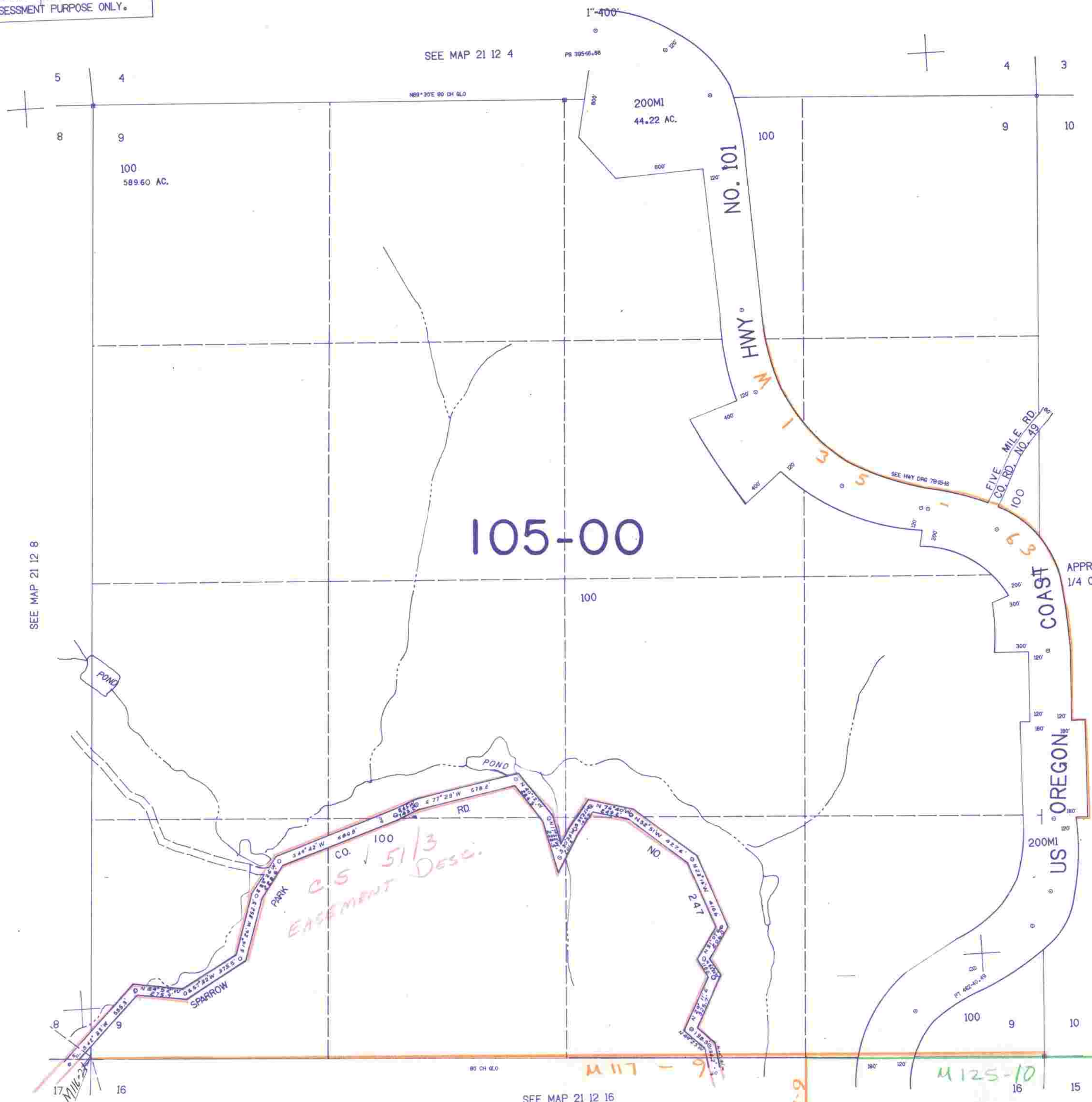


SECTION 9 T.21S. R.12W. W.M.
DOUGLAS COUNTY

21 12 9

THIS MAP WAS PREPARED FOR
ASSESSMENT PURPOSE ONLY.



SEE MAP 21 12 8

SEE MAP 21 12 10

ENE COR
S. SCHOLFIELD
DLC NO. 39

SEE MAP 21 12 16

21 12 9

782.000

1.043.000

12/18/97