

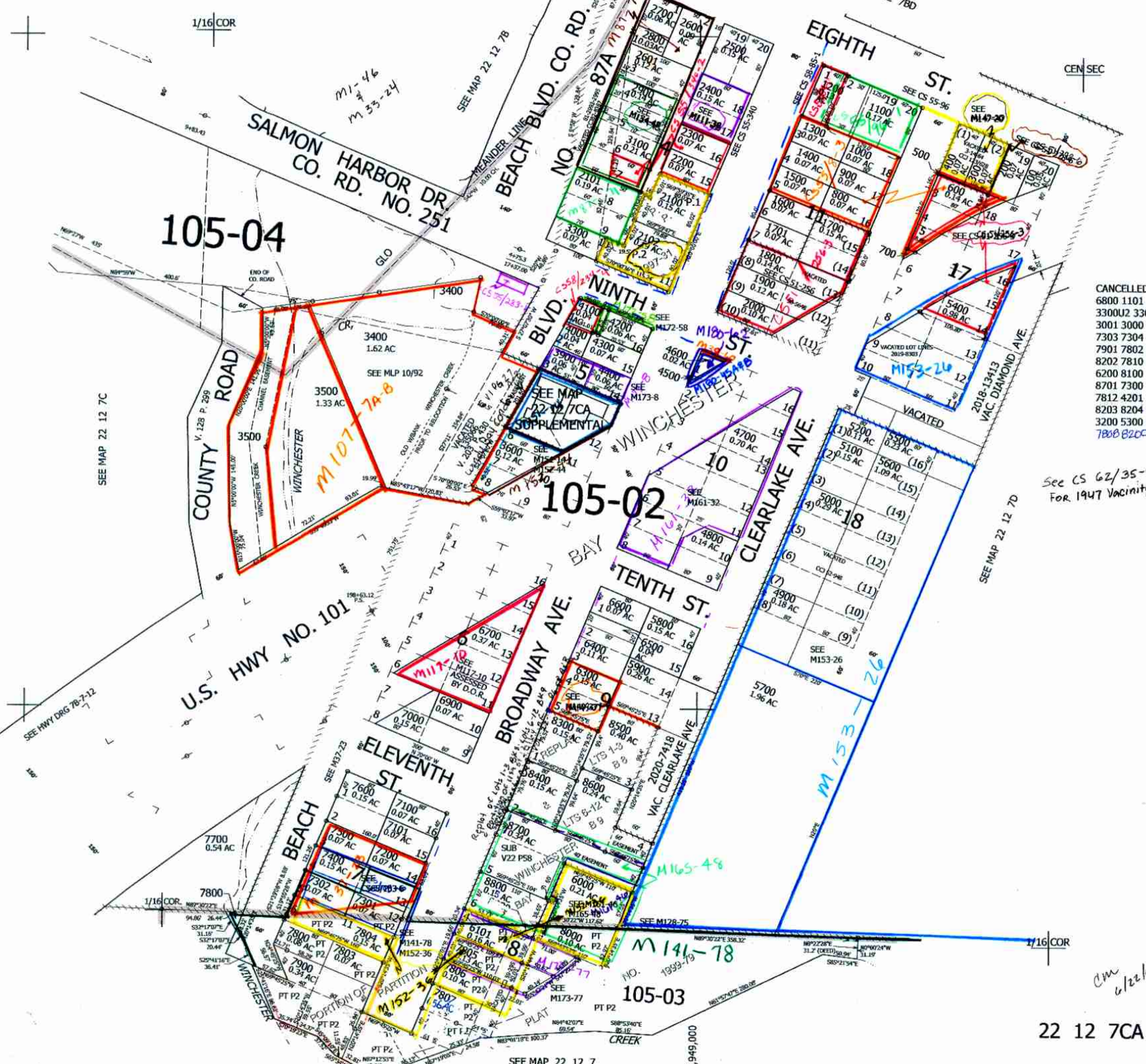
THIS MAP WAS PREPARED FOR ASSESSMENT PURPOSE ONLY.

NE1/4 SW1/4 SEC.7 T.22S. R.12W. W.M.
DOUGLAS COUNTY

1" = 100'

REVISED ON
7-23-20

22 12 7CA



- CANCELLED NOS
- 6800 1101 3300U1
- 3300U2 3300U3 3301
- 3001 3000 7809
- 7303 7304 3700
- 7901 7802 8201
- 8202 7810 6100
- 6200 8100 3800
- 8701 7300 7811
- 7812 4201 3901
- 8203 8204 7801
- 3200 5300 8900
- 7808 8200

See CS 62/35-4
For 1947 Vacinity map

752,500

cm
6/22/07
New

22 12 7CA