

THIS MAP WAS PREPARED FOR ASSESSMENT PURPOSE ONLY.

SECTION 35 T.21S. R.11W. W.M.

DOUGLAS COUNTY

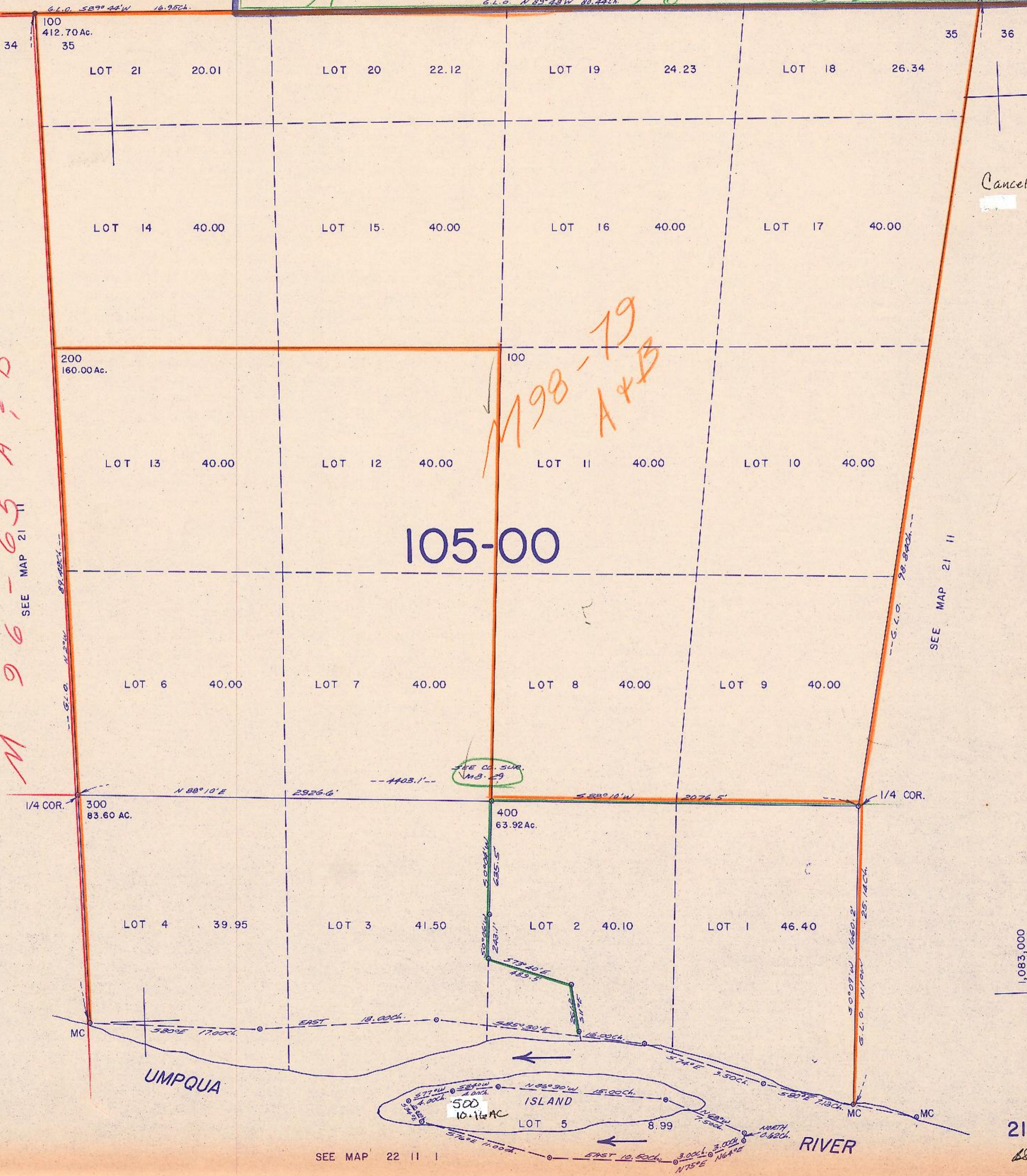
1" = 400'

21 11 35

SEE MAP 21 11 26

27

26



Cancelled N/S

M 96-65 A+B

M 98-19 A+B

105-00

1,083,000
759,000

21 11 35

68 3/83 R

SEE MAP 22 11 1