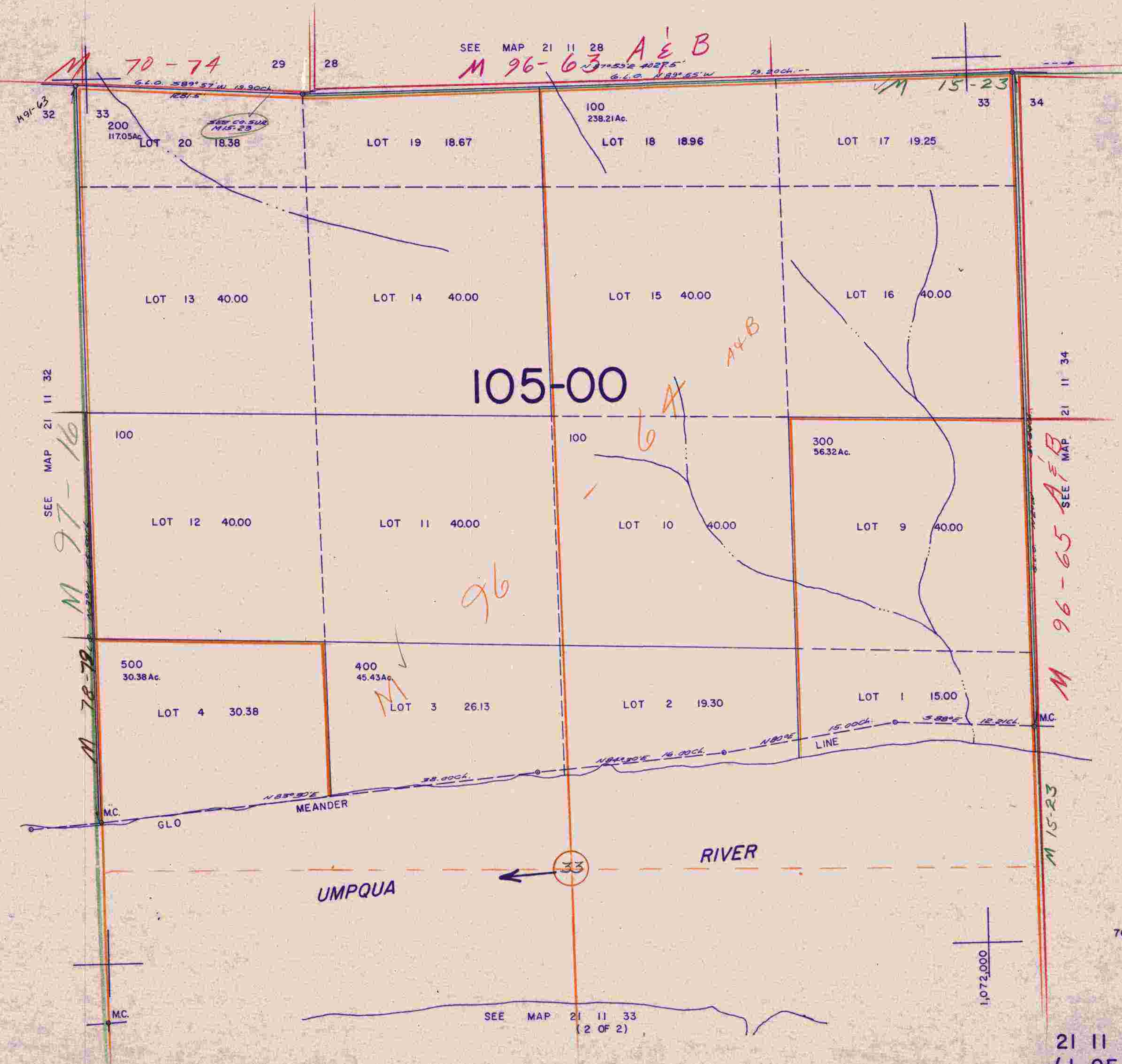


THIS MAP WAS PREPARED FOR ASSESSMENT PURPOSE ONLY.

SECTION 33 T21S R11W WM DOUGLAS COUNTY

1" = 400'

21 11 33 (1 OF 2)



SEE MAP 21 11 28 M 96-63 A & B

105-00

96

A & B

M 97-16

M 78-79

M 96-65 A & B

M 15-23

SEE MAP 21 11 33 (2 OF 2)

21 11 33 (1 OF 2)

8/3/02 R

THIS MAP WAS PREPARED FOR
ASSESSMENT PURPOSE ONLY.

SECTION 33 T.21S. R.11W. W.M.
DOUGLAS COUNTY
1" = 400'

21 11 33
(2 OF 2)

