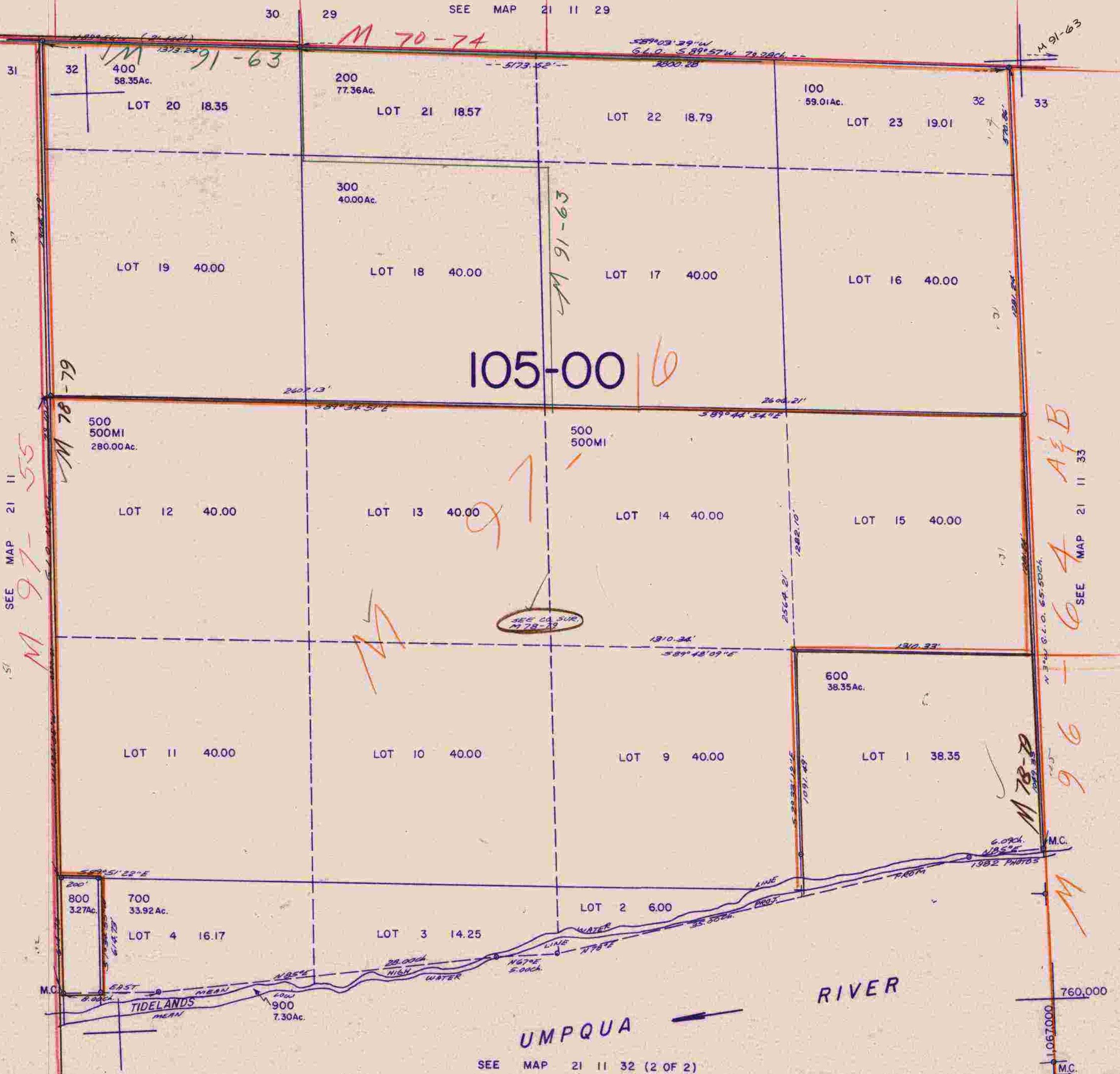


THIS MAP WAS PREPARED FOR
ASSESSMENT PUPOSE ONLY.

SECTION 32 T.21 S. R.11 W. W.M.
DOUGLAS COUNTY

1" = 400'

21 11 32
(1 OF 2)



SEE MAP 21 11 55
M 97-

M 76-79

M 70-74

M 91-63

M 91-63

105-00 | 6

M 97

A & B

SEE MAP 21 11 33
M 64

M 78-D

M 96

UMPQUA RIVER

SEE MAP 21 11 32 (2 OF 2)

21 11 32
(1 OF 2)

BB 3/83