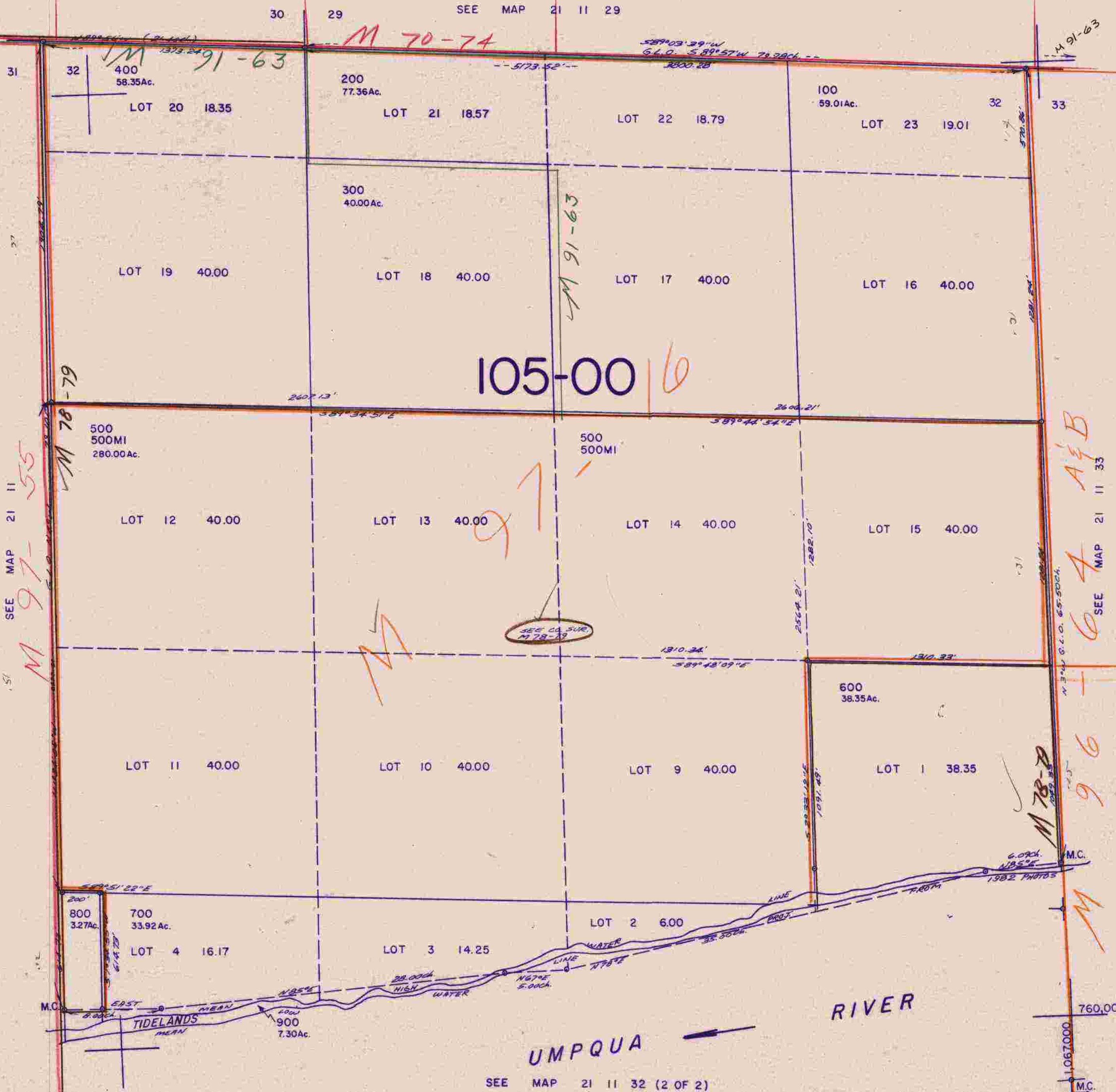


THIS MAP WAS PREPARED FOR ASSESSMENT PURPOSE ONLY.

SECTION 32 T.21 S. R.11 W. W.M.
DOUGLAS COUNTY

1" = 400'

21 11 32
(1 OF 2)



105-0016

97

M

A & B

64

96

M

SEE MAP 21 11 32 (2 OF 2)

21 11 32
(1 OF 2)

BB 3/83

