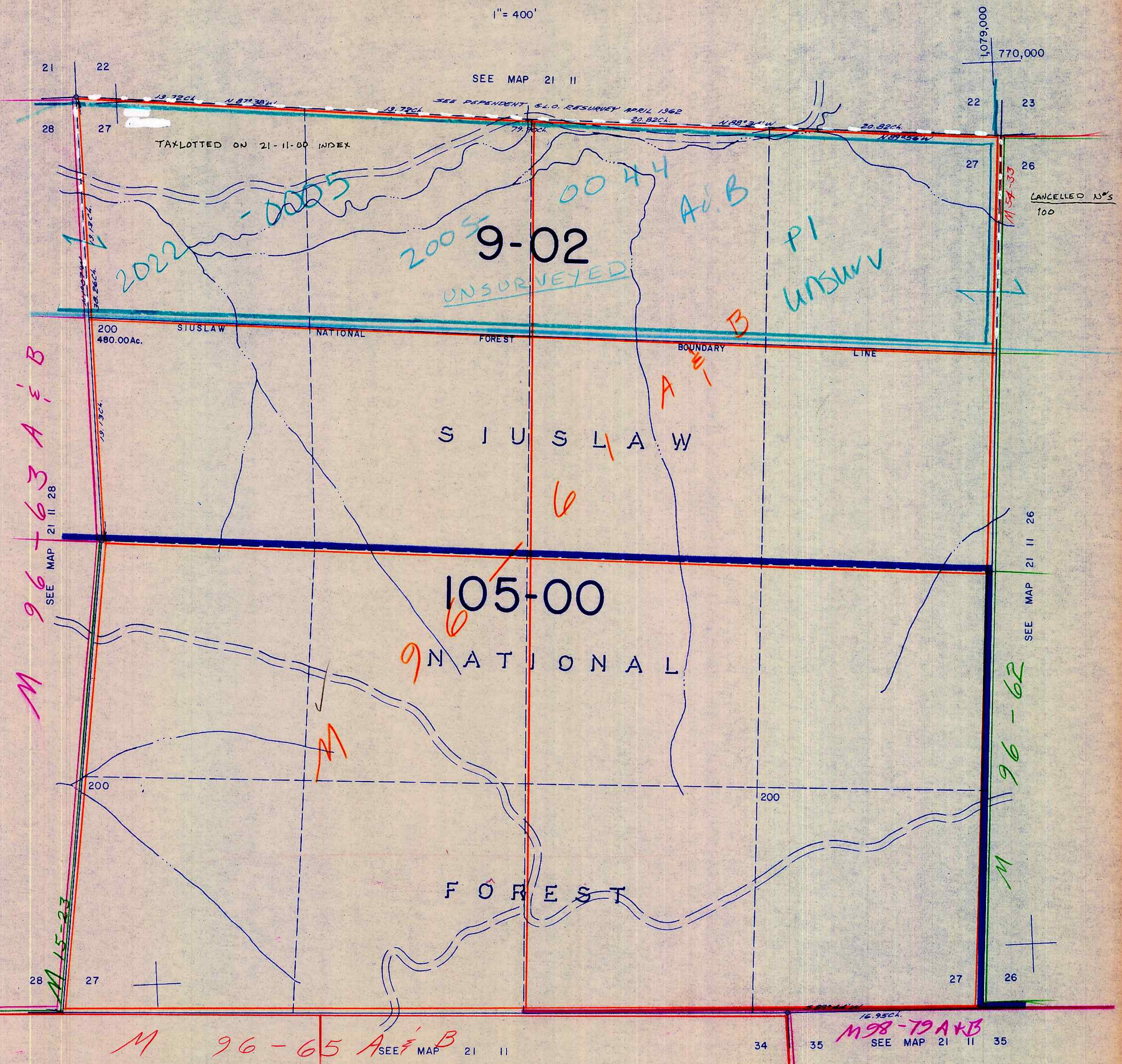


THIS MAP WAS PREPARED FOR ASSESSMENT PURPOSE ONLY.

SECTION 27 T.21S. R.11W. W.M.
DOUGLAS COUNTY

21 11 27

1" = 400'



CANCELLED N'S
100

M 96-63 A & B
SEE MAP 21 11 28

M 96-62
SEE MAP 21 11 26

M 96-65 A & B
SEE MAP 21 11

M 98-79 A & B
SEE MAP 21 11 35

21 11 27
Ed 3/83 R