

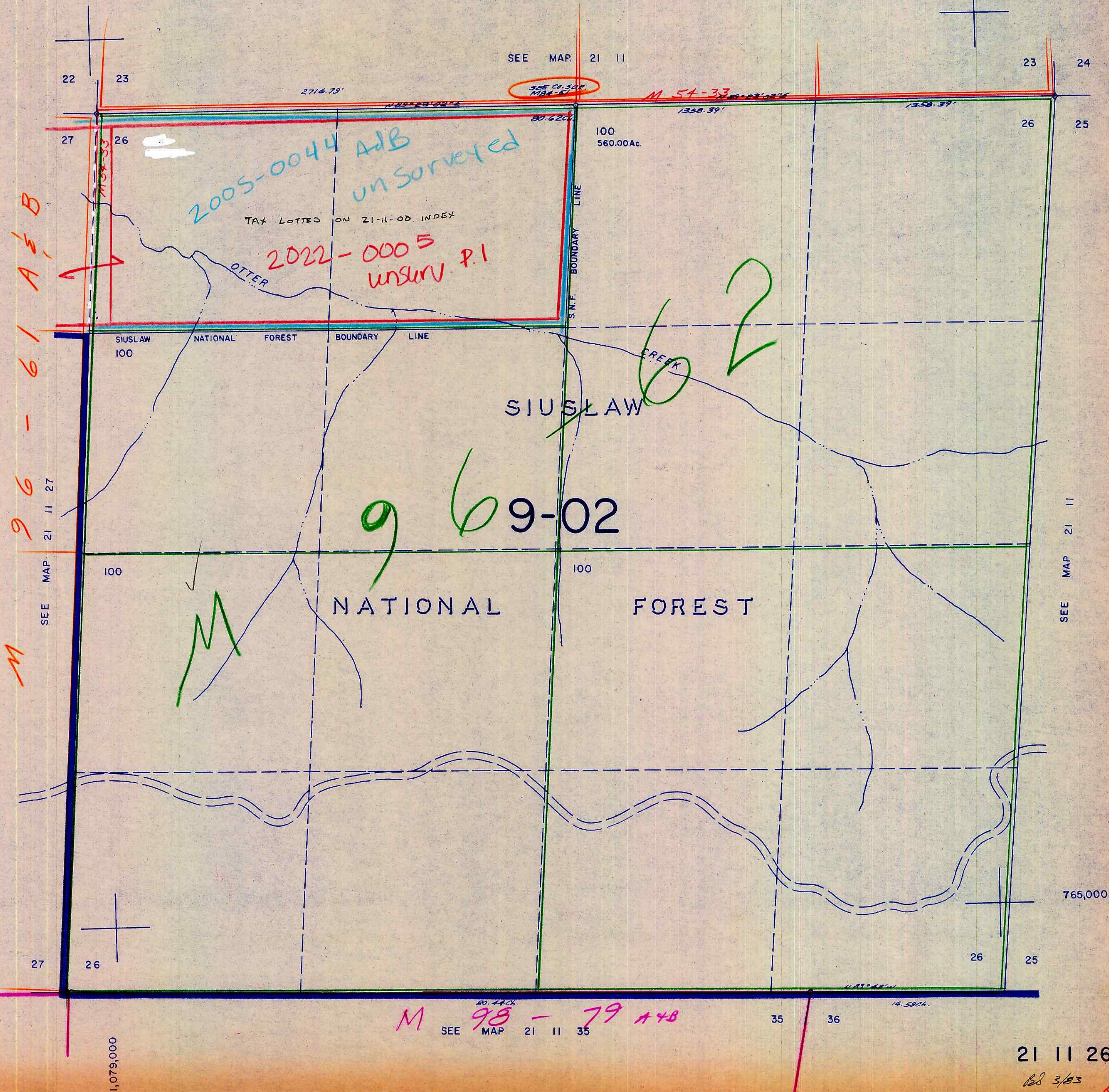
THIS MAP WAS PREPARED FOR
ASSESSMENT PURPOSE ONLY.

SECTION 26 T.21S. R.11W. W.M.
DOUGLAS COUNTY

1" = 400'

21 11 26

CANCELLED NO'S
200



34 35

M SEE 98-79 A+B
SEE MAP 21 11 35

21 11 26

BB 3/53