

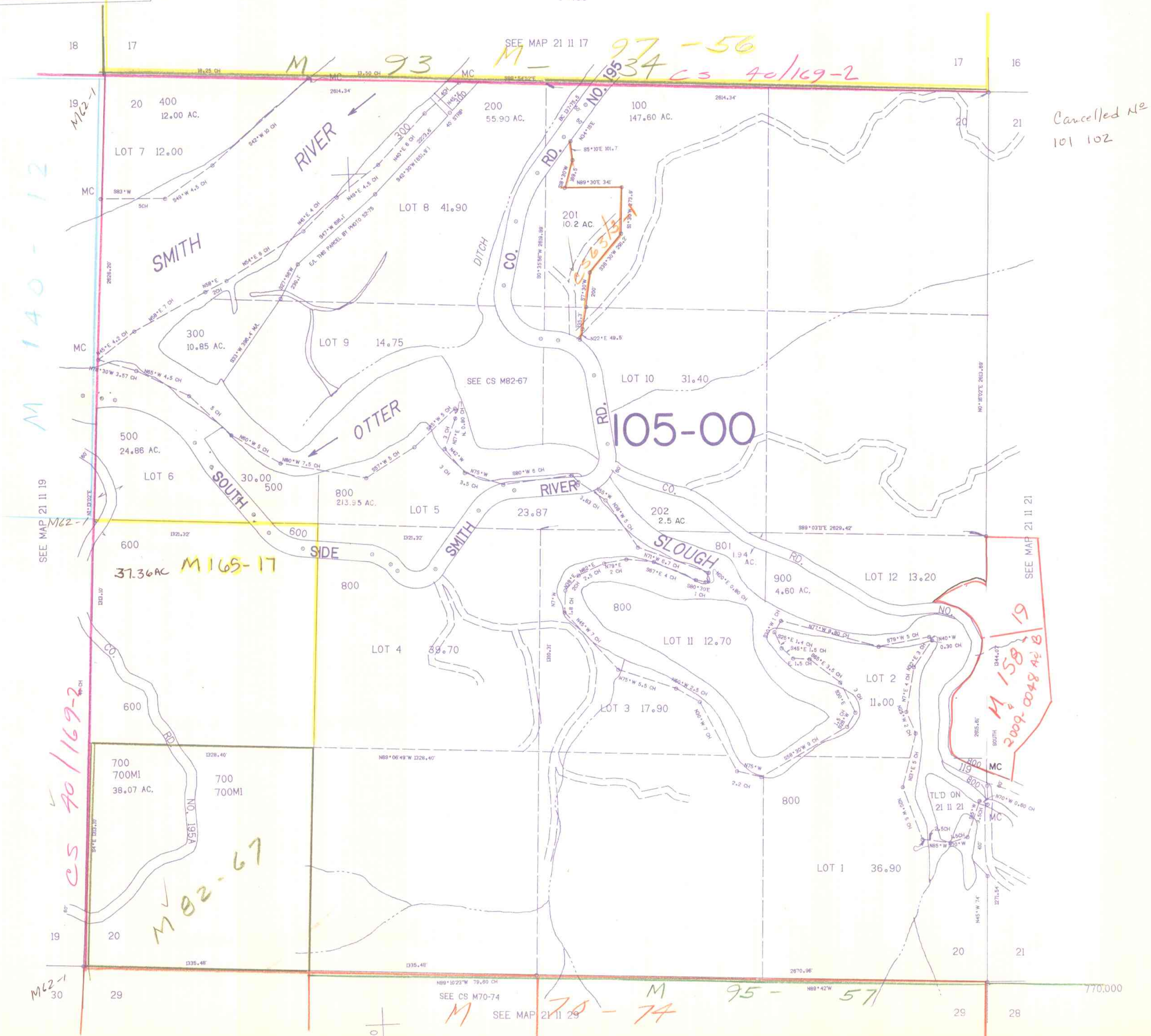
SECTION 20 T.21S. R.11W. W.M.  
DOUGLAS COUNTY

REVISED ON  
4-3-92

21 11 20

THIS MAP WAS PREPARED FOR  
ASSESSMENT PURPOSE ONLY.

1"=400'



Cancelled No  
101 102

M 158-19  
2009-0048 A2 B

M 140-12

CS 70/169-2

M 82-67

M 70-74

M 95-57

21 11 20

1/92 JH