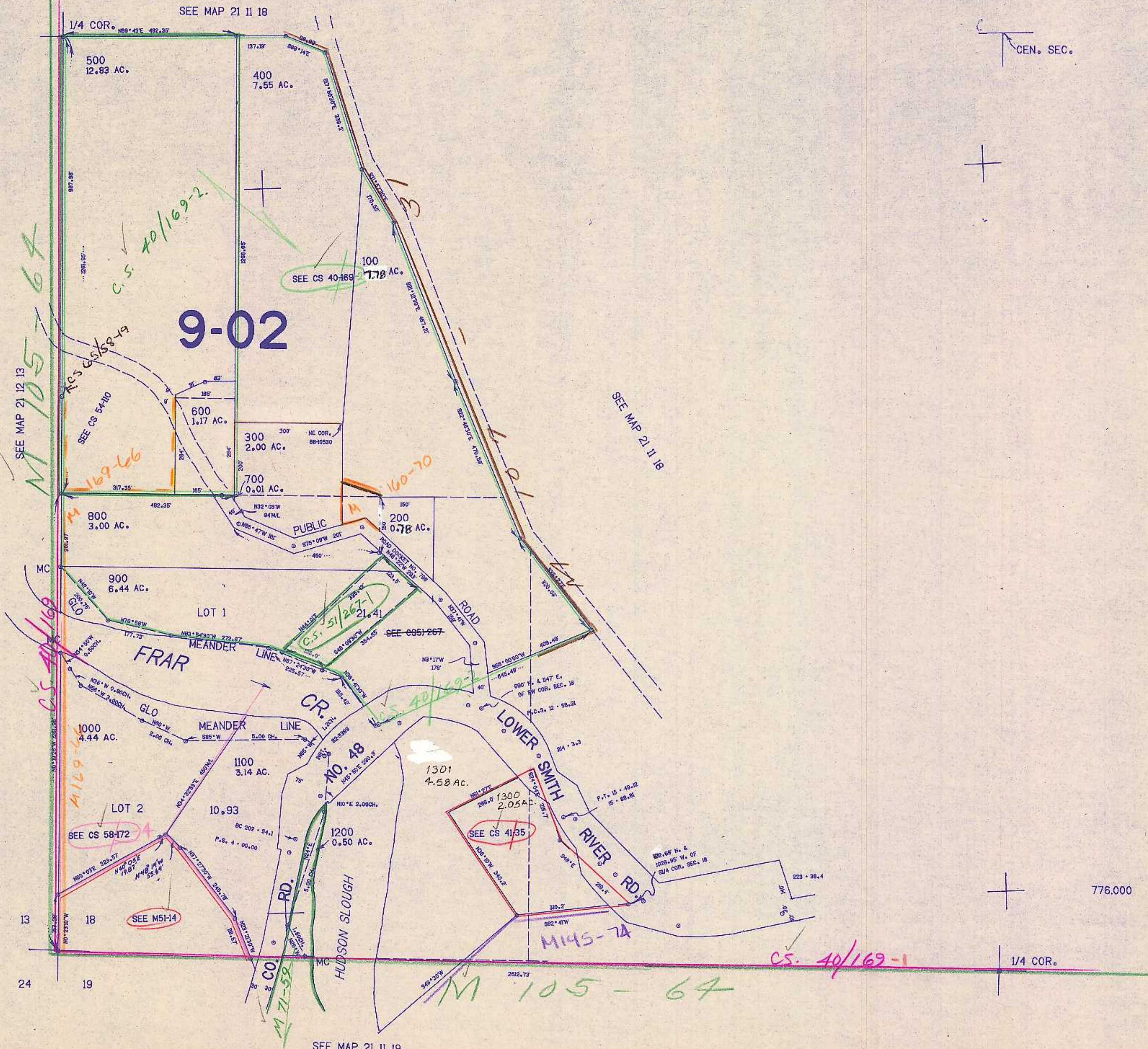


SW1/4 SEC. 18 T.21S. R.11W. W.M.
DOUGLAS COUNTY

21 11 18C

THIS MAP WAS PREPARED FOR
ASSESSMENT PURPOSE ONLY.

1"=200'



CEN. SEC.

776.000

1/4 COR.

SEE MAP 21 11 19

1061000

21 11 18C

88 3/83 R