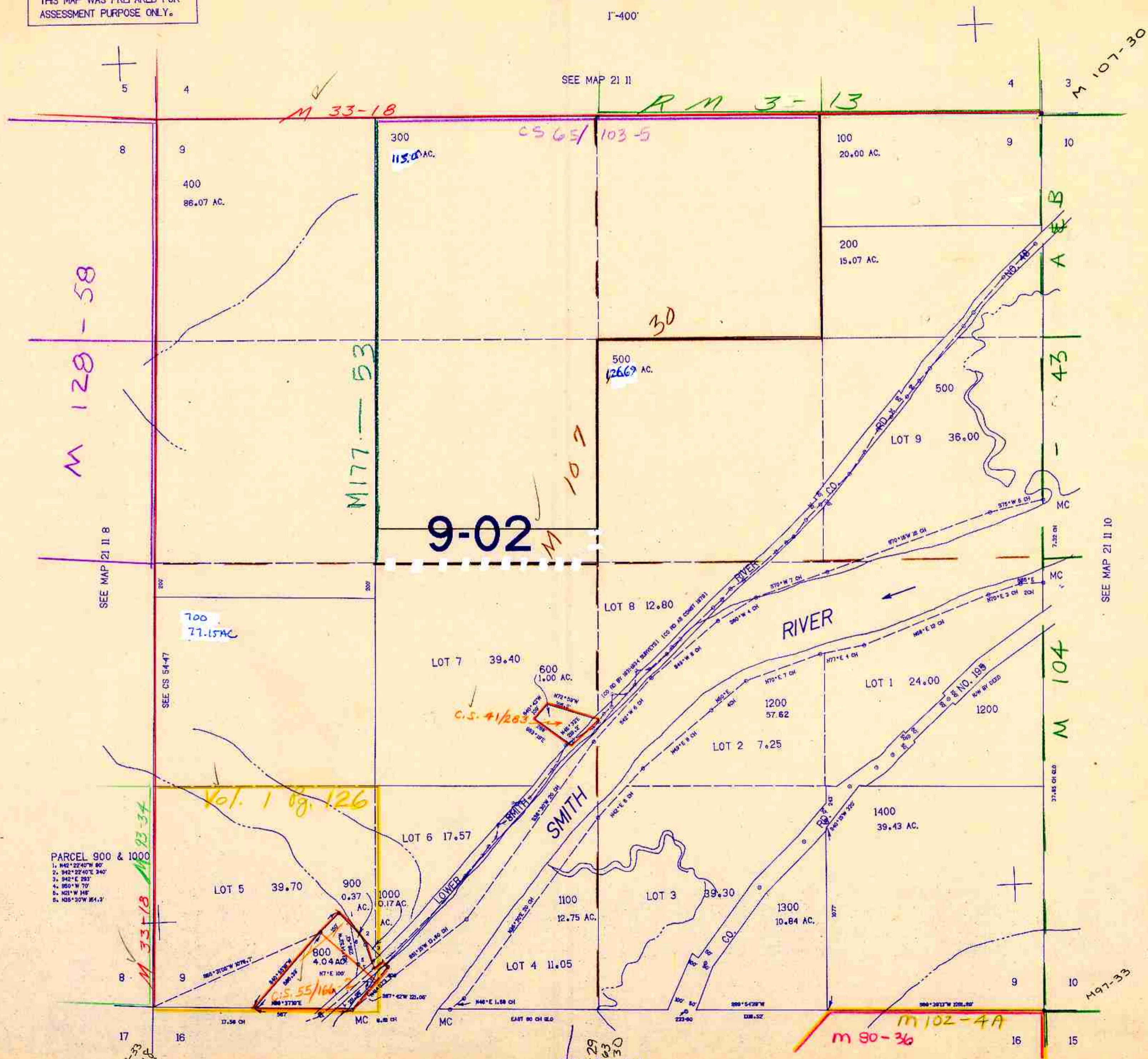


SECTION 9 T.21S. R.11W. W.M.
DOUGLAS COUNTY

21 11 9

THIS MAP WAS PREPARED FOR
ASSESSMENT PURPOSE ONLY.

1"=400'



PARCEL 900 & 1000
 1. N42°22'40"W 80'
 2. S42°22'40"E 240'
 3. S42°E 293'
 4. S85°1'W 70'
 5. N21°1'W 148'
 6. N25°30'W 84.2'

Vol. 1 pg. 126

C.S. 41/203

C.S. 55/166

M 97-33
 M 33-18
 M 15-63

SEE MAP 21 II 16
 M 106-29
 M 15-63
 M 101-30

M 102-4A
 M 80-36

21 11 9
 08 3/83 R