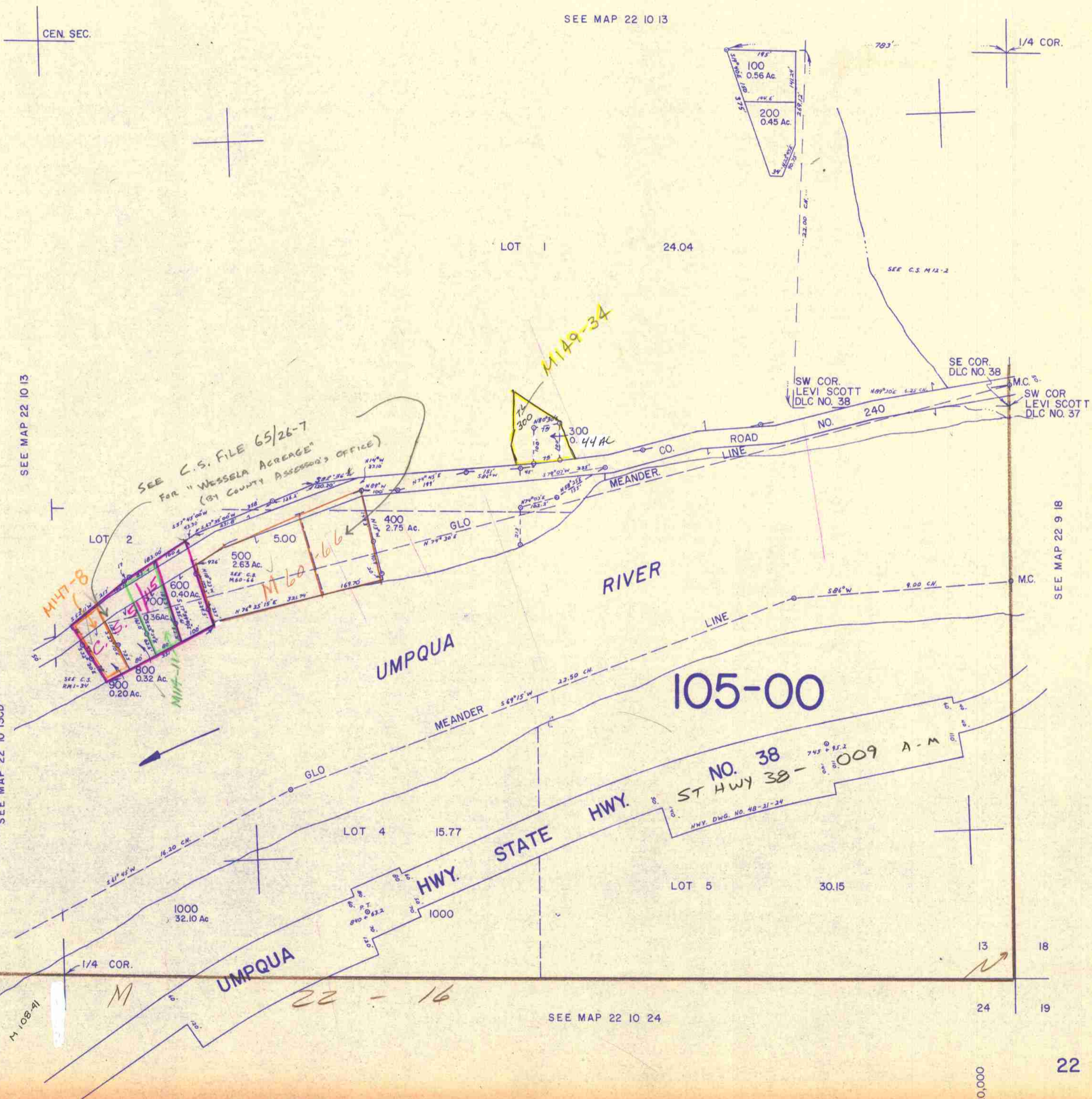


THIS MAP WAS PREPARED FOR  
ASSESSMENT PURPOSE ONLY.

SE 1/4 SEC. 13 T. 22S. R. 10W. W.M.  
DOUGLAS COUNTY

22 10 13D

1" = 200'



SEE MAP 22 10 13

SEE MAP 22 10 13

SEE MAP 22 10 13C

SEE MAP 22 9 18

SEE MAP 22 10 24

22 10 13D

741,000

120,000