

SECTION 9 T.21S. R.10W. W.M.  
DOUGLAS COUNTY

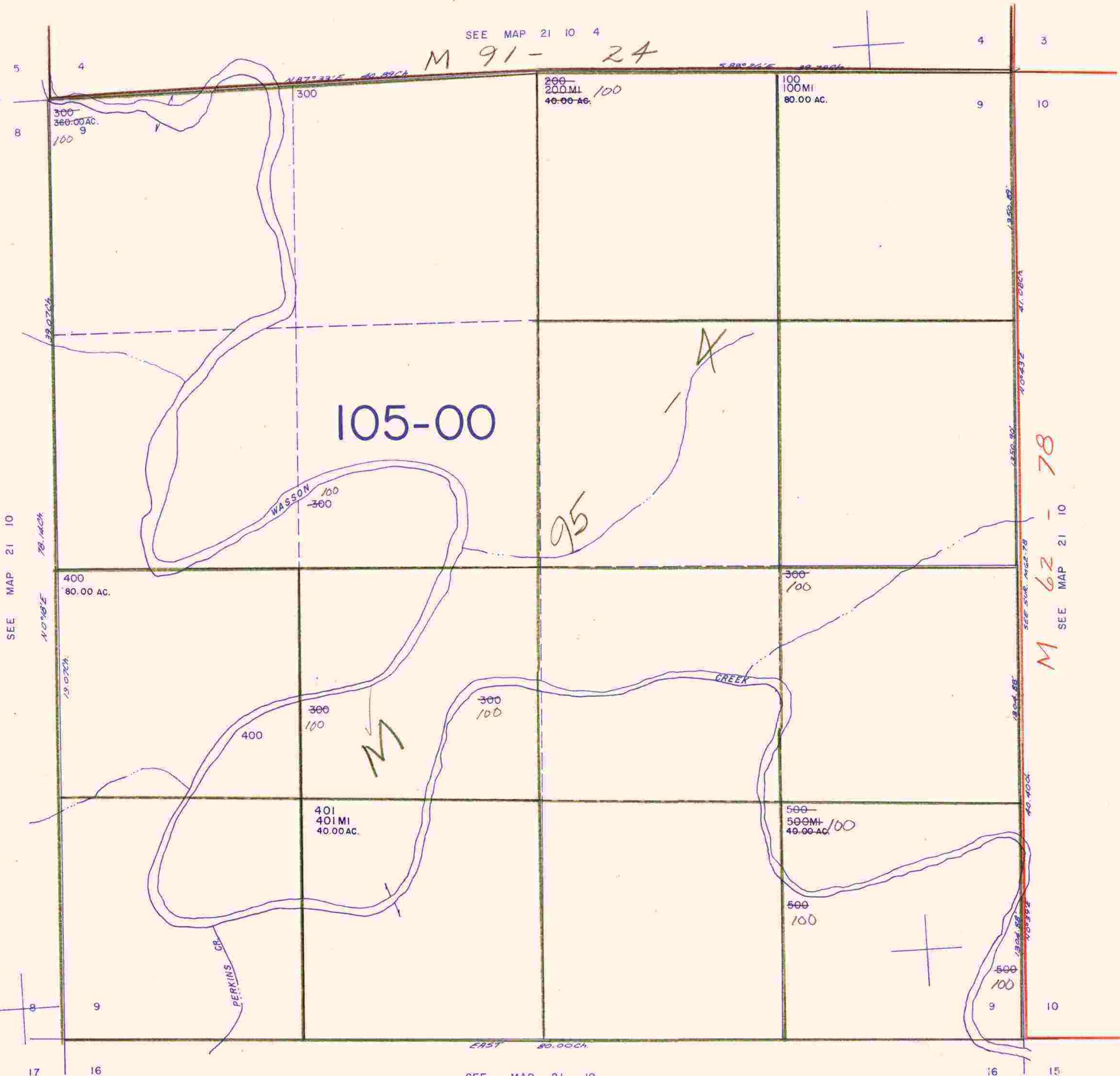
21 10 9

THIS MAP WAS PREPARED FOR  
ASSESSMENT PURPOSE ONLY.

1" = 400'

SEE MAP 21 10 4

M 91 - 24



SEE MAP 21 10

78.14 CH

N 0° 30' E

29.07 CH

400  
80.00 AC.

300  
360.00 AC.  
100  
9

105-00

WASSON  
100  
300

95

M

400  
100

300  
100

401  
40.00 MI  
40.00 AC.

500  
50.00 MI  
40.00 AC.

100

500  
100

500  
100

9

M 62 - 78

SEE MAP 21 10

EAST 80.00 CH

SEE MAP 21 10

779,000

1,105,000

21 10 9

12/89  
24