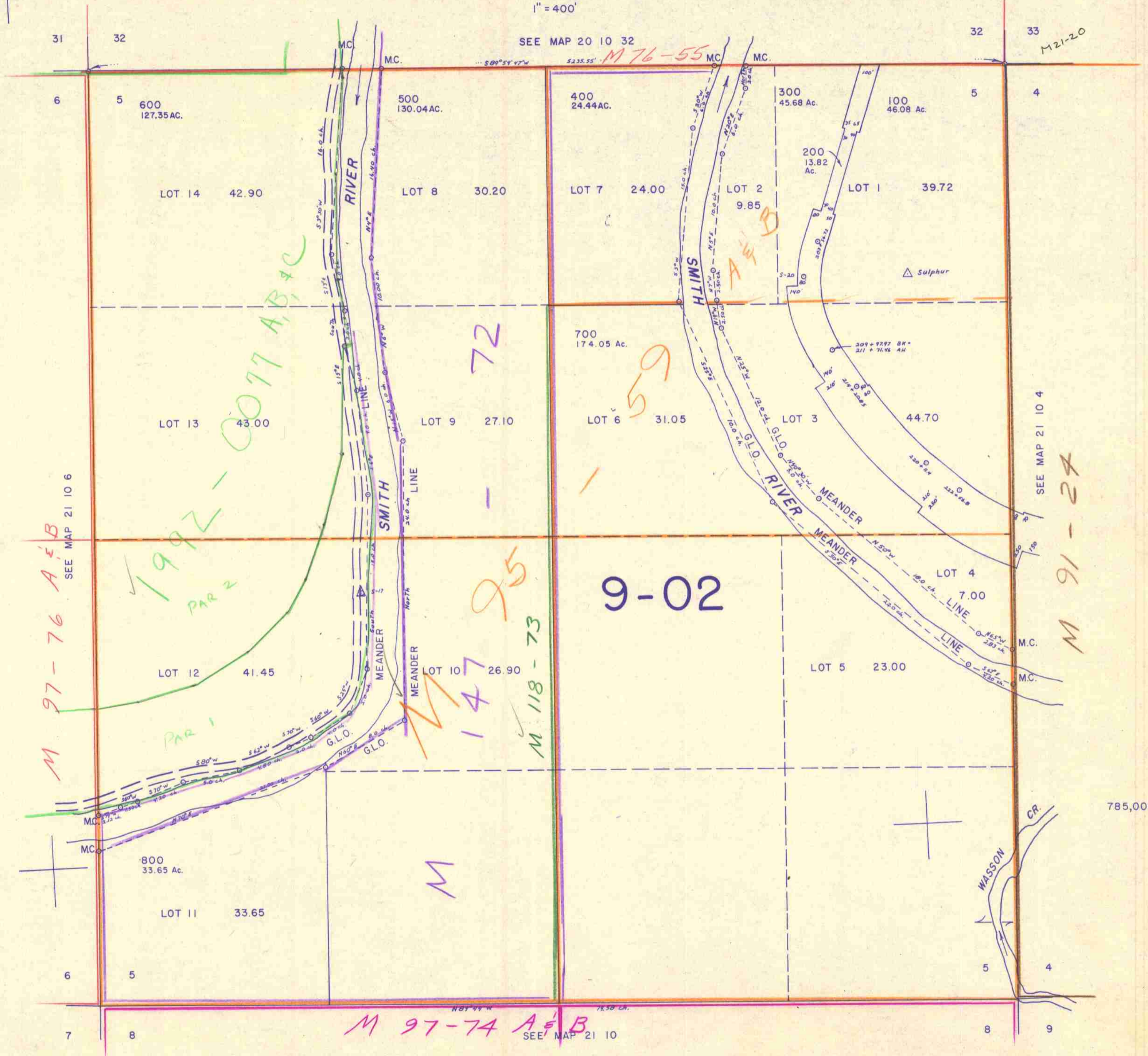


THIS MAP WAS PREPARED FOR ASSESSMENT PURPOSE ONLY.

SECTION 5 T.21S. R.10W. W.M. DOUGLAS COUNTY

21 10 5

1" = 400'



M 97-76 A & B
SEE MAP 21 10 6

1992-0077 A, B, C
PAR 2
PAR 1

72
95
147
M 118-73

9-02

SEE MAP 21 10 4
M 91-24

M 97-74 A & B
SEE MAP 21 10

1,100,000

21 10 5

3/63
JH