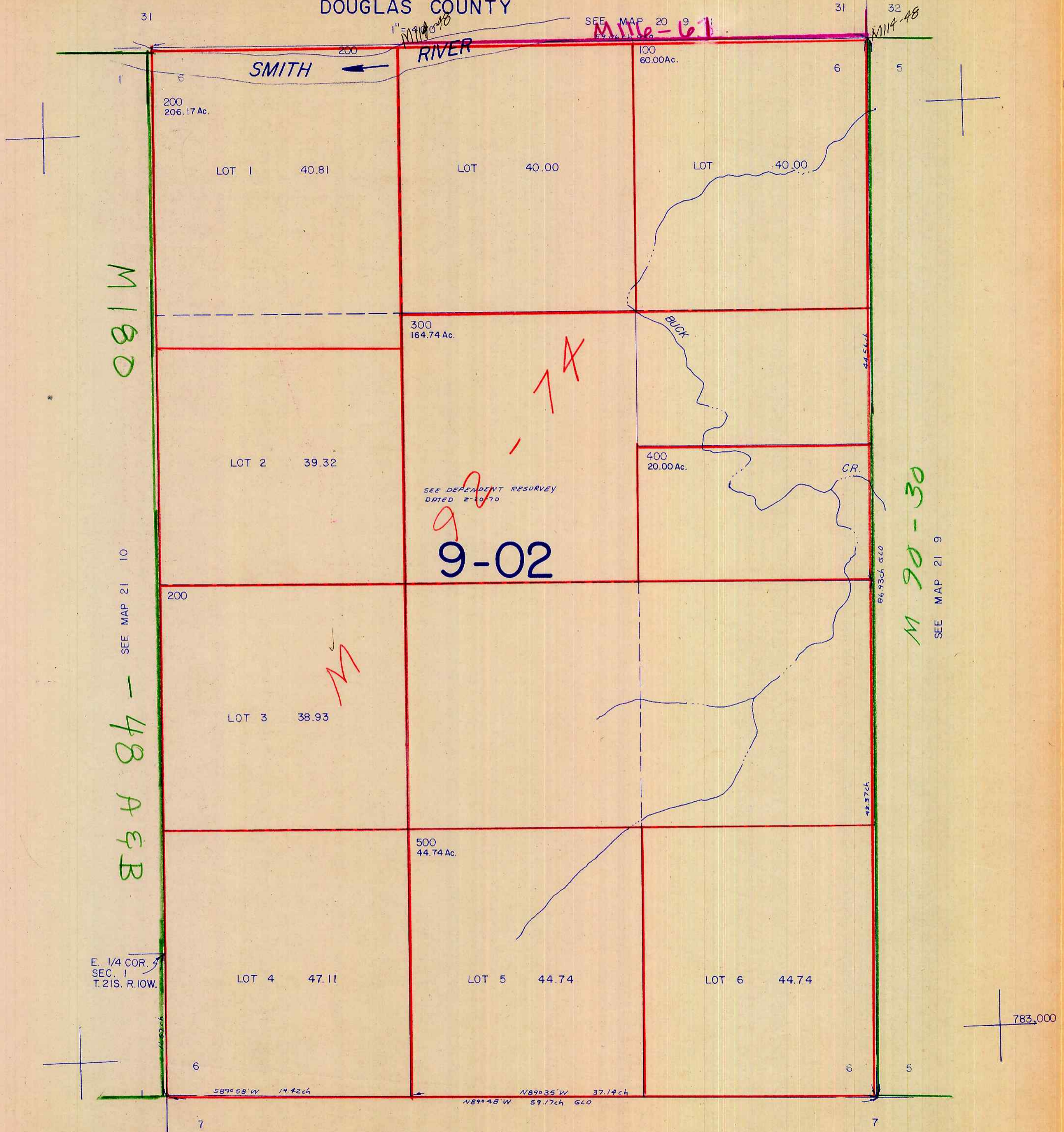


THIS MAP WAS PREPARED FOR ASSESSMENT PURPOSE ONLY.

SECTION 6 T.21S. R.9W. W.M.  
DOUGLAS COUNTY

21 9 6



M 180

M 90-30

9-02

SEE DEPENDENT RESURVEY  
DATED 2-10-70

1X

M

E. 1/4 COR.  
SEC. 1  
T.21S. R.10W.

SEE MAP 21 9

21 9 6

3/03/78

122,000